

# IBEA

Serie: dal n. 1001

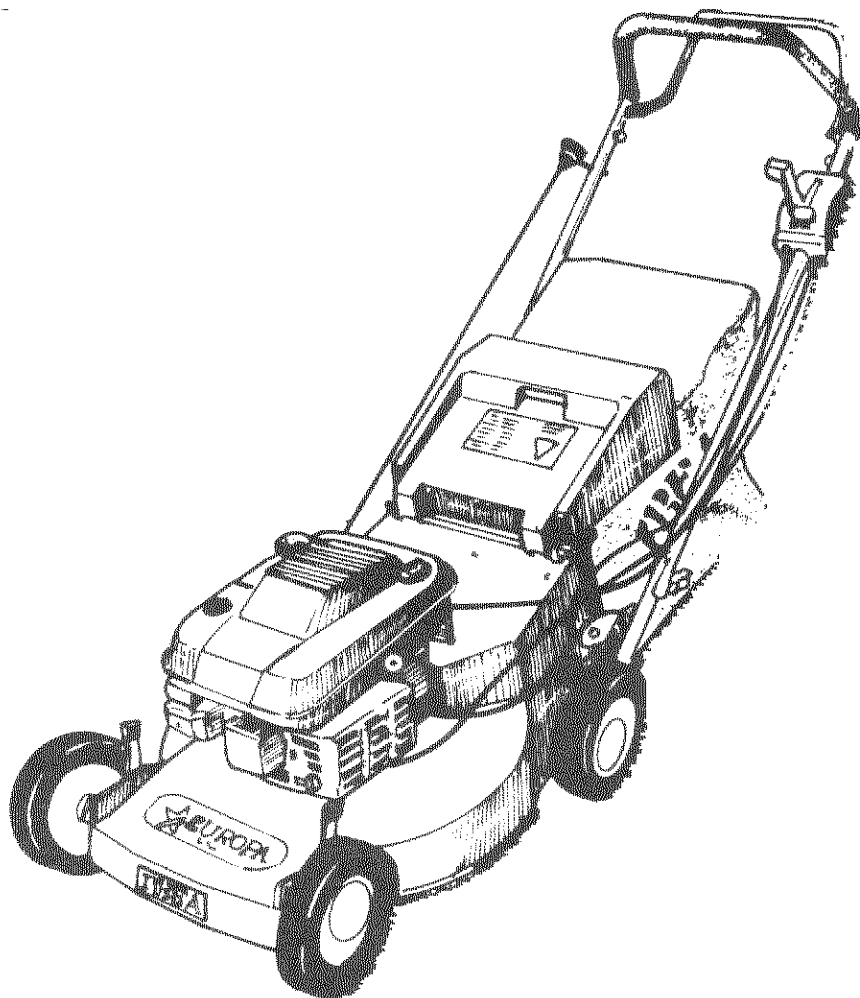
Stampato n. P5090106

LISTA RICAMBI

SPARE PART LIST

ERSATZTEILLISTE

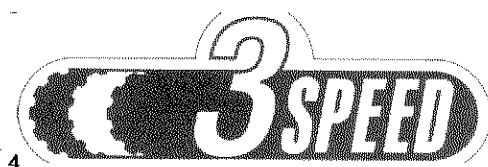
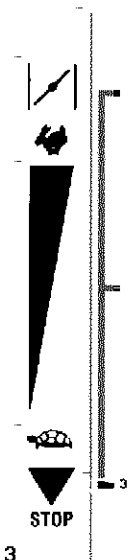
LISTE DES PIECES DE RECHANGE



**TOSAERBA**

**mod. EUROPA 530**

REF. N°	PART. N°	QTY	DESCRIZIONE	DESCRIPTION	DESCRIPTION	BESCHREIBUNG
1	P5140147		DECALCO	DECAL	MARQUAGE	AUFKLEBER
2	P5140148		DECALCO	DECAL	MARQUAGE	AUFKLEBER
3	P5140186		DECALCO	DECAL	MARQUAGE	AUFKLEBER
4	P5140202		DECALCO	DECAL	MARQUAGE	AUFKLEBER
5	P5140503		DECALCO	DECAL	MARQUAGE	AUFKLEBER
6	P5140109		DECALCO	DECAL	MARQUAGE	AUFKLEBER
7	P5140110		DECALCO	DECAL	MARQUAGE	AUFKLEBER
	P5090099		MANUALE EUROPA 530	OPERATOR'S MANUAL	MODE D'EMPLOI	BEDIENUNGSANLEITUNG
	P5110012		CHIAVI CANDELA	SPARK PLUG SPANNER	CLÉ POUR BOUGIE	KERZENSCHLUESSEL



**WARNING  
DANGER!**

Blade rotates when engine is running. Only use the mower with grass catcher in place or with safety chute door closed. Disconnect high tension wire from spark plug before performing any repairs or maintenance to the machine.

**ATTENZIONE  
PERICOLI**

La lama gira quando il motore è in moto. Usate il foderba soltanto con il sacco di raccolta montato oppure con il pannello di sicurezza chiuso. Prima di ogni riparazione o manutenzione staccate il cavo di accensione della candela.

**VORSICHT,  
GEFAHR!**

Rotierende Messer bei laufendem Motor! Benutzen Sie den Mäher nur mit montiertem Grassammel- oder geschlossener Schutzklappe. Vor Reparatur- oder Servicearbeiten am Mäher unbedingt Zündkabel von Zündkerze enternen!

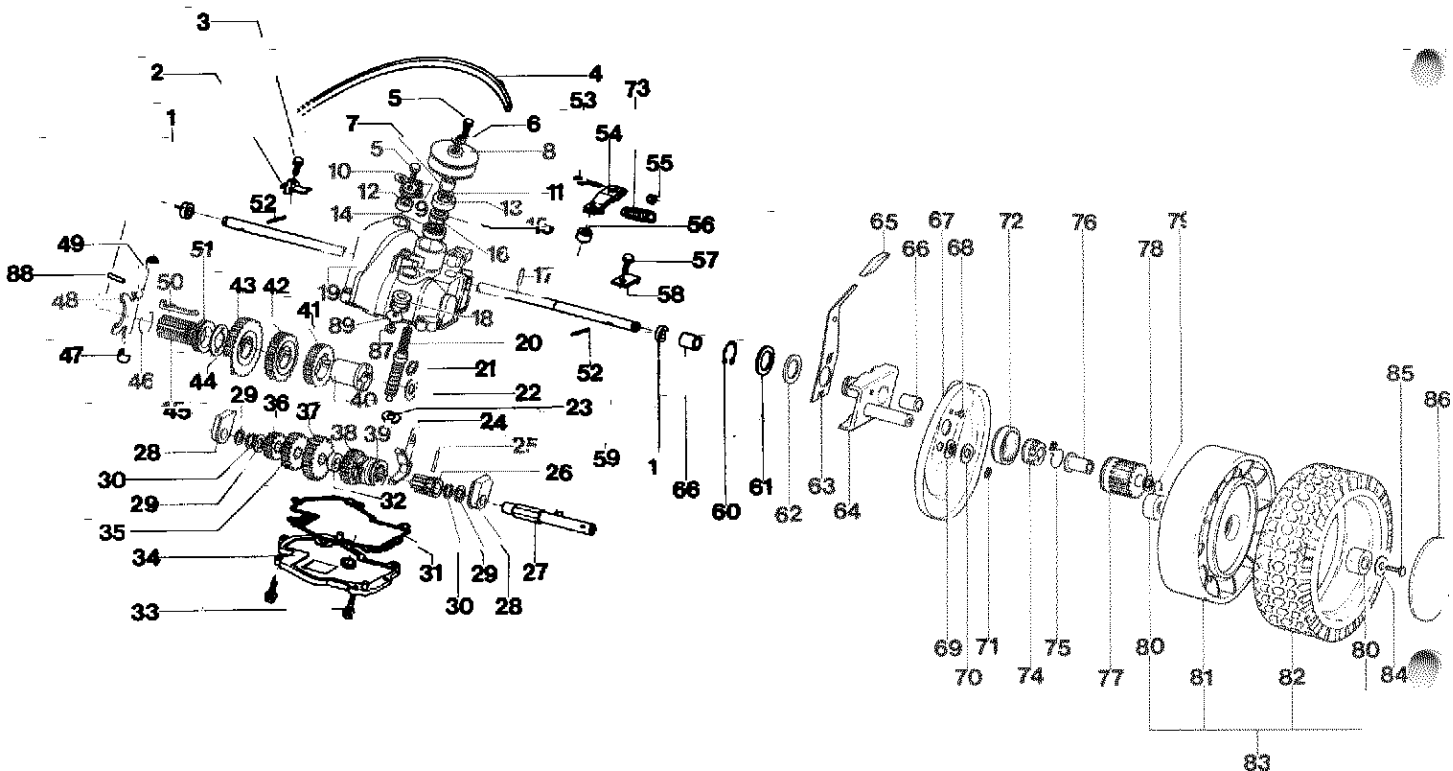
**ATTENTION  
DANGER!**

Couteaux en rotation lorsque le moteur marche! N'utilisez la tondeuse qu'avec le collecteur d'herbe monté ou avec le clapet de protection fermé. Avant de faire une réparation ou des travaux de service à la tondeuse, il faut absolument enlever le câble d'allumage de la bougie.



REF. N°	PART. N°	QTY	DESCRIZIONE	DESCRIPTION	DESCRIPTION	BESCHREIBUNG
2	P2020187	1	SCIVOLO ERBA	DEFLECTOR	DÉFLECTEUR	LEITBLECH
3	P00011098	1	TELAIO CESTELLO	BAG FRAME	MONTURE	GESTELL
4	P2020149	1	DEFLETTORE	SHIELD	PLAQUE DE PROTECTION	SCHUTZ
5	P3160042	1	SACCO	BAG	SAC	GRASFANGSACK
6	2020050A1	2	POMELLO	KNOB	POIGNÉE	MUTTER
7	P1050011	2	DADO M8 AUTOBLOC.	NUT	ECROU	MUTTER
8	PD1570098	2	STEGOLA INF. DX	RIGHT LOWER HANDLEBAR	GUIDON SUPERIEUR	HOLMUNTERTEIL R.
9	1010026A1	2	VITE M8X40	SCREW	VIS	SCHRAUBE
10	P1050011	2	DADO M8 AUTOBLOC.	NUT	ECROU	MUTTER
11	P1010082	2	VITE	SCREW	VIS	SCHRAUBE
12	P1010070	2	VITE	SCREW	VIS	SCHRAUBE
13	P1050011	3	DADO M8 AUTOBLOC.	ENGINE	MOTEUR	MOTOR
14	PD1570298	1	STEGOLA INF. SX	NUT	ECROU	MUTTER
15	P3020027	1	STEGOLA INF. SX	LEFT LOWER HANDLEBAR	GUIDON INF. GAUCHE	HOLMUNTERTEIL L.
16	P3140238	2	MOLLA PORTELLO	SPRING	RESSORT	FEDER
17	P2020203	2	DISTANZIALE	SPACER	DOUILLE	ABSTANDSSTUECK
18	P2020189	2	MT TUBO	STRIP	JOINT	DICHTUNG
19	P2020062	1	PORTELLO	SHIELD	PROTECTION	KLAPPE
20	1010018A1	2	COPRIMOZZO ANT. E P.	COVER	COUVERCLE	DECKEL
21	102007A1	2	VITE	SCREW	VIS	SCHRAUBE
22	P2020083	2	RONDELLA	WASHER	RONDELLE	SCHEIBE
23	P2020083	2	COPERTONE	TYRE	PNEU	REIFEN
24	P3030023	4	CUSCINETTO 6201 2RS	BEARING	PALIER	LAGER
25	P2020206	2	CERCHIO ANTERIORE	FRONT WHEEL HUB	JANTE ANT.	FELGE
26	P2020128	2	COPRIRUOTA ANTERIORE	WHEEL COVER	PROTECTION	ABDECKUNG
27	P00015198	2	RUOTA ANTERIORE	WHEEL ASS. Y	ROUE COMPL.	RAD KOMPL.
28	P2020088	2	DISTANZIALE	SPACER	DOUILLE	SCHEIBE
29	P1020050	2	RONDELLA	SPRING WASHER	RONDELLE ÉLASTIQUE	FEDERSCHEIBE
30	PD1141098	2	PORTA RUOTA ANT.	FRONT WHEEL SUPPORT	SUPPORT ROUE ANT.	RADHALTER
31	P1010116	2	VITE	SCREW	VIS	SCHRAUBE
32	P3040118	2	BUSSOLA	BUSHING	DOUILLE	BUECHSE
33	P4020038	1	LEVA ANTERIORE DESTRA	RIGHT WHEEL LEVER	LEVIER ROUE DROITE	RADHEBEL R.
34	P4020039	1	LEVA ANTERIORE SINISTRA	LEFT WHEEL LEVER	LEVIER ROUE GAUCHE	RADHEBEL L.
35	P3040118	2	BUSSOLA	BUSHING	DOUILLE	BUECHSE
36	P2020077	2	POMELLO LEVA	KNOB	POIGNÉE	ABDECKUNG
37	P1010079	2	VITE GODRONATA	SCREW	VIS	SCHRAUBE
38	P1010085	2	VITE TRUCIOLARE	SCREW	VIS	SCHRAUBE
39	5040001A1	1	FASCETTA	CLAMP	CLAMP	RAPBAND
40	P2020087	2	COLLARE FERMACAVO	RING	BAGUE	RING
41	P1080018	2	PERNO PER PORTELLO	PIN	GOUILLE	STIFT
42	PD2020498	1	COPRICINGHIA	BELT COVER	PROTECTION	KEILRIEMEN
43	P106004	2	FISSATORE	STARLOCK	STARLOCK	STARLOCK
44	PD2005098	1	SCOCCA GRIGIA	DECK	CHASSIS	GEHAEUSE
45	1020014A1	3	RONDELLA	WASHER	RONDELLE	SCHEIBE
46	P1010097	2	VITE	SCREW 8x75	VIS 8x75	SCHRAUBE 8x75
47	P1010166	1	VITE	SCREW 8x110	VIS 8x110	SCHRAUBE 8x110
48	P1050012	2	DADO	NUT	ECROU	MUTTER
49	P109003	1	CHIAVETTA MOTORE	KEY 4,8	CLAVETTE 4,8	SCHIEBENFENDER 4,8
50	1090001A1	1	CHIAVE WOODRUFF	KEY	CLAVETTE	SCHIEBENFENDER
51	P3040101	1	BUSSOLA LAMA Ø 25	BLADE BUSHING Ø 25	DOUILLE DE COUTEAU Ø 25	MESSERBUECHSE Ø 25
52	P3040102	1	BUSSOLA LAMA Ø 22,2	BLADE BUSHING Ø 22,2	DOUILLE DE COUTEAU Ø 22,2	MESSERBUECHSE Ø 25
53	P4050028	1	LAMA	BLADE	COUTEAU	MESSER
54	1110002A1	1	MOLLA A TAZZA	SPRING	RESSORT	FEDER
55	P1020067	1	RONDELLA	WASHER	RONDELLE	SCHEIBE
56	P1010050	1	VITE LAMA	BLADE SCREW	VIS DE COUTEAU	MESSERSCHRAUBE
57	PD1032298	1	TRAVERSINO	CHASSIS RIB.	REINFORCEMENT	VERSTEIFUNG
58	1010024A1	4	VITE	SCREW	VIS	SCHRAUBE
59	P00010098	1	CESTELLO COMPLETO	GRASS BAG COMPL.	SAC DE RAMASSAGE COMP.	GRASFANGSACK KOMPL.

Vista assale posteriore e cambio 3 marce  
 Rear axle and gear box 3-speed  
 Essieu arrière et transmission 3 vitesses  
 Hinterachse und fahrgetriebe 3-gang



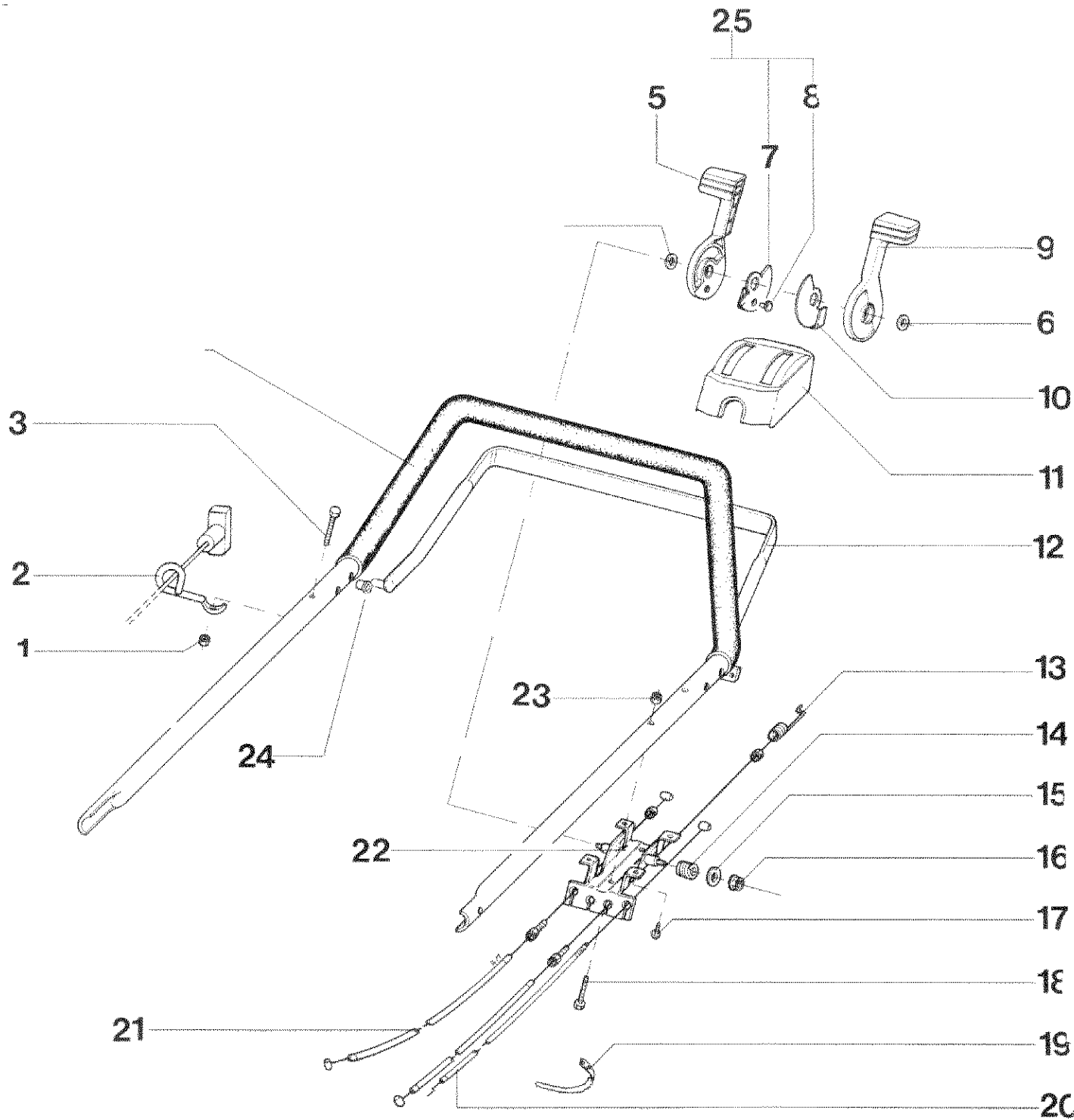
REF. N°	PART N°	QTY	DESCRIZIONE	DESCRIPTION	DESCRIPTION	BESCHREIBUNG
1	P3170011	2	ANELLO DI TENUTA	OIL SEAL	JOINT D'ARBRE	WELLENDICHRING
2	P4010124	1	COP. FISSA CAVO TRAZ.	COVER	COUVERCLE	FEDERHALTER
3	1010018A1		VITE	SCREW	VIS	SCHRAUBE
4	P3010025		CINGHIA TEM 860	TRANSMISSION BELT	COURROIRE DE TRANSM.	RIEMEN
5	1010018A1	2	VITE	SCREW	VIS	SCHRAUBE
6	1020007A1	1	RONDELLA	WASHER	RONDELLE	SCHEIBE
7	P3040049	1	BUSSOLA DISTANZIALE	BUSHING	DOUILLE	BUECHSE
8	P3040214		PULEGGIA	PULLEY	POULIE	RIEMENSCHLEIBE
9	P2020162		LEVA SELETTORE MARCE	LEVER	LEVIER	HEBEL
10	1020007A1		RONDELLA	WASHER	RONDELLE	SCHEIBE
11	P3170013		OR	SPACER	DOUILLE	ABSTANDSSTUECK
12	P3170011		ANELLO DI TENUTA	OIL SEAL	JOINT D'ARBRE	WELLENDICHRING
13	P3170010		ANELLO DI TENUTA	OIL SEAL	JOINT D'ARBRE	WELLENDICHRING
14	P3030010		CUSCINETTO	BEARING	PALIER	LAGER
15	P1020079		RASAMENTO	SPACER	DOUILLE	ABSTANDSSTUECK
16	P1070004		SEEGER	CIRCLIP	SEEGER	SEEGER
17	P1080015		SPINA	PIN	GOUILLE	STIFT
18	P2040010		GOMMINO ANTIVIBR.	RUBBER TUBE	TUBE DE PROTECTION	SCHUTZHUELLE
19	P00039219		SCATOLA CAMBIO	GEARBOX	BOITE DE VITESSE	GETRIEBE
20	P3040209		VITE SENZA FINE	WORM GEAR	VIS SANS FIN	SCHNECKE
21	1070001A1		SEEGER	CIRCLIP	SEEGER	SEEGER
22	P1020079		RASAMENTO	SPACER	DOUILLE	ABSTANDSSTUECK
23	P1020053		RONDELLA	SPACER	DOUILLE	ABSTANDSSTUECK
24	P3040041		FORCELLA INNESTO	FORK	FOURCHE	GABEL
25	P1080013	1	SPINA ELASTICA	PIN	GOUILLE	STIFT
26	P00065452	1	BUSSOLA GUIDA	BUSHING	DOUILLE	BUECHSE
27	P3040205	1	ALBERO SECONDARIO	SHAFT	ARBRE	WELLE
28	P3050036	2	SUPP. PER ALBERO SEC.	SUPPORT	SUPPORT	HALTER
29	1020020A1	2	RONDELLA	WASHER	RONDELLE	SCHEIBE
30	1070001A1	2	SEEGER	CIRCLIP	SEEGER	SEEGER
31	P3170015	1	GUARNIZIONE	GASKET	JOINT	DICHTUNG
32	P3040206	1	DISTANZIALE	SPACER	DOUILLE	DISTANZBUECHSE
33	P1010155	6	V.T.E.	SCREW	VIS	SCHRAUBE
34	P00039419	1	COPERCHIO CAMBIO	COVER	PROTECTION	ABDECKUNG
35	P3050041	1	INGRANAGGIO	GEAR	ENGRANAGE	STIRNRAD
36	P3050040	1	INGRANAGGIO	GEAR	ENGRANAGE	STIRNRAD
37	P3050042	1	INGRANAGGIO	GEAR	ENGRANAGE	STIRNRAD
38	P00038120	1	RUOTA DENT.	WHEEL	ROUE	ZAHNRAD
39	P00038099	1	INNESTO	SELECTOR COLLAR	MANCHON	SCHALTBUECHSE
40	P3050038	1	BUSSOLA SCANALATA	BUSHING	DOUILLE	BUECHSE
41	P3050045	1	INGRANAGGIO	GEAR	ENGRANAGE	STIRNRAD
42	P3050044	1	INGRANAGGIO	GEAR	ENGRANAGE	STIRNRAD
43	P3050043	1	INGRANAGGIO	GEAR	ENGRANAGE	STIRNRAD
44	P4010121	1	DISCHETTO TEMPRATO	TEMPERED RING	BAGUE EN ACIER	RING GEHAERTET
45	P2020161	1	BUSS. GUIDA-LINGUETTA	BUSHING	DOUILLE	BUECHSE
46	P3020024		ANELLO DI MOLLA	CIRCLIP	SEEGER	SEEGER
47	P3050046		GUIDA LEVA INFERIORE	LOWER LEVER GUIDE	GUIDE INFERIEUR DE LEVIER	UNTERE FUEHRUNG
48	P4010122		LEVA SPINGI LINGUETTA	THRUST LEVER	LEVIER DE BUTEE	ANLAUFHEBEL
49	P3040216		GUIDA LEVA SUPERIORE	UPPER LEVER GUIDE	GUIDE SUPERIEUR DE LEVIER	OBERE FUEHRUNG
50	P3050039	1	LINGUETTA SELETRICE	SELECTOR TAB	PATTE DE SELECTEUR	SCHALTFINGER
51	P3040204	1	ANELLO SPINGILINGUETTA	THRUST RING	BAGUE DE BUTEE	ANLAUFRING
52	P1080004	2	SPINA	PIN	GOUILLE	STIFT
53	P1010157	1	V.T.E.	SCREW	VIS	SCHRAUBE
54	P4010123	1	LEVA DI TRAZIONE	TRACTION LEVER	LEVIER DE TRACTION	HEBEL
55	1050002A1	1	DADO	NUT	ECROU	MUTTER
56	P3170012		ANELLO DI TENUTA	OIL SEAL	JOINT D'ARBRE	WELLENDICHRING
57	1010018A1		VITE	SCREW	VIS	SCHRAUBE
58	P4010125	1	COPERCHIO FISSA CAVO	COVER	COUVERCLE	DECKEL
59	P3040211	1	ALBERO TRAZIONE	SHAFT	ARBRE	WELLE
60	P1070008	2	SEEGER	CIRCLIP	SEEGER	SEEGER
61	P1020058	2	RONDELLA	SPACER	DOUILLE	ABSTANDSSTUECK
62	P1020057	2	RONDELLA	SPACER	DOUILLE	ABSTANDSSTUECK
63	P4020019		LEVA ALZARUO. POS. SIN.	LEFT REAR WHEEL LEVER	LEVIER ROUE POST. GAUCHE	RADHEBEL L.
63	P4020020		LEVA ALZARUO. POS. DX	RIGHT REAR WHEEL LEVER	LEVIER ROUE POST. DROITE	RADHEBEL R.
64	P01141198	2	PORTA RUOTA POST.	REAR WHEEL SUPPORT	SUPPORT ROUE POST.	HALTER
65	P2020077	2	POMELLO LEVA	KNOB	POIGNEE	ABDECKUNG
66	3030003A1	4	CUSCINETTO	BEARING	PALIER	LAGER
67	P4030011	2	COPRIRUOTA POSTER.	WHEEL COVER	PROTECTION	ABDECKUNG
68	P1020086	2	RIVETTO 4,8 x 10	RIVET	RIVET	NIET
69	P1020050	2	RONDELLA	SPRING WASHER	RONDELLE ELASTIQUE	FEDERSCHLEIBE
70	P2020088	2	DISTANZIALE	SPACER	DOUILLE	SCHEIBE
71	P2110001	4	SALTERELLO	KEY	CLAVETTE	SCHIBENFEDER
72	P2020060	2	COPRIPIGNONE	CAGE	CAGE	KAFIG
73	P3020028	1	MOLLA RICHIAMO	TRACTION SPRING	RESSORT DE TRACTION	FEDER
74	P2100001	2	CAMME CRICCHETTO	CAMME DRIVER	CLIQUETTE DE CAMME	MITNEHMER
75	P3020012	2	MOLLA PER CRICCHETTO	SPRING	RESSORT	FEDER
76	P2020059	2	BUSSOLA PIGNONE	BUSHING	DOUILLE	BUECHSE
77	P3050031	2	RUOTA DENT. (PIGNOG.)	PINION	PIGNON	RITZEL
78	1020020A1	2	RONDELLA	WASHER	RONDELLE	SCHEIBE
79	1070001A1	2	SEEGER	CIRCLIP	SEEGER	SEEGER
80	P3030023	4	CUSCINETTO	BEARING	PALIER	LAGER
81	P2020207	2	CERCHIO POSTERIORE	REAR WHEEL HUB	JANTE POST.	FELGE
82	P2020083	2	COPERTONE	TYRE	PNEU	REIFEN
83	P00015298	2	RUOTA POSTERIORE	WHEEL ASS. Y	ROUE COMPL.	RAD KOMPL.
84	1020007A1	2	RONDELLA	WASHER	RONDELLE	SCHEIBE
85	1010018A1	2	VITE	SCREW	VIS	SCHRAUBE
86	P2020062	2	COPRIMOZ. ANT. E POST.	COVER	COUVERCLE	DECKEL
87	P1010073		VITE	SCREW	VIS	SCHRAUBE
88	P1080016		SPINA	PIN	GOUILLE	STIFT
89	P1020054		RONDELLA	WASHER	RONDELLE	SCHEIBE
*	P00078719		CAMBIO COMPLETO	GEARBOX COMPL.	TRANSMISSION COMPL.	FAHRGETRIEBE KOMP.

Vista stegola superiore e comandi

Upper handle and controls

Mancheron partie supérieur et éléments de commande

Lenkeroberteil und Bedienungselemente



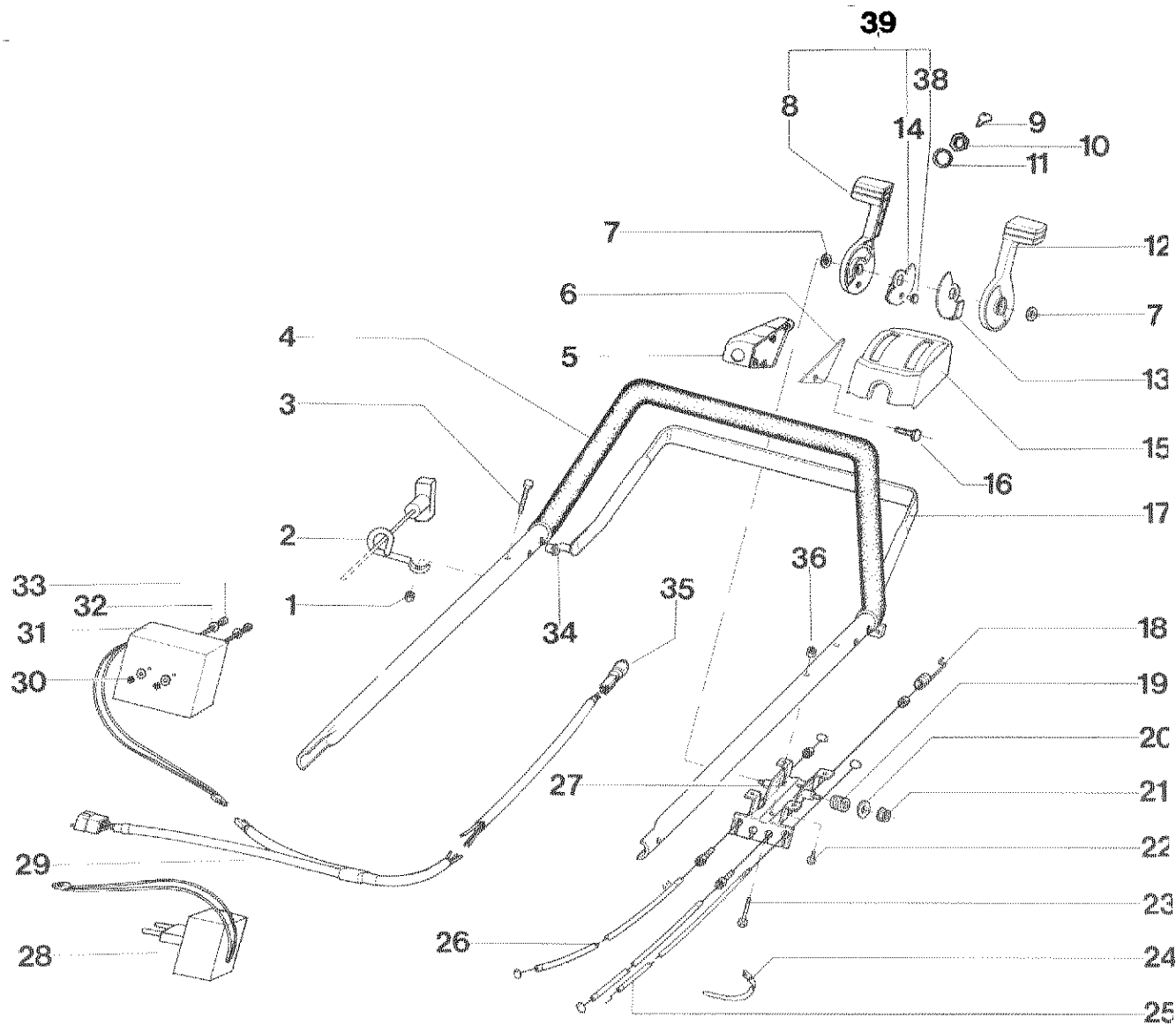
REF. N°	PART. N°	QTY	DESCRIZIONE	DESCRIPTION	DESCRIPTION	BESCHREIBUNG
1	1050002A1	1	DADO	NUT	ECROU	MUTTER
2	P01568398	1	SUPPORTO A RICCILO	SUPPORT	SUPPORT	HALTER
3	P1010165	1	VITE	SCREW	VIS	SCHRAUBE
4	P00070198	1	STEGOLA SUP. COMPL.	UPPER HANDLE BAR	GUIDON SUPERIEUR	OB. FUEHRUNGSHOLM
5	P2020167	1	LEVA CAMBIO	SHIFT LEVER	LEVIER DE COMMANDE	SCHALTERHEBEL
6	P1020085	2	RASAMENTO	SPACER	DOUILLE	ABSTANDSSTUECK
7	P4020126	1	PIASTRINA	PLATE	PLAQUE	PLATTE
8	P1020091	1	RIVETTO	RIVET	RIVET	NIET
9	P2020168	1	LEVA NERA CAMBIO	THROTTLE LEVER	LEVIER DE GAZ	GASHEBEL
10	P4020127	1	PIASTRINA	PLATE	PLAQUE	PLATTE
11	P2020065	1	SCATOLA COMANDI	CONTROL HOUSING	BOITE DE COMMANDE	STEUERGEHAUSE
12	P02042198	1	MANIGLIA TRAZIONE	TRACTION LEVER	TRACTION LEVER	ANTRIEBSHEBEL
13	P5010039	1	CAVO TRAZIONE	TRACTION CABLE	CABLE DE TRACTION	ANTRIEBSKABEL
14	P3020026	2	MOLLA	SPRING	RESSORT	FEDER
15	1020007A1	2	RONDELLA	WASHER	RONDELLE	SCHEIBE
16	1050003A1	2	DADO	NUT	ECROU	MUTTER
17	P1010061	4	VITE	SCREW	VIS	SCHRAUBE
18	P1010102	2	VITE	SCREW	VIS	SCHRAUBE
19	5040001A1	2	FASCETTA	CLAMP	CLAMP	RAPBAND
20	P5020051	1	CAVO ACCELERATORE	THROTTLE CABLE	CABLE DE GAZ	GASHEBEL
21	P5010037	1	CAVO PER SELET. MARCE	SHIFT CABLE	CABLE DE COMMANDE	SCHALTKABEL
22	P4020125	1	PORTA SCAT. COMANDI	CONTROL HOUSING SUPPORT	SUP. BOITE DE COMMANDE	HALTER
23	1050003A1	2	DADO	NUT	ECROU	MUTTER
24	P3040123	2	BUSSOLA PER MANIGLIA	BUSHING	DOUILLE	BUECHSE
25	P00744998	1	LEVA ROSSA CAMBIO 3 M. COMPLETA	SHIFT LEVER COMP.	ENS. DE LEV. DE COMM.	HEBELSATZ KPL.

Vista stegola superiore e comandi ELECTRIC START

Upper handle and controls ELECTRIC START

Mancheron partie supérieur et éléments de commande ELECTRIC START

Lenkeroberteil und Bedienungselemente ELECTRIC START





REF. N°	PART. N°	QTY	DESCRIZIONE	DESCRIPTION	DESCRIPTION	BESCHREIBUNG
1	1050002A1	1	DADO	NUT	ECROU	MUTTER
2	P01568398	1	SUPPORTO A RICCIOLO	SUPPORT	SUPPORT	HALTER
3	P1010165	1	VITE	SCREW	VIS	SCHRAUBE
4	P00070198	1	STEGOLA SUP. COMPL.	UPPER HANDLE BAR	GUIDON SUPERIEUR	OB. FUEHRUNGSHOLM
5	P2020190	1	SCAT. PER AVV. ELETTR.	STARTER HOUSING		SCHALTGEHAUESE
6	P2020191	1	COP. SCAT. AVV. ELETTR.	COVER	PROTECTION	ABDECKUNG
7	P1020085	2	RASAMENTO	SPACER	DOUILLE	ABSTANDSSTUECK
8	P2020167	1	LEVA ROSSA CAMB. 3 M.	SHIFT LEVER	LEVIER DE COMMANDE	SCHALTERHEBEL
9	P5030011	2	CHIAVE	KEY	CLAVETTE	SCHLUESSEL
10			VEDI PUNTO 35	SEE REF. 35	VOIR REF. 35	SIEHE REF. 35
11			VEDI PUNTO 35	SEE REF. 35	VOIR REF. 35	SIEHE REF. 35
12	P2020168	1	LEVA NERA CAMBIO 3 M.	THROTTLE LEVER	LEVIER DE GAZ	GASHEBEL
13	P4020127	1	PIASTRINA	PLATE	PLAQUE	PLATTE
14	P4020126	1	PIASTRINA	PLATE	PLAQUE	PLATTE
15	P2020192	1	SCATOLA COMANDI	CONTROL HOUSING	BOITIER DE CONTROLE	SCHALTGEHAUESE
16	P1010167	4	VITE	SCREW	VIS	SCHRAUBE
17	P02042198	1	MANIGLIA TRAZIONE	TRACTION LEVER	TRACTION LEVER	ANTRIEBSHEBEL
18	P5010039	1	CAVO TRAZIONE	TRACTION CABLE	CABLE DE TRACTION	ANTRIEBSKABEL
19	P3020026	2	MOLLA	SPRING	RESSORT	FEDER
20	1020007A1	2	RONDELLA	WASHER	RONDELLE	SCHEIBE
21	1050003A1	2	DADO	NUT	ECROU	MUTTER
22	P1010061	4	VITE	SCREW	VIS	SCHRAUBE
23	P1010102	2	VITE	SCREW	VIS	SCHRAUBE
24	5040001A1	2	FASCETTA	CLAMP	CLAMP	RAPBAND
25	P5020051	1	CAVO ACCELERATORE	THROTTLE CABLE	CABLE DE GAZ	GASHEBEL
26	P5010037	1	CAVO PER SELET. MARCE	SHIFT CABLE	CABLE DE COMMANDE	SCHALTKABEL
27	P4020125	1	PORTA SCAT. COMANDI	CONTROL HOUSING SUPPORT	SUP. BOITE DE COMMANDE	HALTER
28	P5030009	1	CARICA BATTERIA	BATTERY CHARGER	CHARGEUR	LADEGERAET
29	P5030017	1	CAVO	HARNES WIRE	TRONC DE CABLES	ANSCHLUSSKABEL
30	1050002A1	2	DADO	NUT	ECROU	MUTTER
31	P5030008	1	BATTERIA 12 V	BATTERY	BATTERIE	BATTERIE
32	P1020055	2	RONDELLA	WASHER	RONDELLE	SCHEIBE
33	P1010077	2	VITE	SCREW	VIS	SCHRAUBE
34	P3040123	2	BUSSOLA PER MANIGLIA	BUSHING	DOUILLE	BUECHSE
35	P5030010	1	BLOC. COMP. x AVV. EL.	KEY SWITCH	INTERRUPTEUR	SCHLUESSELSCHALTER
36	1050003A1	2	DADO	NUT	ECROU	MUTTER
38	P1020091	1	RIVETTO	RIVET	RIVET	NIET
39	P00744998	1	LEVA ROSSA CAMBIO 3 M. COMPLETA	SHIFT LEVER COMP.	ENS. DE LEV. DE COMM.	HEBELSATZ KPL.

Vista generale  
Complete machine  
Vue d'ensemble  
Gesamtansicht

