

# IBEA

Modello n. IB-5366F Serie dal n. 001

Stampato n. P5090174

**LISTA RICAMBI**  
**SPARE PARTS LIST**  
**ERSATZTEILLISTE**  
**LISTE DES PIECES DE RECHANGE**

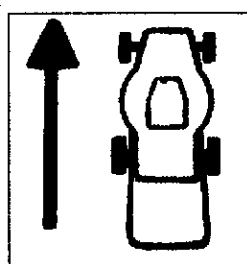


**SERIE 530 SCARICO LATERALE**

REF. N°	PART. N°	QTY	DESCRIZIONE	DESCRIPTION	DESCRIPTION	BESCHREIBUNG
1	P5140573	1	DECALCO	DECAL	MARQUAGE	AUFKLEBER
2	P5140574	1	DECALCO	DECAL	MARQUAGE	AUFKLEBER
3	P5140337	1	DECALCO	DECAL	MARQUAGE	AUFKLEBER
4	P5140538	1	DECALCO	DECAL	MARQUAGE	AUFKLEBER
5	P5140531	1	DECALCO	DECAL	MARQUAGE	AUFKLEBER
6	P5140552	1	DECALCO	DECAL	MARQUAGE	AUFKLEBER
7	P5140550	1	DECALCO	DECAL	MARQUAGE	AUFKLEBER
8	P5140334	1	DECALCO	DECAL	MARQUAGE	AUFKLEBER
*	P5110008	1	CHIAVE TUBO	KEY	CLEF	SCHLÜSSEL
*	P5090181	1	MANUALE ISTRUZIONI	INSTRUCTION MANUAL	MODE D'EMPLOI	BEDIENUNGSANLEITUNG



1



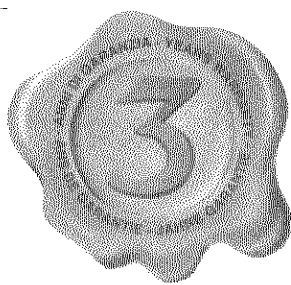
2



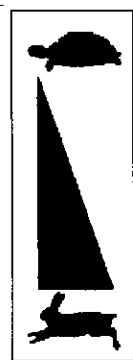
3



4



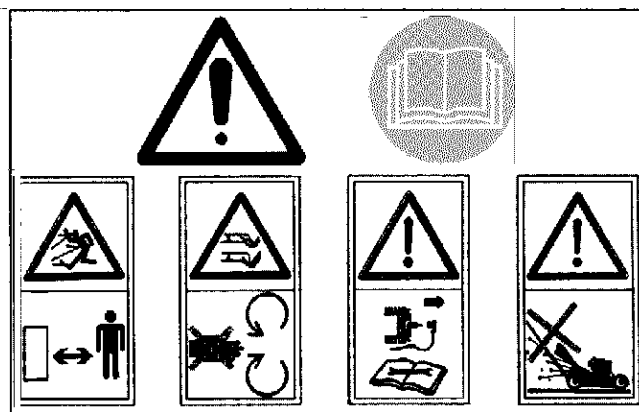
5



6



7



8

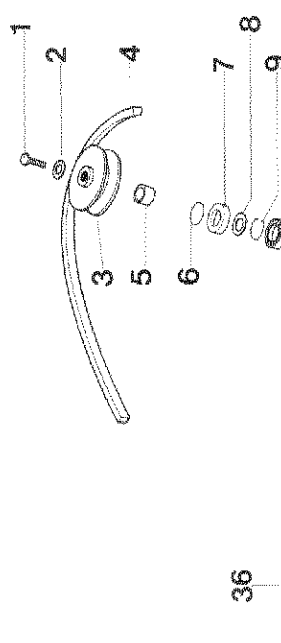
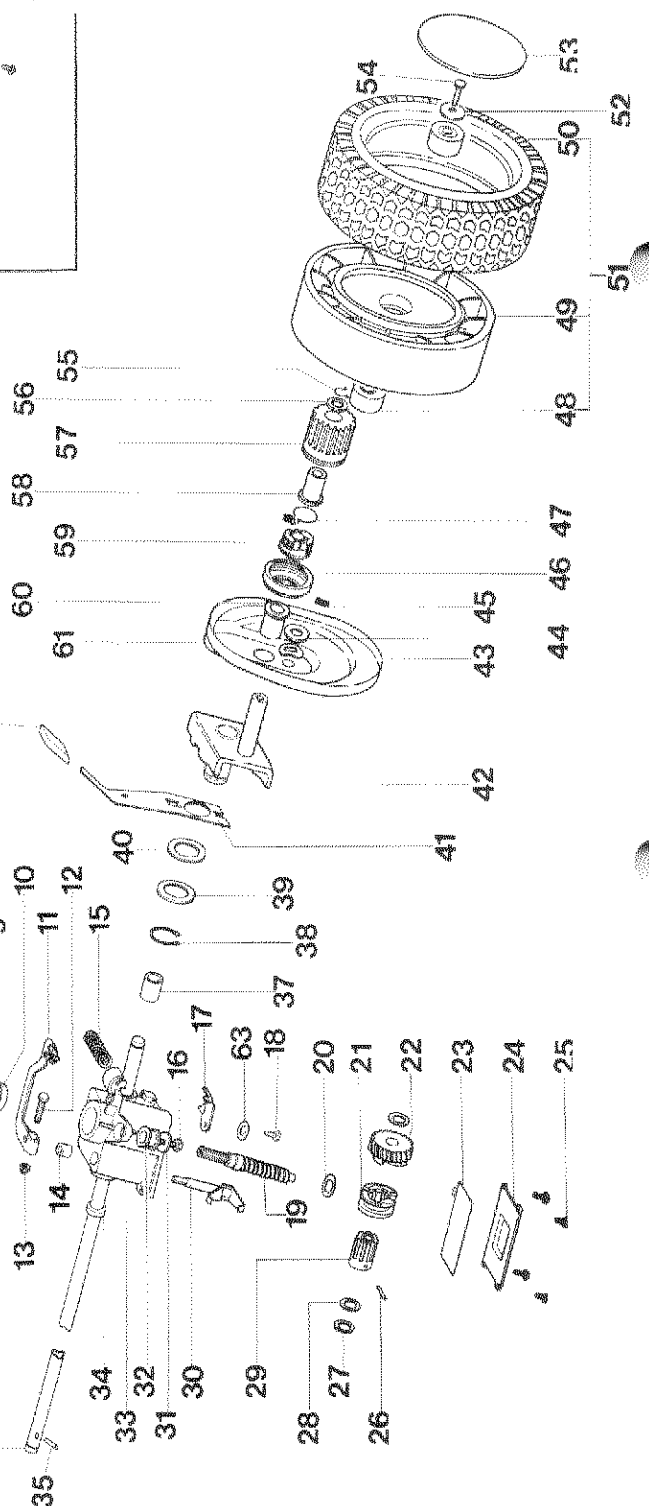
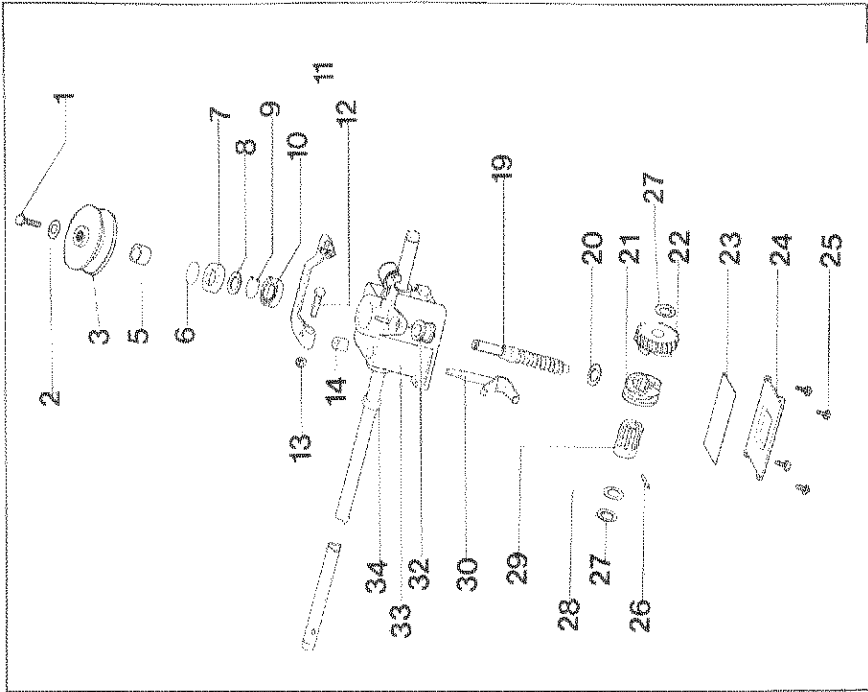
**IBEA S.p.A.**

Via De Gasperi, 5 - 22070 LUISAGO (CO)

Tel.: 031/92.91.50 - Telex: 380870

Telefax: 031/92.94.07-88.99.85

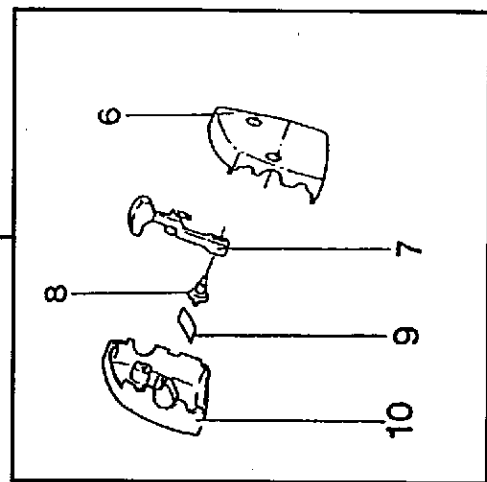
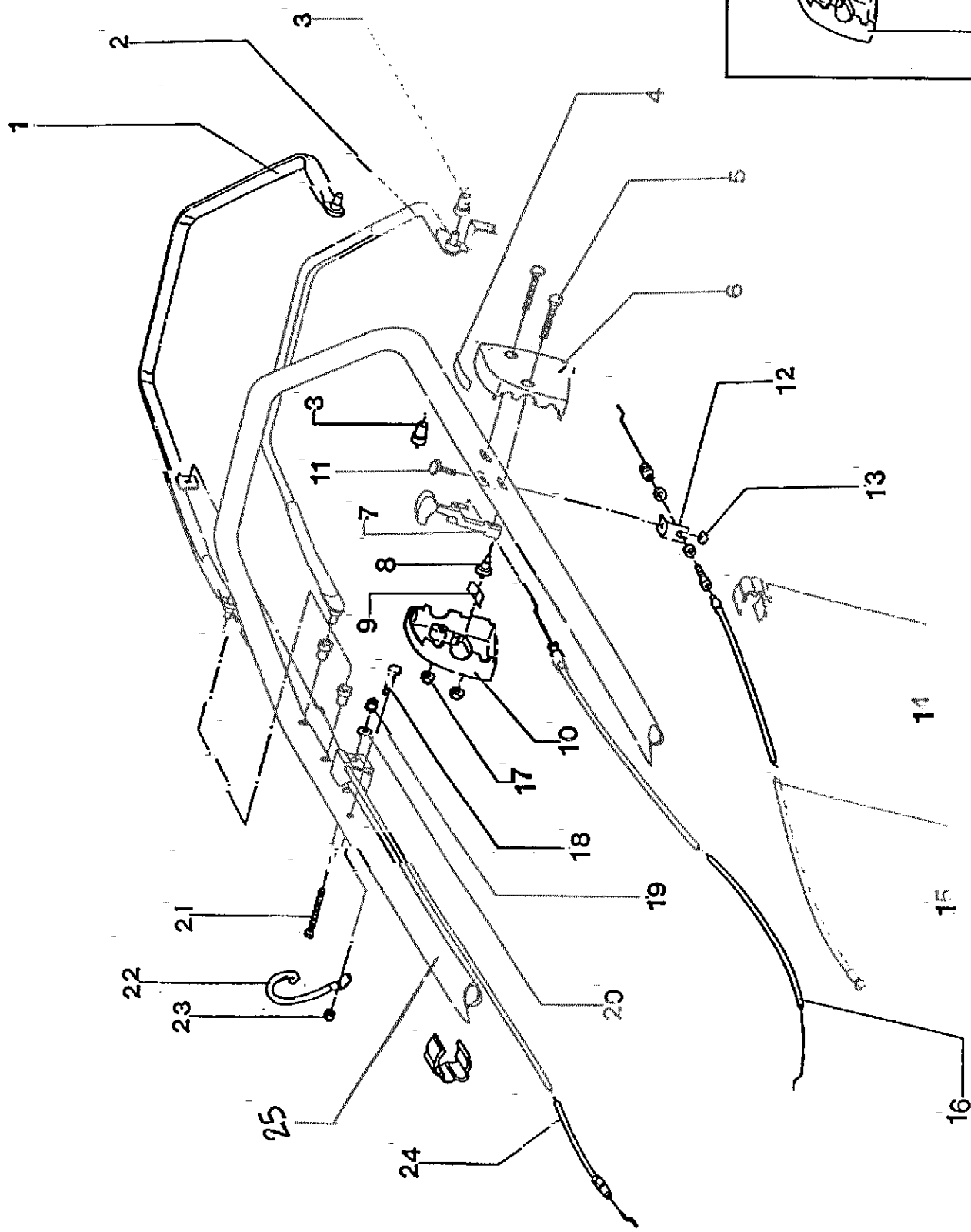
REF. N°	PART. N°	QTY	DESCRIZIONE	DESCRIPTION	DESCRIPTION	BESCHREIBUNG
			MOTORE	ENGINE	MOTEUR	MOTOR
2	P1050011	3	DADO	NUT	ÉCROU	MUTTER
3	P2020165	1	CAPOTTINA	ENGINE COVER	COUVERCLE MOTEUR	MOTORABDECKUNG
4	P1010154	2	VITE	SCREW	VIS	SCHRAUBE
5	P1010148	2	VITE	SCREW	VIS	SCHRAUBE
6	2020050A1	2	GALLETTO	KNOB	POIGNÉE	MUTTER
7	P02070251	2	STEGOLA INF.	LOWER HANDLEBAR	GUIDON INF.	HOLMUNTERTEIL
8	P1010125	2	VITE	SCREW	VIS	SCHRAUBE
9	P1050011	2	DADO	NUT	ÉCROU	MUTTER
10	P02071151	1	RINFORZO STEGOLA	REINFORCEMENT	RENFORCEMENT	VERSTÄRKUNG
11	1010003A1	2	VITE	SCREW	VIS	SCHRAUBE
12	P2020062	2	COPRIMOZZO	COVER	COUVERCLE	DECKEL
13	1010018A1	2	VITE	SCREW	VIS	SCHRAUBE
14	1020007A1	2	RONDELLA	WASHER	RONDELLE	SCHIBE
15	P2020083	2	COPERTONE	TYRE	PNEU	REIFEN
16	P3030013	4	CUSCINETTO	BEARING	PALIER	LAGER
17	P2020082	2	CERCHIO	WHEEL HUB	JANTE	FELGE
18	P2020128	2	COPRI RUOTA	WEEL COVER	PROTECTION	ABDECKUNG
19	P00015176	2	RUOTA ANT. COMPL.	FRONT WHEEL ASSY	ROUE ANT. COMPL.	RAD KOMPL.
20	P2020088	2	DISTANZIALE	SPACER	DOUILLE	ABSTANDSTÜCK
21	P1020050	2	RONDELLA	WASHER	RONDELLE	SCHIBE
22	P4020028	2	PORTA RUOTA ANT.	FRONT WHEEL SUPPORT	SUPPORT ROUE ANT.	RADHALTER
23	P1050012	2	DADO	NUT	ÉCROU	MUTTER
24	P3040119	2	BUSSOLA	BUSHING	DOUILLE	BÜCHSE
25	P4020039	1	LEVA ALZA RUOTA ANT.SX	L.H. FRONT LEVER	LEVIER ANT. GAUCHE	HEBEL L.
25	P4020038	1	LEVA ALZA RUOTA ANT.DX	R.H. FRONT LEVER	LEVIER ANT. DROITE	HEBEL R.
26	P1010116	2	VITE	SCREW	VIS	SCHRAUBE
27	P3040118	2	BUSSOLA	BUSHING	DOUILLE	BÜCHSE
28	P2020077	2	POMELLO	KNOB	POIGNÉE	ABDECKUNG
29	P1050011	1	DADO	NUT	ÉCROU	MUTTER
30	P02006451	4	SCOCCA	DECK	CHÂSSIS	GEHÄUSE
31	P1010076	1	VITE	SCREW	VIS	SCHRAUBE
32	P2020141	2	CARTER COPRICINGHIA	BELT COVER	PROTECTION	ABDECKUNG
33	P1060004	1	STARLOCK	STARLOCK	STARLOCK	STARLOCK
34	P00020351	1	CERNIERA	HINGE	CHARNIERE	SCHARNIER
35	P01027251	1	ASTINA	SHAFT	ARBRE	ACHSE
36	P3020022	2	MOLLA PER PORTELLO	SPRING	RESSORT	FEDER
37	P3040203	1	DISTANZIALE	SPACER	DOUBLE	ABSTANDSTÜCK
38	P00020151	2	DEFLETTORE	SHIELD	PLAQUE DE PROTECTION	SCHUTZ
39	P1050014	2	DADO	NUT	ÉCROU	MUTTER
40	P1060012	2	STARLOCK	STARLOCK	STARLOCK	STARLOCK
41	P1010150	1	VITE	SCREW	VIS	SCHRAUBE
42	P2020138	3	TARGHETTA IBEA	IBEA PLAQUE	PLAQUE IBEA	IBEA AUFKLEBER
43	1020014A1	2	RONDELLA	WASHER	RONDELLE	SCHIBE
44	P1010097	1	VITExB&S QUANTUM	SCREWx&S QUANTUM	VISx&S QUANTUM	SCHRAUBEx&S QUANTUM
44	P1010092	3	VITExB&S QUANTUM	SCHREWx&S QUANTUM	VISx&S QUANTUM	SCHRAUBEx&S QUANTUM
44	P1010101	1	VITExB&S 2 T.	SCREWx&S 2 T.	VISx&S 2 T.	SCHRAUBEx&S 2 T.
45	1090001A1	1	CHIAVETTA	KEY	CLAVETTE	SCHEIBENFEDER
46	P3040104	1	BUSSOLA LAMA	BLADE BUSHING	DOUILLE DE COUTEAU	MESSERBÜCHSE
47	P4050019	1	LAMA	BLADE	COUTEAU	MESSER
48	1110002A1	1	MOLLA A TAZZA	SPRING	RESSORT	FEDER
49	1020015A1	1	RONDELLA ELASTICA	SPRING WASHER	RONDELLE ELAST.	FEDERSCHIBE
50	P1010128		VITE LAMA	BLADE SCREW	VIS DE COUTEAU	MESSERSCHRAUBE



Tav. 2  
 Assale posteriore e trasmissione  
 Rear axle and gear box  
 Essieux arrière et transmission  
 Hinterachse und Getriebe

REF. N°	PART. N°	QTY	DESCRIZIONE	DESCRIPTION	DESCRIPTION	BESCHREIBUNG
2	1010018A1		VITE	SCREW	VIS	SCHRAUBE
3	1020007A1		RONDELLA	WASHER	RONDELLE	SCHEIBE
4	P3040048		PULEGGIA	PULLEY	POULIE	RIEMENSCHLEIBE
5	P3010019		CINGHIA TRASMISSIONE	TRANSMISSION BELT	COURROIE DE TRANSMISSION	RIEMEN
6	P3040049		BUSSOLA DISTANZIALE	BUSHING	DOUILLE	BÜCHSE
7	P3170013		O-RING	O-RING	JOINT TORIQUE	GUMMIRING
8	P3170010		PARAOLIO	OIL SEAL	JOINT D'ARBRE	WELLENDICHTRING
9	P1020051		SPESSORE	WASHER	RONDELLE	SCHEIBE
10	P1070004		SEEGER	CIRCLIP	SEEGER	SEEGER
11	P3030010		CUSCINETTO	BEARING	PALIER	LAGER
12	P4070011		LEVA PER RIDUTTORE	LEVER	LEVIER	HEBEL
13	P1010075		VITE	SCREW	VIS	SCHRAUBE
14	1050003A1		DADO	NUT	ÉCROU	MUTTER
15	P3170012		PARAOLIO	OIL SEAL	JOINT D'ARBRE	WELLENDICHTRING
16	P3020010		MOLLA	SPRING	RESSORT	FEDER
17	P1010073		VITE	SCREW	VIS	SCHRAUBE
18	P4030010		COPERCHIO MOLLA	SPRING COVER	COUVERCLE	FEDERHALTER
19	P1010076		VITE	SCREW	VIS	SCHRAUBE
20	P3040042		VITE SENZA FINE	WORM GEAR	VIS SANS FIN	SCHNECKE
21	P1020053		SPESSORE	WASHER	RONDELLE	SCHEIBE
22	P00038099		INNESTO	SELECTOR COLLAR	MANCHON	SCHALTBÜCHSE
23	P00038199		CORONA	WORM WHEEL	ROUE POUR VIS S. FIN	SCHNECKENRAD
24	P3170014		O-RING	O-RING	JOINT TORIQUE	GUMMIRING
25	P4110001	1	COPERCHIO SCATOLA	BOX COVER	COUVERCLE	DECKEL
26	P1010076	4	VITE	SCREW	VIS	SCHRAUBE
27	P1080007	1	SPINA	PIN	GOUPILLE	STIFT
28	1020020A1	2	SPESSORE	WASHER	RONDELLE	SCHEIBE
29	P1020051	1	SPESSORE	WASHER	RONDELLE	SCHEIBE
30	P3050030	1	BUSSOLA SCANALATA	BUSHING	DOUILLE CANNELÉE	KEILHÜLSE
31	P3040041	1	FORCELLA INNESTO	FORK	FOURCHE	GABEL
32	P1020054	1	RONDELLA	WASHER	RONDELLE	SCHEIBE
33	P2040010	1	GOMMINO	RUBBER TUBE	TUBE DE PROTECTION	SCHUTZHÜLLE
34	P00039199	1	SCATOLA RIDUTTORE	GEAR BOX	BOÎTE DE REDUCTEUR	UNTERSETZUNGSGETRIEBE
35	P3170011	2	PARAOLIO	OIL SEAL	JOINT D'ARBRE	WELLENDICHTRING
36	P1080004	2	SPINA ALBERO TRASM.	PIN	GOUPILLE	STIFT
37	P3040075	1	ALBERO DI TRASM.	TRANSMISSION SHAFT	ARBRE DE TRANSMISSION	WELLE
38	3030003A1	2	CUSCINETTO	BEARING	PALIER	LAGER
39	P1070008	2	SEEGER	CIRCLIP	SEEGER	SEEGER
40	P1020057	2	DISTANZIALE	SPACER	DOUILLE	ABSTANDSSTÜCK
41	P1020058	2	DISTANZIALE	SPACER	DOUILLE	ABSTANDSSTÜCK
42	P4020019	1	LEVA ALZA RUOTA POST. SX	LEFT REAR WHEEL LEVER	LEVIER ROUE POST. DROITE	RADHEBEL L.
43	P4020020	1	LEVA ALZA RUOTA POST. DX	RIGHT REAR WHEEL LEVER	LEVIER ROUE POST. DROITE	RADHEBEL R.
44	P4020029	2	PORTA RUOTA	WHEEL SUPPORT	SUPPORT	RADHALTER
45	P1020050	2	RONDELLA ELASTICA	SPRING WASHER	RONDELLE ELAST.	FEDERSCHLEIBE
46	P2020088	2	DISTANZIALE PER RUOTA	WHEEL SPACER	DOUILLE	ABSTANDSSTÜCK
47	P2110001	4	SALTARELLO	CAM	CLIQUET	NOCKEN
48	P2020060	2	COPRIPIGNONE	CAGE	CAGE	KÄFIG
49	P3020012	2	MOLLA	SPRING	RESSORT	FEDER
50	P3030013	4	CUSCINETTO RUOTA	WHEEL BEARING	PALIER	LAGER
51	P2020084	2	CERCHIO	WHEEL HUB	JANTE	FELGE
52	P2020083	2	COPERTONE	TYRE	PNEU	REIFEN
53	P00015276	2	RUOTA COMPL.	WHEEL ASSY.	ROUE COMPL.	RAD KOMPL.
54	1020007A1	2	RONDELLA	WASHER	RONDELLE	SCHEIBE
55	P2020062	2	COPRIMOZZO	COVER	COUVERCLE	DECKEL
56	1010018A1	2	VITE PER RUOTA	WHEEL SCREW	VIS POUR ROUE	RADSCHRAUBE
57	1070001A1	2	SEEGER	CIRCLIP	SEEGER	SEEGER
58	1020020A1	2	SPESSORE	WASHER	RONDELLE	SCHEIBE
59	P3050031	2	PIGNONE	PINION	PIGNON	RITZEL
60	P2020059	2	BUSSOLA	BUSHING	DOUILLE	BÜCHSE
61	P2100001	2	CRICCHETTO	DRIVER	CLIQUET	MITNEHMER
62	P2020070	2	BUSSOLA	BUSHING	DOUILLE	BÜCHSE
63	P4030011	4	COPRI RUOTA	WHEEL COVER	PROTECTION	ABDECKUNG
64	P2020077	1	POMELLO PER LEVA	KNOB	POIGNÉE	ABDECKUNG
65	P1020055		RONDELLA	WASHER	RONDELLE	SCHEIBE
66	P00078668		SCATOLA RIDUT. COMPL.	GEAR BOX ASS.Y	RÉDUCTEUR COMPL.	FAHRGETRIEBE KOMP.

Stegola superiore e comandi  
Upper handle and controls  
Guidon supérieur et éléments de commande  
Lenkeroberteil und Bedienungselemente



REF. N°	PART. N°	QTY	DESCRIZIONE	DESCRIPTION	DESCRIPTION	BESCHREIBUNG
	P4080038VE	1	MANIGLIA SYSTEM 2	SYSTEM 2 LEVER	LEVIER SYSTEM 2	SYSTEM 2 HEBEL
2	P02042181	1	MANIGLIA TRAZIONE	TRACTION LEVER	POIGNÉE DE TRACTION	ANTRIEBSHEBEL
3	P2020153	4	BUSSOLA	BUSHING	DOUILLE	BÜCHSE
4	P5140552	1	DECALCO ACCELERAT.	DECAL	MARQUAGE	AUFKLRBER
5	P1010102	2	VITE	SCREW	VIS	SCHRAUBE
6	P2020107	1	SCATOLA ACCELER. SX	L.H. HOUSING	BOÎTE GAUCHE	SCHALE L.
7	P00065099	1	LEVA ACCELERATORE	THROTTLE LEVER	LEVIER DE COMMANDE	GASHEBEL
8	P2020108	1	NOTTOLINO	BOLT	BOULON	STIFT
9	P4010059	2	MOLLA	SPRING	RESSORT	FEDER
10	P2020106	1	SCATOLA ACCELER. DX	R.H. HOUSING	BOÎTE DROITE	SCHALE R.
11	P1010078	1	VITE	SCREW	VIS	SCHRAUBE
12	P4010060	1	PIASTRINA	PLATE	PLAQUE	PLATTE
13	1050003A1		DADO	NUT	ÉCROU	MUTTER
14	P2020080	2	FERMA CAVO	CLIP	CLIP	HALTER
15	P5010029	1	CAVO TRAZIONE	TRACTION CABLE	CÂBLE DE TRACTION	ANTRIEBSKABEL
	P5020049	1	CAVO ACCELERATORE	THROTTLE CABLE	CÂBLE DE GAZ	GASKABEL
17	1050003A1	2	DADO	NUT	ÉCROU	MUTTER
18	P1010065		VITE	SCREW	VIS	SCHRAUBE
19	1050003A1		DADO	NUT	ÉCROU	MUTTER
20	1020013A1		RONDELLA	WASHER	RONDELLE	SCHEIBE
21	P1010203		VITE	SCREW	VIS	SCHRAUBE
22	P01068343		SUPPORTO A RICCIOLO	STARTER HOLDER	SUPPORT	HALTER
23	1050002A1		DADO	NUT	ÉCROU	MUTTER
24	P5010059		CAVO SYSTEM 2	SYSTEM 2 CABLE	CÂBLE SYSTEM 2	SYSTEM 2 KABEL
25	P3120103VE		STEGOLA SUPERIORE	UPPER HANDLE BAR	GUIDON SUP.	OB. FÜHRUNGSHOLM
26	P00035099		SCATOLA ACC. COMPL.	THROTTLE HOUSING ASS.Y	BOÎTE DE GAZ COMP.	GASGEHÄUSE KOMPL.

Vista generale  
Complete machine  
Vue d'ensemble  
Gesamtansicht

