

IBEA

Modello n.	Serie dal n.
IB-4203F	001
IB-4205F	001

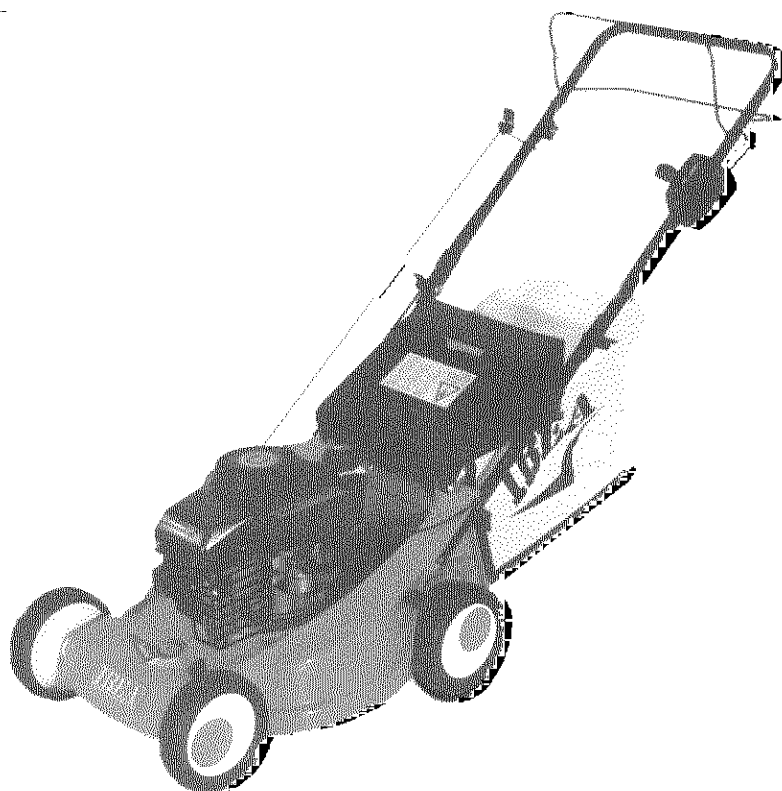
Stampato n. P5090150

LISTA RICAMBI

SPARE PART LIST

ERSATZTEILLISTE

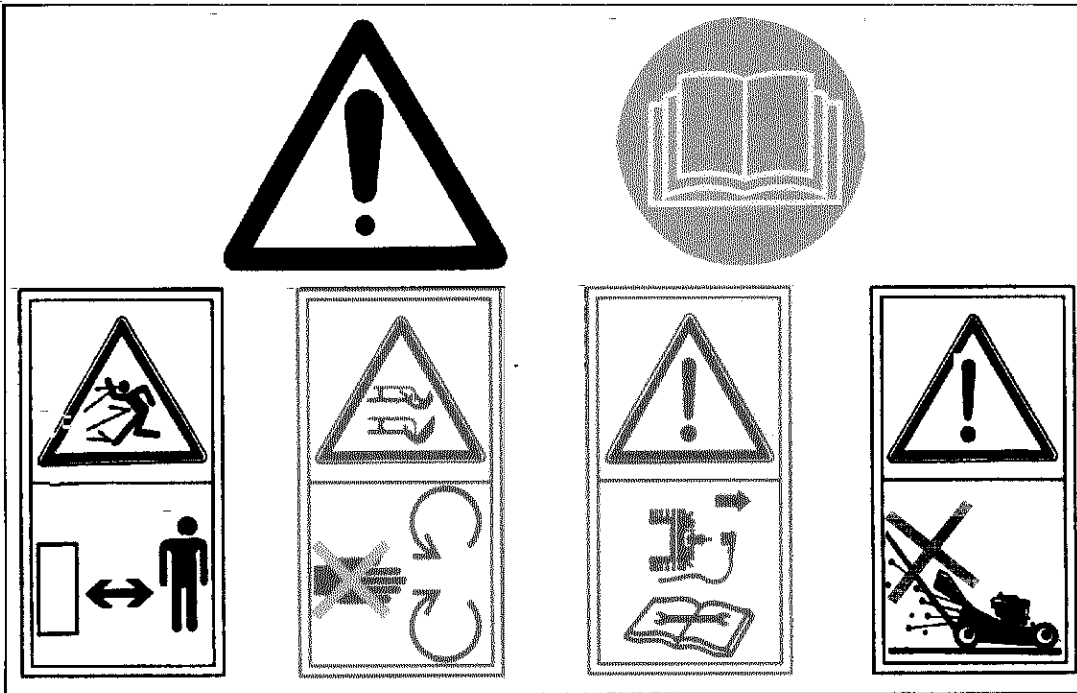
LISTE DES PIECES DE RECHANGE



SERIE 420 SPECIAL RED

REF. N°	PART. N°	QTY	DESCRIZIONE	DESCRIPTION	DESCRIPTION	BESCHREIBUNG
1	P5140334	1	DECALCO	DECAL	MARQUAGE	AUFKLEBER
2	P5140552	1	DECALCO	DECAL	MARQUAGE	AUFKLEBER
3	P5140573	1	DECALCO	DECAL	MARQUAGE	AUFKLEBER
4	P5140574	1	DECALCO	DECAL	MARQUAGE	AUFKLEBER
5	P5140138	4	DECALCO	DECAL	MARQUAGE	AUFKLEBER
6	P5140337	1	DECALCO	DECAL	MARQUAGE	AUFKLEBER
	P5140339	1	DECALCO	DECAL	MARQUAGE	AUFKLEBER
	P2020138	1	TARGHETTA IBEA	IBEA PLATE	PLAQUE IBEA	IBEA PLATTE
	P5110008	1	CHIAVE	KEY	CLEF	SCHLÜSSEL
	P5090016	1	MANUAL ISTRUZIONI	INSTRUCTION MANUAL	MODE D'EMPLOI	BEDIENUNGSANLEITUNG

①



③

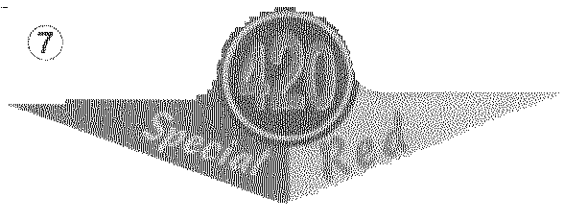


②

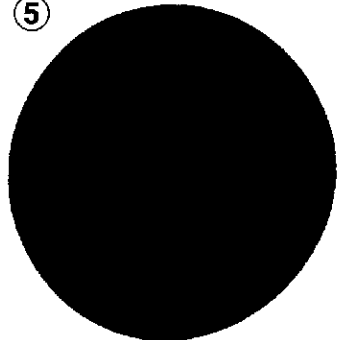
⑧



⑦



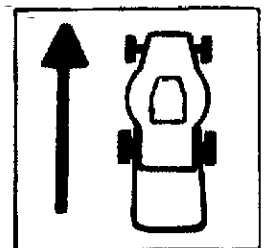
⑤



⑥



④



IBEA S.p.A.

Via De Gasperi, 5 - 22070 LUISAGO (CO)

Tel.: 031/92.91.50 - Telex: 380870

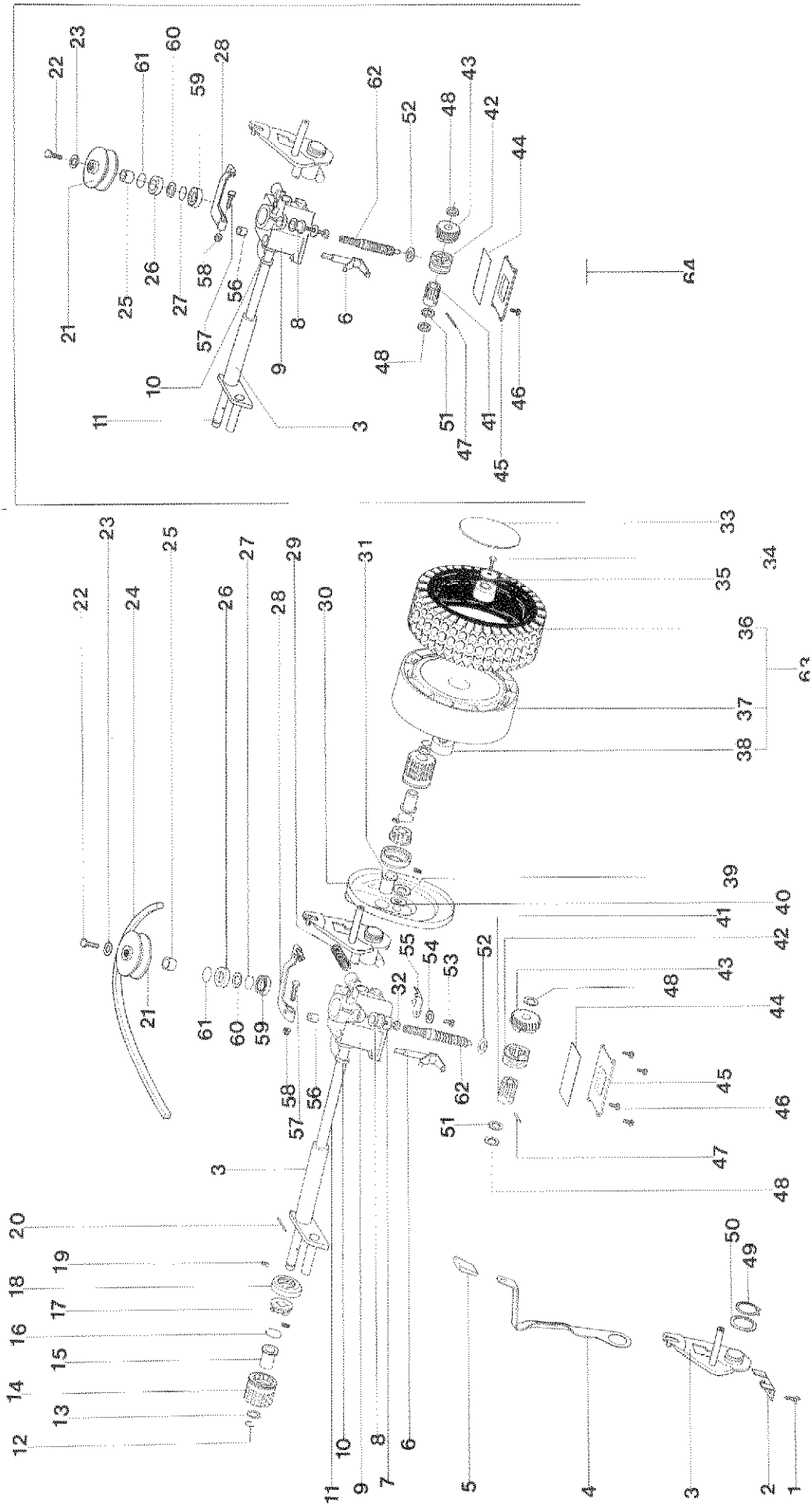
Telefax: 031/92.94.07-88.99.85

REF. N°	PART. N°	QTY	DESCRIZIONE	DESCRIPTION	DESCRIPTION	BESCHREIBUNG
1	P01011066	1	TELAIO CESTELLO	FRAME	CADRE	GESTELL
2	P3160049	1	SACCO	GRASSBAG	SAC DE RAMASSAGE	GRASFANGSACK
3	P00010266	1	CESTELLO COMPLETO	GRASSBAG ASS. Y	SAC DE RAMASSAGE COMPL.	GRASFANGSACK KOMPL.
4		1	MOTORE	ENGINE	MOTEUR	MOTOR
5	P1050011	3	DADO	NUT	ÉCROU	MUTTER
6	1090001A1	1	CHIAVETTA	KEY	CLAVETTE	SCHIBENFEDER
7	P1010061	2	VITE	SCREW	VIS	SCHRAUBE
8	P2020089	1	CARTER COPRICINGHIA	BELT COVER	COUVERCLE DE COURROIE	KEILRIEMENABDECKUNG
9	P00205066	1	SCOCCA	DECK	CHÂSSIS	GEHÄUSE
10	P2020092	1	PORTELLO	CHUTE DOOR	DÉFLECTEUR	KLAPPE
11	P3020011	1	MOLLA	SPRING	RESSORT	FEDER
12	P01027066	1	ASTINA	ROD	TIGE	STAB
13	P1060004	2	FISSATORE	WASHER	RONDELLE	SCHIBE
14	1020007A1	2	RONDELLA	WASHER	RONDELLE	SCHIBE
15	P2020220	2	COPRIMOZZO PER RUOTA	WHEEL COVER	COUVERCLE DE ROUE	RADABDECKUNG
16	1010018A1	2	VITE	SCREW	VIS	SCHRAUBE
17	P2020213	2	RUOTA	WHEEL	ROUE	RAD
18	P1020064	2	RIVETTO	STUD	RIVET	NIET
19	P01032166	1	PIASTRA REG. ALTEZZA	H.O.C. PLATE	PALQUE RÉG. COUPE	PLATTE
20	P1020064	2	RIVETTO	STUD	RIVET	NIET
21	P01032066	1	PIASTRA REG. ALTEZZA	H.O.C. PLATE	PLAQUE RÉG. COUPE	PLATTE
22	P3040087	2	BUSSOLA	BUSHING	DOUILLE	BÜCHSE
23	P2020077		POMELLO	KNOB	POIGNÉE	KNOPF
24	P00046066		LEVA ANTERIORE	FRONT LEVER	LEVIER ANT.	RADHEBEL
25	P2020088	2	DISTANZIALE	SPACER	RONDELLE	DISTANZBÜCHSE
26	P3040086	2	PERNO	PIN	GOUILLE	STIFT
27	P01030366		ASSALE ANTERIORE	FRONT AXLE	ESSIEU ANT.	FORDERACHSE
28	P4050020		LAMA	BLADE	LAME	MESSER
29	1110002A1		MOLLA	SPRING	RESSORT	FEDER
30	P1010128		VITE LAMA	BLADE SCREW	VIS DE COUTEAU	MESSERSCHRAUBE
31	P1020067	1	RONDELLA	WASHER -	RONDELLE	SCHIBE
32	P3040102	1	BUSSOLA LAMA, TRAZ.	BLADE BUSHING, SELF-P	DOUILLE DE LAME, TRACTÉ	MESSERBÜCHSE, MIT RADANTR.
32	P3040253	1	BUSSOLA LAMA, SPINTA	BLADE BUSHING, PUSH	DOUILLE DE LAME, POUSSÉ	MESSERBÜCHSE, HANDGESTOßEN
33	P3040099	1	DISTANZIALE	SPACER	DOUILLE	DISTANZBÜCHSE
34	P1020063	2	RONDELLA	WASHER	RONDELLE	SCHIBE
35	P1050011	2	DADO	NUT	ÉCROU	MUTTER
36	P1020080	3	RONDELLA	WASHER	RONDELLE	SCHIBE
37	P1010101	3	VITE	SCREW	VIS	SCHRAUBE
38	P2020166	3	BUSSOLA	BUSHING	DOUILLE	BÜCHSE
39	1020009A1	3	RONDELLA	WASHER	RONDELLE	SCHIBE

REF. N°	PART. N°	QTY	DESCRIZIONE	DESCRIPTION	DESCRIPTION	BESCHREIBUNG
1	P2020088	2	DISTANZIALE	SPACER	RONDELLE	DISTANZBÜCHSE
2	P1010090	4	VITE	SCREW	VIS	SCHRAUBE
3	P01033266	2	SUPPORTO	PLATE	PLAQUE	PLATTE
4	P01030067	1	ASSALE POSTERIORE	REAR AXLE	ESSIEU ARRIÈRE	HINTERACHSE
5	P1020058	1	RONDELLA	SPACER	DOUILLE	ABSTANDSSTÜCK
6	P1070008	1	SEEGER	CIRCLIP	SEEGER	SEEGER
7	P2020213	2	RUOTA	WHEEL	ROUE	RAD
8	1020007A1	2	RONDELLA	WASHER	RONDELLE	SCHEIBE
9	P2020220	2	COPRIMOZZO PER RUOTA	WHEEL COVER	COUVERCLE DE ROUE	RADABDECKUNG
10	1010018A1	2	VITE	SCREW	VIS	SCHRAUBE
11	P00046166	1	LEVA POSTERIORE	REAR LEVER	LEVIER ARRIÈRE	RADHEBEL
12	P2020077	1	POMELLO	KNOB	POIGNÉE	KNOPF

REF. N°	PART. N°	QTY	DESCRIZIONE	DESCRIPTION	DESCRIPTION	BESCHREIBUNG
1	P2020088	2	DISTANZIALE	SPACER	RONDELLE	DISTANZBÜCHSE
2	P1010090	4	VITE	SCREW	VIS	SCHRAUBE
3	P01033266	2	SUPPORTO	PLATE	PLAQUE	PLATTE
4	P01030067	1	ASSALE POSTERIORE	REAR AXLE	ESSIEU ARRIÈRE	HINTERACHSE
5	P1020058	1	RONDELLA	SPACER	DOUILLE	ABSTANDSSTÜCK
6	P1070008	1	SEEGER	CIRCLIP	SEEGER	SEEGER
7	P2020213	2	RUOTA	WHEEL	ROUE	RAD
8	1020007A1	2	RONDELLA	WASHER	RONDELLE	SCHEIBE
9	P2020220	2	COPRIMOZZO PER RUOTA	WHEEL COVER	COUVERCLE DE ROUE	RADABDECKUNG
10	1010018A1	2	VITE	SCREW	VIS	SCHRAUBE
11	P00046166	1	LEVA POSTERIORE	REAR LEVER	LEVIER ARRIÈRE	RADHEBEL
12	P2020077	1	POMELLO	KNOB	POIGNÉE	KNOPF

Assale posteriore e trasmissione, modello a trazione
Rear axle and gear box, self-propelled model
Essieux arrière et transmission, modèle tracté
Hinterachse und Getriebe, Modell mit Radantrieb



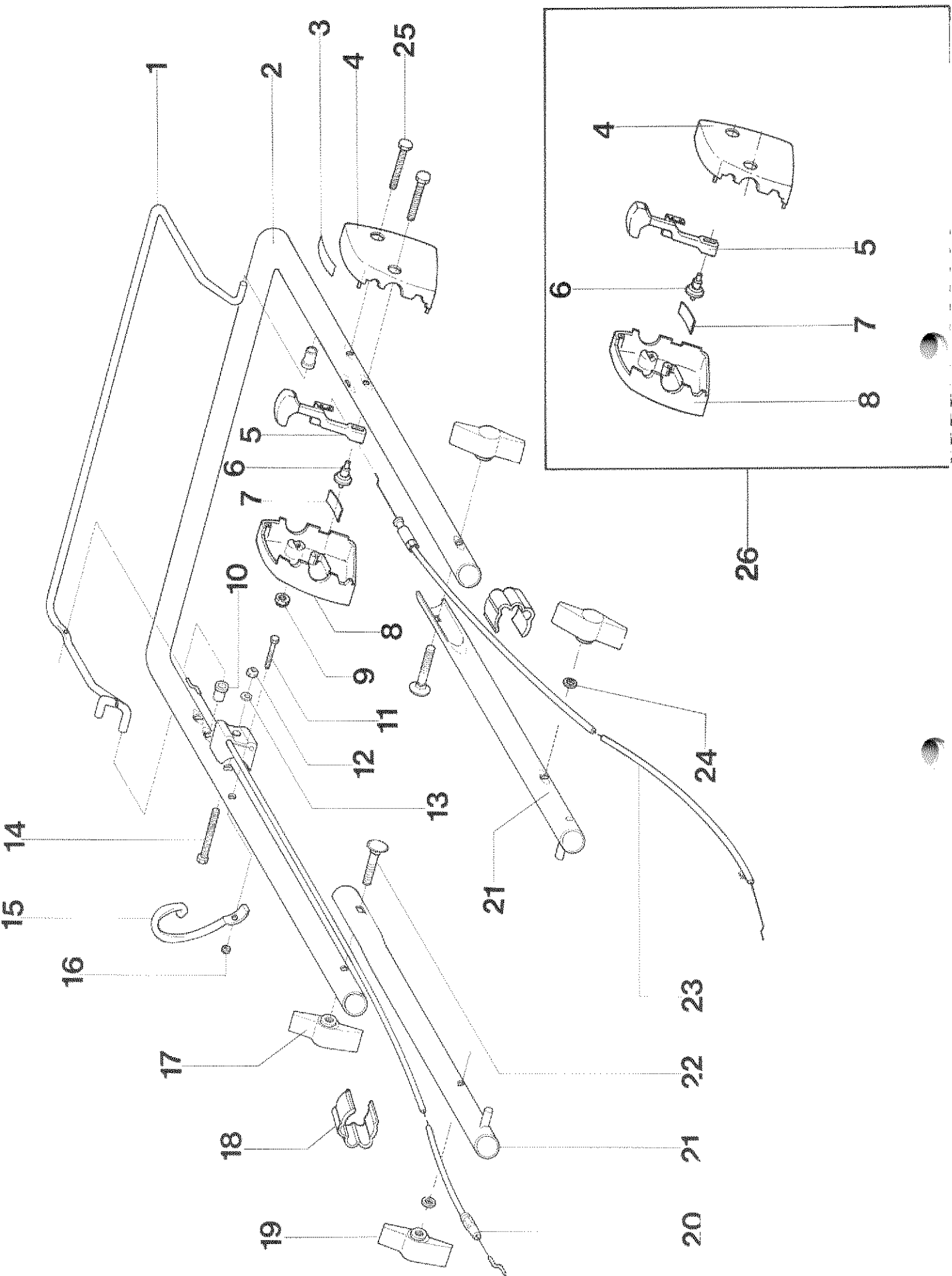
REF. N°	PART. N°	QTY	DESCRIZIONE	DESCRIPTION	DESCRIPTION	BESCHREIBUNG
1	P1010090	4	VITE	SCREW	VIS	SCHRAUBE
2	P01033266	2	PIASTRINA	PLATE	PLAQUE	PLATTE
3	P01030065	1	ASSALE POSTERIORE	REAR AXLE	ESSIEU POST.	ACHSE
4	P00046166	1	LEVA POSTERIORE	REAR LEVER	LEVIER POST.	HEBEL
5	P2020077	1	POMELLO PER LEVA	KNOB	POIGNÉE	ABDECKUNG
6	P3040041	1	FORCELLA INNESTO	FORK	FOURCHE	GABEL
7	P1020054	1	RONDELLA	WASHER	RONDELLE	SCHIBE
8	P2040010	1	GOMMINO	RUBBER TUBE	TUBE DE PROTECTION	SCHUTZHÜLLE
9	P00039199	1	SCATOLA	HOUSING	BOÎTE	SCHALE
10	P3170011	2	PARAOILIO	OIL SEAL	JOINT D'ARBRE	WELLENDICHRING
11	P3040093	1	ALBERO TRAZIONE	TRANSMISSION SHAFT	ARBRE DE TRACTION	ANTRIEBSWELLE
12	1070001A1	2	SEEGER	CIRCLIP	SEEGER	SEEGER
13	1020020A1	2	SPESSORE	WASHER	RONDELLE	SCHIBE
14	P3050031	2	PIGNONE	PINION	PIGNON	RITZEL
15	P2020059	2	BUSSOLA	BUSHING	DOUILLE	BÜCHSE
16	P3020012	2	MOLLA	SPRING	RESSORT	FEDER
17	P2100001	2	CRICCHETTO	DRIVER	CLIQUET	MITNEHMER
18	P2020060	2	COPRIPIGNONE	CAGE	CAGE	KÄFIG
19	P2110001	4	SALTERELLO	KEY	CLAVETTE	SCHIBENFEDER
20	P1080004	2	SPINA	PIN	GOUPILLE	STIFT
21	P3040048	1	PULEGGIA	PULLEY	POULIE	RIEMENSCHIBE
22	1010018A1	1	VITE	SCREW	VIS	SCHRAUBE
23	1020007A1	1	RONDELLA	WASHER	RONDELLE	SCHIBE
24	P3010013	1	CINGHIA	BELT	COURROIE	RIEMEN
25	P3040049	1	DISTANZIALE	SPACER	DOUILLE	ABSTANDSSTÜCK
26	P3170010	1	PARAOILIO	OIL SEAL	JOINT D'ARBRE	WELLENDICHRING
27	P1070004	1	SEEGER	CIRCLIP	SEEGER	SEEGER
28	P4070011	1	LEVA	LEVER	LEVIER	HEBEL
29	P3020010	1	MOLLA	SPRING	RESSORT	FEDER
30	P4030011	2	COPRIRUOTA	WHEEL COVER	PROTECTION	ABDECKUNG
31	P2020070	2	BUSSOLA	BUSHING	DOUILLE	BÜCHSE
32	P1010104	1	VITE	SCREW	VIS	SCHRAUBE
33	P2020062	2	COPRIMOZZO	COVER	COUVERCLE	DECKEL
34	1010018A1	2	VITE	SCREW	VIS	SCHRAUBE
35	1020007A1	2	RONDELLA	WASHER	RONDELLE	SCHIBE
36	P2020078	2	COPERTONE	TYRE	PNEU	REIFEN
37	P2020081	2	CERCHIO	WHEEL HUB	JANTE	FELGE
38	P3030013	4	CUSCINETTO	BEARING	PALIER	LAGER
39	P2020088	2	DISTANZIALE	SPACER	DOUILLE	ABSTANDSSTÜCK
40	P1020050	2	RONDELLA ELASTICA	SPRING WASHER	RONDELLE ÉLAST.	FEDERSCHIBE
41	P3050030	1	BUSSOLA SCANALATA	BUSHING	DOUILLE CANNELÉE	KEILHÜLSE
42	P00038099	1	INNESTO	SELECTOR COLLAR	MANCHON	SCHALTBÜCHSE
43	P00038199	1	CORONA	WORM WHEEL	ROUE POUR VIS S. FIN	SCHNECKENRAD
44	P3170014	1	O-RING	O-RING	JOINT TORIQUE	GUMMIRING
45	P4110001	1	COPERCHIO	COVER	COUVERCLE	DECKEL
46	P1010076	4	VITE	SCREW	VIS	SCHRAUBE
47	P1080007	1	SPINA ELASTICA	PIN	GOUPILLE ELAST.	STIFT
48	1020020A1	2	SPESSORE	WASHER	RONDELLE	SCHIBE
49	P1070008	1	SEEGER	CIRCLIP	SEEGER	SEEGER
50	P1020078	1	DISTANZIALE	SPACER	DOUILLE	ABSTANDSSTÜCK
51	P1020051	1	SPESSORE	WASHER	RONDELLE	SCHIBE
52	P1020053	1	SPESSORE	WASHER	RONDELLE	SCHIBE
53	P1010076	1	VITE	SCREW	VIS	SCHRAUBE
54	P1020055	1	RONDELLA	WASHER	RONDELLE	SCHIBE
55	P4030010	1	COPERCHIO MOLLA	SPRING COVER	COUVERCLE	FEDERHALTER
56	P3170012	1	PARAOILIO	OIL SEAL	JOINT D'ARBRE	WELLENDICHRING
57	P1010075	1	VITE	SCREW	VIS	SCHRAUBE
58	1050003A1	1	DADO	NUT	ÉCROU	MUTTER
59	P3030010	1	CUSCINETTO	BEARING	PAUER	LAGER
60	P1020051	1	SPESSORE	WASHER	RONDELLE	SCHIBE
61	P3170013	1	O-RING	O-RING	JOINT TORIQUE	GUMMIRING
62	P3040042	1	VITE SENZA FINE	WORM GEAR	VIS S. FIN	SCHNECKE
63	P00015281	1	RUOTA COMPL.	WHEEL ASS. Y	ROUE COMPL.	RAD KOMPL.
64	P00078665	1	RIDUTTORE COMPL.	GEAR BOX ASS. Y	RÉDUCTEUR COMPL.	GETRIEBE KOMP.

Stegola superiore e comandi, modello a spinta

Upper handle and controls, push model

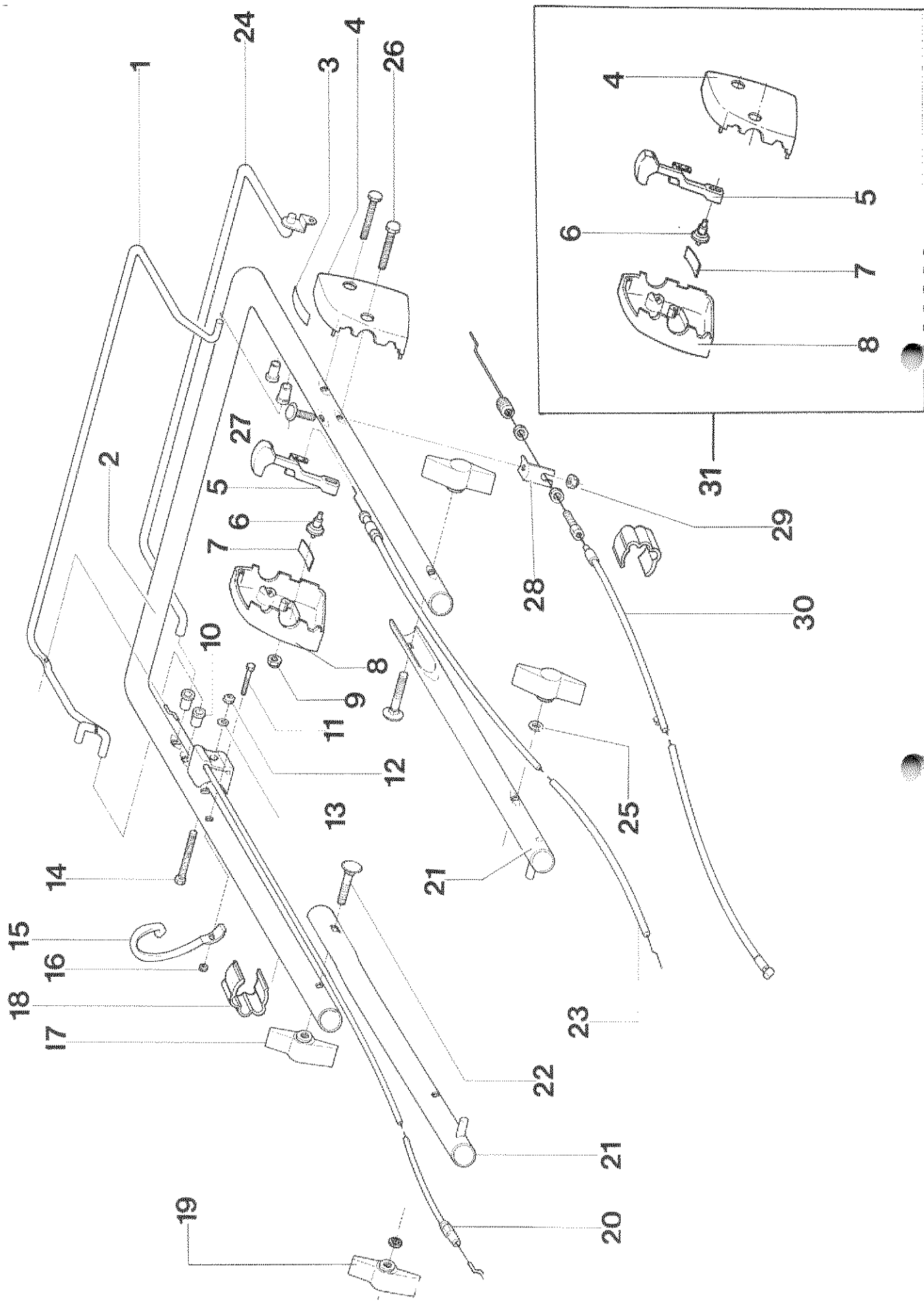
Guidon supérieur et éléments de commande, modèle à pousser

Lenkeroberteil und Bedienungselemente, handgestoßen Modell



REF. N°	PART. N°	QTY	DESCRIZIONE	DESCRIPTION	DESCRIPTION	BESCHREIBUNG
1	P3060038VE	1	LEVA SYSTEM 2	SYSTEM 2 LEVER	LEVIER SYSTEM 2	SYSTEM 2 HEBEL
2	P3120091VE	1	STEGOLA SUPERIORE	UPPER HANDLEBAR	GUIDON SUPERIEUR	OB. FÜHRUNGSHOLM
3	P5140552	1	DECALCO	DECAL	MARQUAGE	AUFKLEBER
4	P2020107	1	SCATOLA ACCELER. DX	L.H. HOUSING	BOÎTE GAUCHE	SCHALE L.
5	P00065099	1	LEVA ACCELERATORE	THROTTLE LEVER	LEVIER DE COMMANDE	GASHEBEL
6	P2020108	1	NOTTOLINO	BOLT	BOULON	STIFT
7	P4010059	2	MOLLA	SPRING	RESSORT	FEDER
8	P2020106	1	SCATOLA ACCELER. DX	R.H. HOUSING	BOÎTE DROITE	SCHALE R.
9	1050003A1	2	DADO	NUT	ÉCROU	MUTTER
10	P3040123	2	BUSSOLA	BUSHING	DOUILLE	BÜCHSE
11	P1010065	1	VITE	SCREW	VIS	SCHRAUBE
12	1050003A1	1	DADO	NUT	ÉCROU	MUTTER
13	1020013A1	1	RONDELLA	WASHER	RONDELLE	SCHIBE
14	P1010203	1	VITE	SCREW	VIS	SCHRAUBE
15	P01068343	1	SUPPORTO A RICCILOLO	STARTER HOLDER	SUPPORT	HALTER
16	1050002A1	1	DADO	NUT	ÉCROU	MUTTER
17	2020050A1	2	POMELLO	KNOB	POIGNÉE	MUTTER
18	P2020080	2	FERMA CAVO	CLIP	CLIP	HALTER
19	2020050A1	2	POMELLO	KNOB	POIGNÉE	MUTTER
20	P5010045	1	CAVO SYSTEM 2	SYSTEMS 2 CABLE	CÂBLE SYSTEM 2	SYSTEM 2 KABEL
21	P02070257	2	STEGOLA	LOWER HANDLEBAR	GUIDON INF.	LENKERUNTERTEIL
22	1010026A1	2	VITE	SCREW	VIS	SCHRAUBE
23	P5020027	1	CAVO ACCELERATORE	THROTTLE CABLE	CÂBLE DE GAZ	GASHEBEL
24	1020014A1	2	RONDELLA	WASHER	RONDELLE	SCHIBE
25	P1010102	2	VITE	SCREW	VIS	SCHRAUBE
26	P00035099	1	SCATOLA ACC. COMPL.	THROTTLE HOUSING ASS. Y	BOÎTE DE GAZ COMPL.	GASGEHÄUSE KOMP.

Stegola superiore e comandi, modello a trazione
Upper handle and controls, self-propelled model
Guidon supérieur et éléments de commande, modèle tracté
Lenkeroberteil und Bedienungselemente, Modell mit Radantrieb



REF. N°	PART. N°	QTY	DESCRIZIONE	DESCRIPTION	DESCRIPTION	BESCHREIBUNG
1	P3060038VE		LEVA SYSTEM 2	SYSTEM 2 LEVER	LEVIER SYSTEM 2	SYSTEM 2 HEBEL
2	P3120091VE		STEGOLA SUPERIORE	UPPER HANDLEBAR	GUIDON SUPÉRIEUR	OB. FÜHRUNGSHOLM
3	P5140552		DECALCO	DECAL	MARQUAGE	AUFKLEBER
4	P2020107		SCATOLA ACCELER. SX	L.H. HOUSING	BOÎTE GAUCHE	SCHALE L.
5	P00065099	1	LEVA ACCELERATORE	THROTTLE LEVER	LEVIER DE COMMANDE	GASHEBEL
6	P2020108	1	NOTTOLINO	BOLT	BOULON	STIFT
7	P4010069	2	MOLLA	SPRING	RESSORT	FEDER
8	P2020106	1	SCATOLA ACCELER. DX	R.H. HOUSING	BOÎTE DROITE	SCHALE R.
9	1050003A1	2	DADO	NUT	ÉCROU	MUTTER
10	P3040123	4	BUSSOLA	BUSHING	DOUILLE	BÜCHSE
11	P1010065		VITE	SCREW	VIS	SCHRAUBE
12	1050003A1		DADO	NUT	ÉCROU	MUTTER
13	1020013A1		RONDELLA	WASHER	RONDELLE	SCHIEBE
14	P1010203		VITE	SCREW	VIS	SCHRAUBE
15	P01068343		SUPPORTO A RICCIOLO	STARTER HOLDER	SUPPORT	HALTER
16	1050002A1	1	DADO	NUT	ÉCROU	MUTTER
17	2020050A1	2	POMELLO	KNOB	POIGNÉE	MUTTER
18	P2020080	2	FERMA CAVO	CLIP	CLIP	HALTER
19	2020050A1	2	POMELLO	KNOB	POIGNÉE	MUTTER
20	P5010045		CAVO SYSTEM 2	SYSTEM 2 CABLE	CÂBLE SYSTEM 2	SYSTEM 2 KABEL
21	P02070257	2	STEGOLA INFERIORE	LOWER HANDLEBAR	GUIDON INF.	LENKERUNTERTEIL
22	1010026A1	2	VITE	SCREW	VIS	SCHRAUBE
23	P5020027		CAVO	THROTTLE CABLE	CÂBLE DE GAZ	GASHEBEL
24	P3060037VE		MANIGLIA TRAZIONE	TRACTION LEVER	POIGNÉE DE TRACTION	ANTRIEBSHEBEL
25	1020014A1	2	RONDELLA	WASHER	RONDELLE	SCHIEBE
26	P1010102	2	VITE	SCREW	VIS	SCHRAUBE
27	P1010078		VITE	SCREW	VIS	SCHRAUBE
28	P4010060		PIASTRINA	PLATE	PLAQUE	PLATTE
29	1050003A1		DADO	NUT	ÉCROU	MUTTER
30	P5010030		CAVO TRAZIONE	TRACTION CABLE	CÂBLE DE TRACTION	ANTRIEBSKABEL
31	P00035099		SCATOLA ACC. COMPL.	THROTTLE HOUSING ASS. Y	BOÎTE DE GAZ COMPL.	GASGEHÄUSE KOMPL.

Vista generale
Complete machine
Vue d'ensemble
Gesamtansicht

