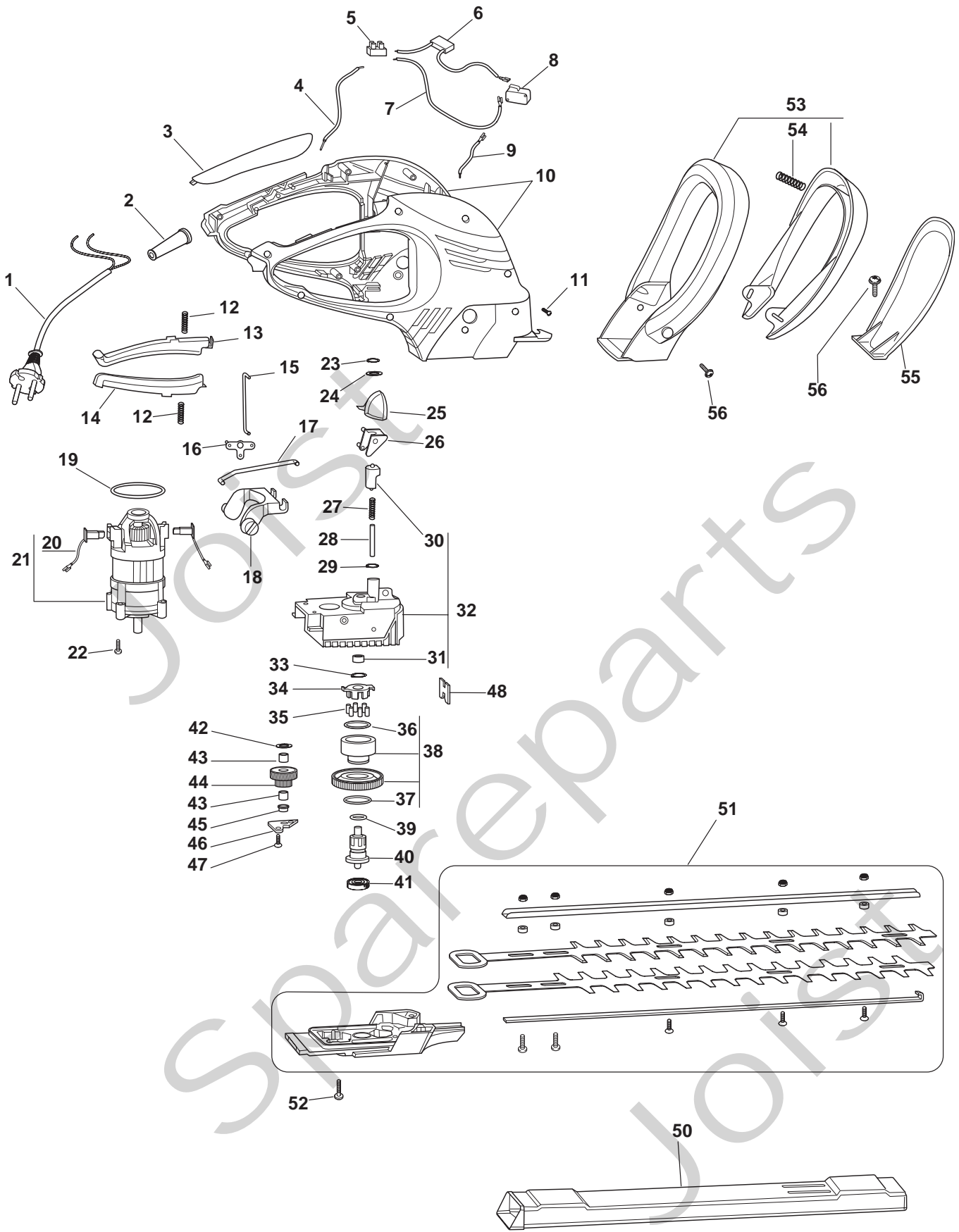


Genuine Spare Parts



Joist
Spareparts
Joist



Utgåva Issue		Bildnr Picture No		SH 60 PRO HÄCKSAX		SH 60 PRO HEDGE TRIMMER		Sida Page	
2007- 12		1957A						326	
Pos. Fig.	Antal/Quantity				Art nr Part No	Benämning	Description	Sats Kit	Anmärkning Notes
	5122 -11								
1	1			1911-1488-01	Anslutningskabel	Cable w.plug.....			
2	1			1911-1066-01	Gummihylsa	Grommet.....			
3	1			1911-1508-01	Lock.....	Grip cover			
4	1			1911-1526-01	Kabel	Cable			
5	1			1911-1104-01	Kopplingsbit	Cable connection.....			
6	1			1911-1525-01	Kondensator	Condensor			
7	1			1911-1523-01	Kabel	Cable			
8	1			1911-1524-01	Brytare.....	Inside switch.....			
9	1			1911-1619-01	Kabel	Cable			
10	1			1911-1598-01	Hus- gul	Housing- yellow		Inkl. pos 14	
11	8			1911-1105-01	Skruv	Screw			
12	2			1911-1083-01	Fjäder.....	Spring			
13	1			1911-1511-01	Kabelkanal	Cable grommet			
14	1			1911-1634-01	• Kabelkanal- nedre	• Switch panel- lower			
15	1			1911-1538-01	Länk.....	Link			
16	1			1911-1516-01	Vridarm	Turn lever			
17	1			1911-1537-01	Länk.....	Link			
18	1			1911-1514-01	Brytarelement	Switch element			
19	1			1911-1520-01	O- ring	O- ring			
20	2			1911-1617-01	• Kol	• Carbon brush			
21	1			1911-1616-01	Elmotor.....	Electric motor		Inkl. pos 20	
22	4			1911-1105-01	Skruv	Screw			
23	1			1911-1567-01	Bricka	Washer.....			
24	1			1911-1529-01	Bricka	Washer.....			
25	1			1911-1518-01	Vipparm.....	Rocker switch			
26	1			1911-1515-01	Insats.....	Insert			
27	1			1911-1530-01	Tryckfjäder.....	Pressure spring.....			
28	1			1911-1539-01	Kopplingsstift	Clutch pin			
29	1			1911-1528-01	Bricka	Thrust washer			
30	1			1911-1621-01	• Brytararm	• Switch lever			
31	1			1911-1546-01	• Nållager	• Needle bush			
32	1			1911-1564-01	Växelhus kpl	Gear housing cpl		Inkl. pos 30 - 31	
33	1			1911-1549-01	Ring	Round wire ring			
34	1			1911-1618-01	Excenteraxel	Excenter shaft			
35	6			1911-1531-01	Kopplingskon.....	Pitch cone			
36	1			1911-1521-01	• O- ring.....	• O- ring			
37	1			1911-1489-01	• Axelring	• Shaft ring			
38	1			1911-1543-01	Överbelastningsskydd	Overload device.....		Inkl. pos 36 - 37	
39	1			1911-1522-01	O- ring	O- ring			
40	1			1911-1555-01	Kopplingshus.....	Clutch cage			
41	1			1911-1554-01	Kullager	Ball bearing			
42	1			1911-1550-01	Bricka	Washer.....			
43	2			1911-1548-01	Nållager	Needle bush			
44	1			1911-1565-01	Drev	Gear set.....			
45	1			1911-1557-01	Distans	Liner.....			
46	1			1911-1556-01	Lagerfäste.....	Bearing bracket.....			
47	2			1911-1552-01	Skruv	Screw			
48	1			1911-1532-01	Filttätning.....	Felt seal.....			
50	1			1911-1519-01	Knivskydd.....	Blade cover			
51	1			1911-1615-01	Kniv kpl.....	Blade assy.....			
52	4			1911-1533-01	Skruv	Screw			
53	1			1911-1594-01	Handtag kpl	Handle assy.....		Inkl. pos 54	
54	2			1911-1551-01	• Tryckfjäder	• Pressure spring.....			
55	1			1911-1517-01	Handskydd.....	Hand cover.....			
56	4			1911-1534-01	Skruv	Screw.....			