

# Genuine Spare Parts

www.stiga.com

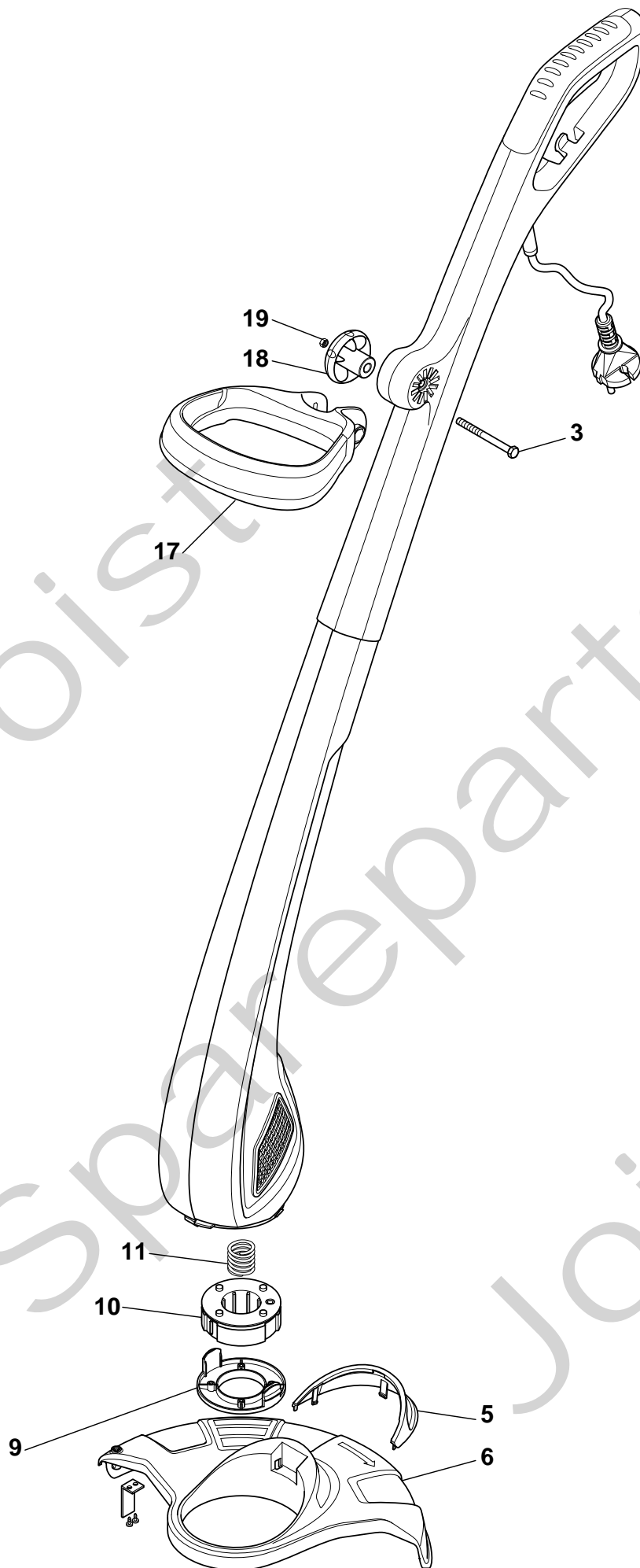
## SGT 350 Model Year 2011

- Use GLOBAL GARDEN PRODUCT Genuine Spare Parts specified in the parts list for repair and/or replacement.
- The contents described in the parts list may change due to improvement.
- The drawings of the spare parts are only indicative and might not represent the part in question exactly.
- The indications "right" - "left" - "front" - "rear" refer to the position of the operator when using the machine.
- When placing orders of parts for repair and/or replacement, make sure that the illustrated parts list is the one applying to the machine's year of manufacture, as shown on the identification plate attached to the machine.

COPYRIGHT by GLOBAL GARDEN PRODUCTS

All rights reserved. No part of this material may be reproduced or transmitted, in any form or by any means, electronic or mechanical, including photocopying, recording or by any information storage and retrieval system, without permission in writing from GLOBAL GARDEN PRODUCTS.

The STIGA logo is located in the bottom right corner of the page. It consists of the word "STIGA" in a bold, white, sans-serif font, with a registered trademark symbol (®) to its upper right. The text is set against a black rectangular background.





## SGT 350

Pos. Fig.	Antal Quantity	Art No Part No	Benämning	Description	Anmärkning Notes
3	1	2112100	Skruv	Screw	
5	1	118800541/0	Stötfångare	Protection	
6	1	118800542/0	Stänkskydd	Safety Cover Ass.Y	
9	1	1911-1635-01	Skydd	Lower Guard	
10	1	1911-9125-01	Skärhuvud kpl	Cutting Line Assy	
11	1	118800563/0	Fjäder	Spring	
17	1	118800543/0	Handtag	Secondary Handle	
18	1	118800545/0	Knopp	Knob	
19	1	12292100/0	Mutter	Nut	