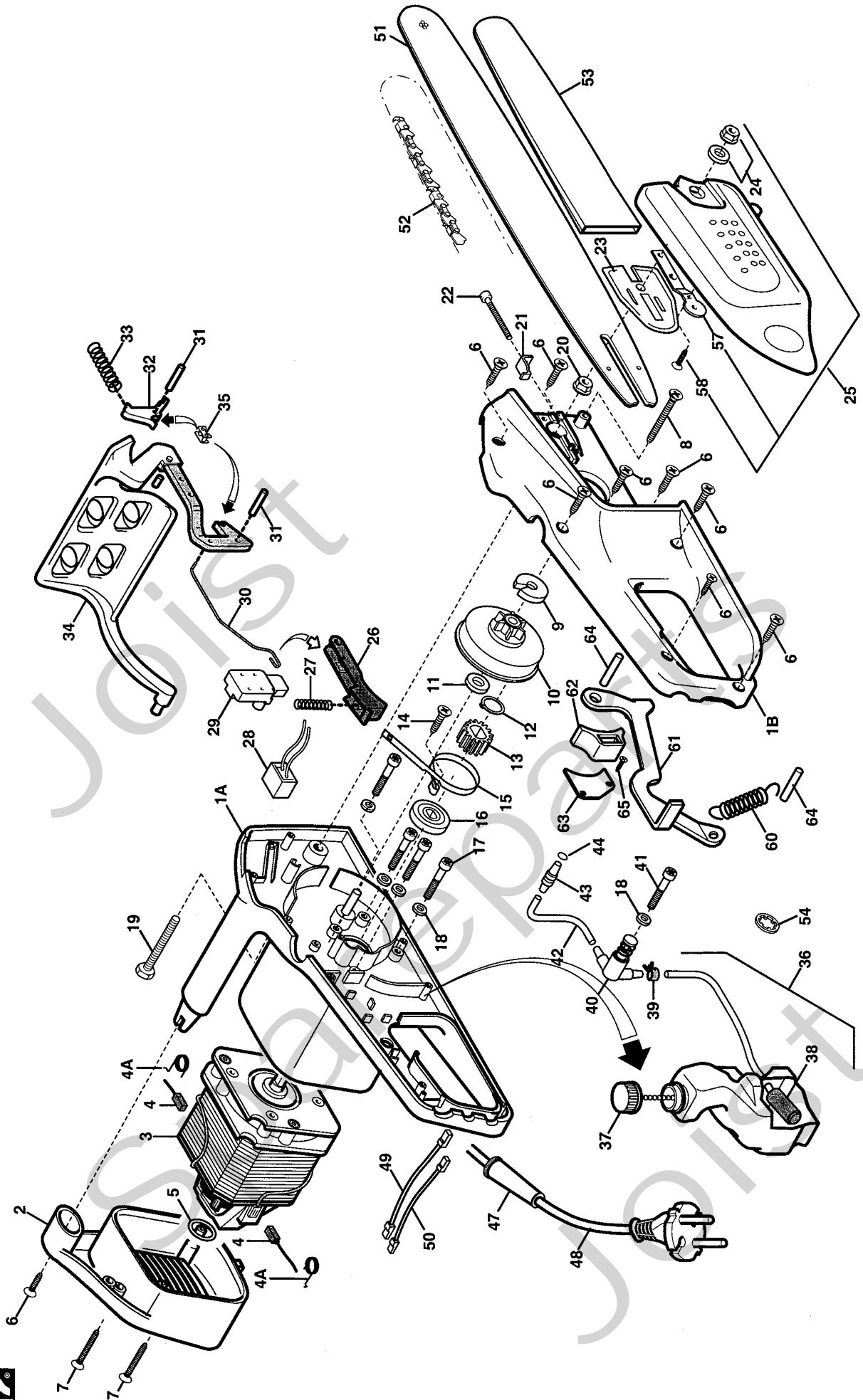


Genuine Spare Parts



Joist
Spareparts
Joist



Utgåva Issue		Bildnr Picture No		SE 1,8S SE 190		SE 1,8S SE 190		Sida Page
2004-12		1741						298
Pos. Fig.	Antal/Quantity			Art nr Part No	Benämning	Description	Sats Kit	Anmärkning Notes
	4119 -61 4112 -02							
X	1A	1		1911-3940-01	Handtag-vå (gul).....	Handle-LH (yellow).....		
X	1B	1		1911-3939-01	Handtag-hö (gul).....	Handle-RH (yellow).....		
	2	1		1911-3576-01	Ändkåpa (grå).....	End cover (grey).....		
	3	1		1911-3589-01	Motor m.fläkt.....	Motor w.fan.....		
	4	2		1911-3859-01	Kol m. hållare.....	Brush holder w.brush.....		
	4A	2		1911-3857-01	Fjäder.....	Spring.....		
	5	1		1911-3610-01	Tätningring.....	Seal ring.....		
	6	9		1911-3004-01	Skruv.....	Screw.....		
	7	2		1911-3254-01	Skruv.....	Screw.....		
	8	1		1911-3255-01	Skruv.....	Screw.....		
	9	1		1911-3356-01	Drevstopp.....	Gear stop plate.....		
	10	1		1911-3603-01	Kedjedrev.....	Gear.....		
	11	1		1911-3334-01	Bricka.....	Washer.....		
	12	1		1911-3331-01	Låsring.....	Snap ring.....		
	13	1		1911-3427-01	Motordrev.....	Motor sprocket.....		
	14	1		1911-3256-01	Skruv.....	Screw.....		
	15	1		1911-3363-01	Bromsband.....	Brake band.....		
	16	1		1911-3426-01	Bromsskiva.....	Brake disc.....		
	17	4		1911-3007-01	Skruv.....	Screw.....		
	18	5		1911-3015-01	Bricka.....	Washer.....		
	19	1		1911-3241-01	Skruv.....	Screw.....		
	20	1		1911-3030-01	Mutter.....	Nut.....		
	21	1		1911-3357-01	Kedjespännare.....	Chain tightener.....		
	22	1		1911-3244-01	Skruv.....	Screw.....		
	23	1		1911-3354-01	Svärdplåt.....	Bar plate.....		
	24	1		1911-3609-01	• Mutter m.bussning.....	• Nut w.bushing.....		
	25	1		1911-3606-01	Kedjekåpa kpl (grå).....	Chain cover (grey).....		Inkl. pos 24, 57, 58
	26	1		1911-3452-01	Brytarm.....	Switch lever.....		
	27	1		1911-3411-01	Fjäder.....	Spring.....		
	28	1		1911-3056-01	Kondensator.....	Condensor.....		
	29	1		1911-3314-01	Brytare.....	Switch.....		
	30	1		1911-3420-01	Brytarstång.....	Switch rod.....		
	31	1		1911-3309-01	Pinne.....	Pin.....		
	32	1		1911-3353-01	Arm.....	Lever.....		
	33	1		1911-3399-01	Bromsfjäder.....	Brake spring.....		
	34	1		1911-3605-01	Handskydd m.arm.....	Hand guard w.lever.....		
	35	1		1911-3535-01	Kedjebromslänk.....	Chain brake link.....		
	36	1		1911-3533-01	Oljetank kpl.....	Oil tank assy.....		Inkl. pos 37, 38
	37	1		1911-3534-01	• Tanklock.....	• Tank cap.....		
	38	1		1911-3608-01	• Oljefilter m.slang.....	• Oil filter w.pipe.....		
	39	1		1911-3327-01	Slangklämma.....	Clamp.....		
	40	1		1911-3616-01	Oljepump.....	Oil pump.....		
	41	1		1911-3001-01	Skruv.....	Screw.....		
	42	1		1911-3504-01	Oljerör.....	Oil tube.....		
	43	1		1911-3477-01	Munstycke.....	Nozzle.....		
	44	1		1911-3429-01	Packning.....	Gasket.....		
	47	1		1911-3461-01	Kabelskydd.....	Cord protector.....		
	48	1		1911-3319-01	Anslutningssladd.....	Power cord.....		
	49	1		1911-3318-01	Kabel- kort (hona).....	Cable-short (female).....		
	50	1		1911-3316-01	Kabel- lång (hona).....	Cable-long (female).....		
	51	1		1911-3225-01	Svärd.....	Bar.....		14" (3/8"x0.050)
X	52	1		1519-9001-50	Kedja (50E).....	Chain (50E).....		91VG (3/8")
	53	1		1911-3519-01	Kedjeskydd.....	Chain cover.....		14"
	54	2		9675-0008-02	Starlock.....	Locking washer.....		
	57	1		1911-3355-01	• Svärdplåt.....	• Bar plate.....		
	58	1		1911-3249-01	• Skruv.....	• Screw.....		
X	60	1		1911-3935-01	Fjäder.....	Spring.....		
X	61	1		1911-3934-01	Arm.....	Lever.....		
X	62	1		1911-3936-01	Länkblock.....	Link block.....		
X	63	1		1911-3933-01	Platta.....	Plate.....		
	64	2		1911-3309-01	Pinne.....	Pin.....		
X	65	1		1911-3950-01	Skruv.....	Screw.....		
X	99	1		1911-3518-01	Svärdnyckel.....	Bar key.....		Ej ill/not ill.