

Genuine Spare Parts

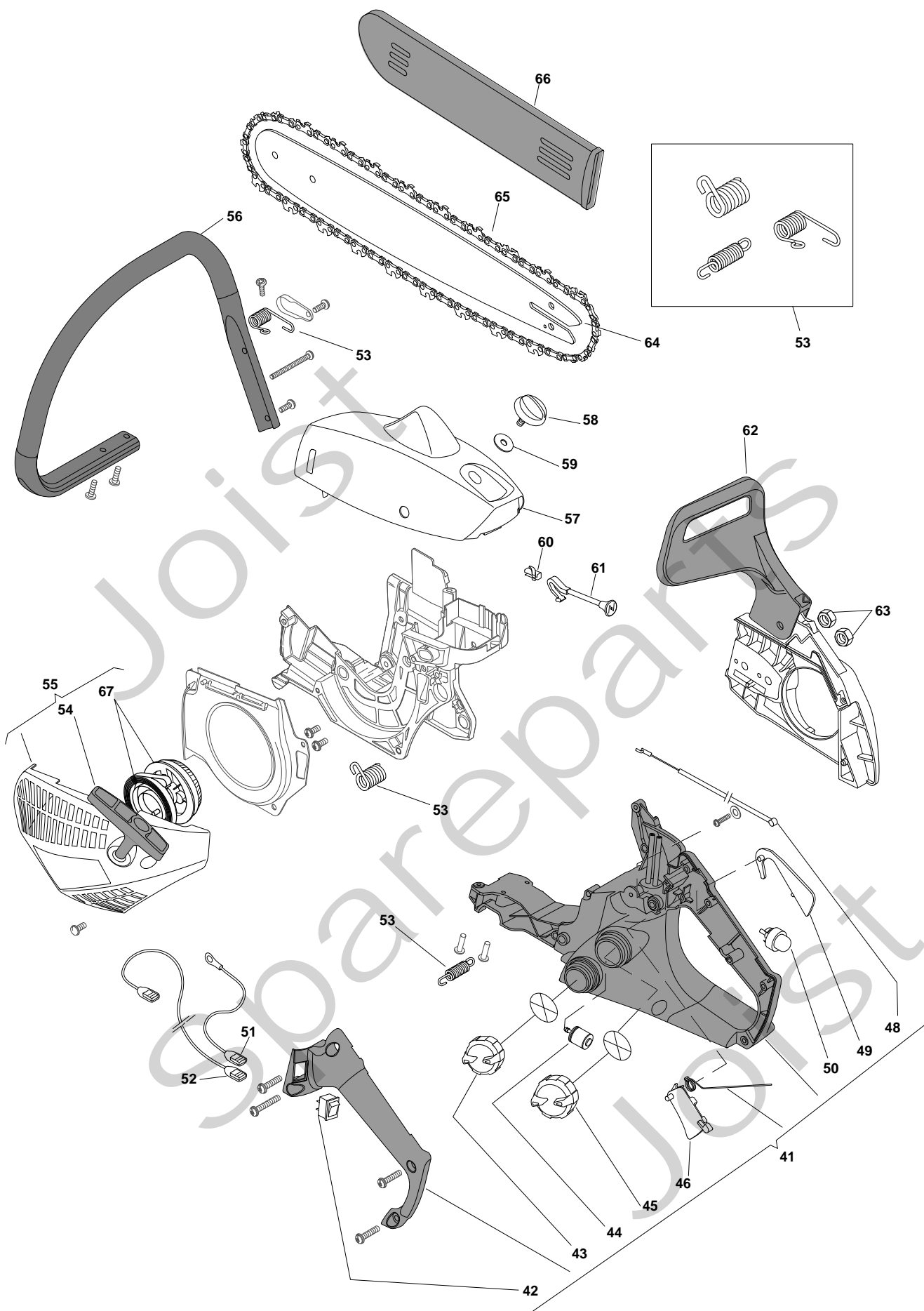
SP 350





SP 350 - Model Year 2009

| Pos. Fig. | Antal Quantity | Art No Part No | Benämning | Description | Anmärkning Notes |
|-----------|----------------|----------------|------------------|----------------------|------------------|
| 1 | 4 | 183878032/0 | Skruv | Screw | |
| 2 | 1 | 183070002/0 | Cylinderkåpa | Cylinder Pistor Assy | |
| 3 | 1 | 183590002/0 | Kolv kpl | Piston Assy | |
| 4 | 1 | 183303509/0 | Kolring | Piston Ring | |
| 5 | 1 | 183275300/0 | Shortblock | Short Block Engine | |
| 6 | 1 | 119035154/0 | Tätningring | Seal Ring | |
| 7 | 1 | 119035155/0 | Tätningring | Seal Ring | |
| 8 | 2 | 123878031/0 | Skruv | Screw | |
| 9 | 1 | 183303508/0 | Packning | Cylinder Gasket Assy | |
| 10 | 2 | 123652504/0 | Bricka | Washer | |
| 11 | 1 | 123235002/0 | Nållager | Needle Bearing | |
| 12 | 2 | 2432040 | Mutter | Nut | |
| 13 | 1 | 123140056/0 | Deflektor | Deflector | |
| 14 | 1 | 183740001/0 | Ljuddämpare | Muffler Assy | |
| 15 | 1 | 123878028/0 | Skruv | Screw | |
| 16 | 1 | 123044003/0 | Elektronikspole | Electronic Coil | |
| 17 | 1 | 183880003/0 | Svänghjul | Flywheel Assy | |
| 18 | 1 | 112154200/0 | Mutter | Nut | |
| 19 | 1 | 123072000/0 | Kil | Flywheel Key | |
| 20 | 1 | 23051000/0 | Tändstift | Spark Plug | |
| 21 | 1 | 123073504/0 | Insugningsrör | Intake Manifold | |
| 22 | 1 | 123054017/0 | Förgasare | Carburettor | |
| 23 | 1 | 123073505/0 | Insugningsrör | Intake Manifold Assy | |
| 24 | 2 | 123878019/0 | Skruv | Screw | |
| 25 | 1 | 123220004/0 | Luftfilter | Air Filter | |
| 26 | 4 | 123878033/0 | Skruv | Screw | |
| 27 | 1 | 183594504/0 | Oljepump | Oil Pump | |
| 28 | 1 | 123878030/0 | Snäckdrev | Worm | |
| 29 | 1 | 123235001/0 | Nållager | Needle Bearing | |
| 30 | 1 | 123050004/0 | Kopplingshjul | Clutch Drum | |
| 31 | 1 | 123657008/0 | Bricka | Washer | |
| 32 | 1 | 183215002/0 | Koppling | Clutch Ass.Y | |
| 33a | 1 | 183303510/0 | Kedjeskydd | Chain Guard | |
| 33 | 1 | 3657050 | Tändstiftsfjäder | Spark Plug Spring | |
| 34 | 1 | 3748880 | Tändstiftshatt | Spark Plug Cover | |
| 35 | 1 | 123057004/0 | Vevhus | Crankcase | |





SP 350 - Model Year 2009

| Pos. Fig. | Antal Quantity | Art No Part No | Benämning | Description | Anmärkning Notes |
|-----------|----------------|----------------|------------------|------------------------------|------------------|
| 41 | 1 | 183300014/0 | Handtag kpl | Handle Assy | |
| 42 | 1 | 123303001/0 | Brytare | Switch | |
| 43 | 1 | 183790005/0 | Tanklock | Tank Cap | |
| 44 | 1 | 183520001/0 | Bränslefilter | Intake Filter | |
| 45 | 1 | 183790004/0 | Tanklock | Fuel Tank-Cap Ass.Y | |
| 46 | 1 | 123315069/0 | Gasreglage | Throttle Lever | |
| 48 | 1 | 123066010/0 | Gaswire | Cable, Trottle | |
| 49 | 1 | 123315070/0 | Säkerhetsspärr | Safety Lever | |
| 50 | 1 | 6980242 | Primerknopp | Primer | |
| 51 | 1 | 123065020/0 | Jordkabel | Earth Cable | |
| 52 | 1 | 123065021/0 | Stoppkabel | Stop Wire | |
| 53 | 1 | 183430550/0 | Fjäder | Shock Absorber Spring Assy | |
| 54 | 1 | 3749437 | Starthandtag | Starter Handle | |
| 55 | 1 | 183058015/0 | Start kpl-gul | Starter Assy Yellow | |
| 55 | 1 | 183058029/0 | Start kpl | Starter Assy Black | |
| 56 | 1 | 123105002/0 | Handtag | Handle | |
| 57 | 1 | 123087013/0 | Cylinderkåpa | Cylinder Cover Yellow | |
| 58 | 1 | 123593504/0 | Låsratt | Knob | |
| 59 | 1 | 123160053/0 | Bussning | Bushing | |
| 60 | 1 | 123202001/0 | Hylsa | Grommet | |
| 61 | 1 | 123315068/0 | Chokearm | Choke Lever | |
| 62 | 1 | 183059010/0 | Kopplingshus-gul | Clutch Ho. W/Br. Assy Yellow | |
| 62 | 1 | 183059019/0 | Kopplingshus | Clutch Ho. W/Br. Assy Black | |
| 63 | 2 | 123120006/0 | Mutter | Nut | |
| 64 | 1 | 123900350/0 | Svärd | Guide Bar 14" | |
| 64 | 1 | 123900351/0 | Svärd | Guide Bar 16" | |
| 65 | 1 | 4113703 | Kedja | Chain 14" | |
| 65 | 1 | 4113705 | Kedja | Chain 16" | |
| 66 | 1 | 4181297 | Kedjeskydd | Chain Cover | |
| 66 | 1 | 4181307 | Kedjeskydd | Chain Cover | |
| 67 | 1 | 183604000/0 | Linhjul | Starter Pulley | |