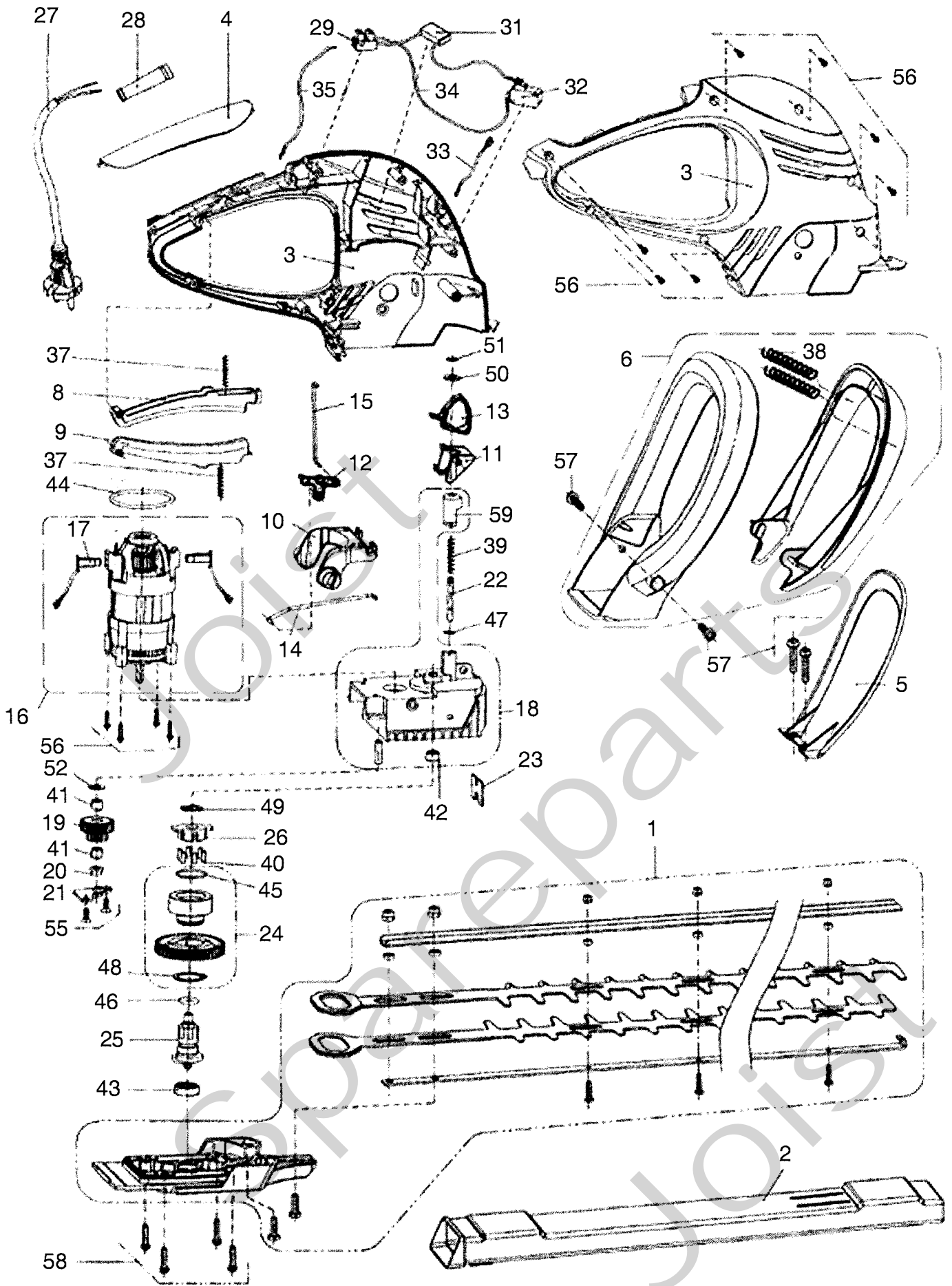


Genuine Spare Parts



Joist
Spareparts
Joist



Utgåva Issue		Bildnr Picture No		SH 60 PRO HÄCKSAX	SH 60 PRO HEDGE CUTTER	Sida Page		
2006-12		1957				322		
Pos. Fig.	Antal/Quantity			Art nr Part No	Benämning	Description	Sats Kit	Anmärkning Notes
	5122 -11							
1	1			1911-1615-01	Kniv kpl.....	Blade assy.....		
2	1			1911-1519-01	Knivskydd.....	Blade cover.....		
3	1			1911-1598-01	Hus.....	Housing.....		
4	1			1911-1508-01	Lock.....	Grip cover.....		
5	1			1911-1517-01	Handskydd.....	Hand cover.....		
6	1			1911-1594-01	Handtag kpl.....	Handle assy.....		Inkl. pos 38
8	1			1911-1511-01	Kabelkanal.....	Cable grommet.....		
9	1			1911-1512-01	Kabelkanal.....	Cable grommet.....		
10	1			1911-1514-01	Brytarelement.....	Switch element.....		
11	1			1911-1515-01	Insats.....	Insert.....		
12	1			1911-1516-01	Vridarm.....	Turn lever.....		
13	1			1911-1518-01	Vipparm.....	Rocker switch.....		
14	1			1911-1537-01	Länk.....	Link.....		
15	1			1911-1538-01	Länk.....	Link.....		
16	1			1911-1616-01	Elmotor.....	Electric motor.....		Inkl. pos 17
17	2			1911-1617-01	• Kol.....	• Carbon brush.....		
18	1			1911-1564-01	Växelhus kpl.....	Gear housing cpl.....		Inkl. pos 42, 59
19	1			1911-1565-01	Drev.....	Gear set.....		
20	1			1911-1557-01	Distans.....	Liner.....		
21	1			1911-1556-01	Lagerfäste.....	Bearing bracket.....		
22	1			1911-1539-01	Kopplingsstift.....	Clutch pin.....		
23	1			1911-1532-01	Filttätning.....	Felt seal.....		
24	1			1911-1543-01	Överbelastningsskydd.....	Overload device.....		Inkl. pos 45, 48
25	1			1911-1618-01	Excenteraxel.....	Excenter shaft.....		
26	1			1911-1555-01	Kopplingshus.....	Clutch cage.....		
27	1			1911-1488-01	Anslutningskabel.....	Cable w. plug.....		
28	1			1911-1066-01	Gummihylsa.....	Grommet.....		
29	1			1911-1104-01	Kopplingsbit.....	Cable connection.....		
31	1			1911-1525-01	Kondensator.....	Condensor.....		
32	1			1911-1524-01	Brytare.....	Inside switch.....		
33	1			1911-1619-01	Kabel.....	Cable.....		
34	1			1911-1523-01	Kabel.....	Cable.....		
35	1			1911-1526-01	Kabel.....	Cable.....		
37	2			1911-1083-01	Fjäder.....	Spring.....		
38	2			1911-1551-01	• Tryckfjäder.....	• Pressure spring.....		
39	1			1911-1530-01	Tryckfjäder.....	Pressure spring.....		
40	6			1911-1531-01	Kopplingskon.....	Pitch cone.....		
41	2			1911-1548-01	Nållager.....	Needle bush.....		
42	1			1911-1546-01	• Nållager.....	• Needle bush.....		
43	1			1911-1554-01	Kullager.....	Ball bearing.....		
44	1			1911-1520-01	O-ring.....	O-ring.....		
45	1			1911-1521-01	• O-ring.....	• O-ring.....		
46	1			1911-1522-01	O-ring.....	O-ring.....		
47	1			1911-1528-01	Bricka.....	Thrust washer.....		
48	1			1911-1489-01	• Axelring.....	• Shaft ring.....		
49	1			1911-1549-01	Ring.....	Round wire ring.....		
50	1			1911-1620-01	Bricka.....	Washer.....		
51	1			1911-1567-01	Bricka.....	Washer.....		
52	1			1911-1550-01	Bricka.....	Washer.....		
55	2			1911-1552-01	Skruv.....	Screw.....		
56	11			1911-1105-01	Skruv.....	Screw.....		
57	4			1911-1534-01	Skruv.....	Screw.....		
58	4			1911-1533-01	Skruv.....	Screw.....		
59	1			1911-1621-01	• Brytarm.....	• Switch lever.....		