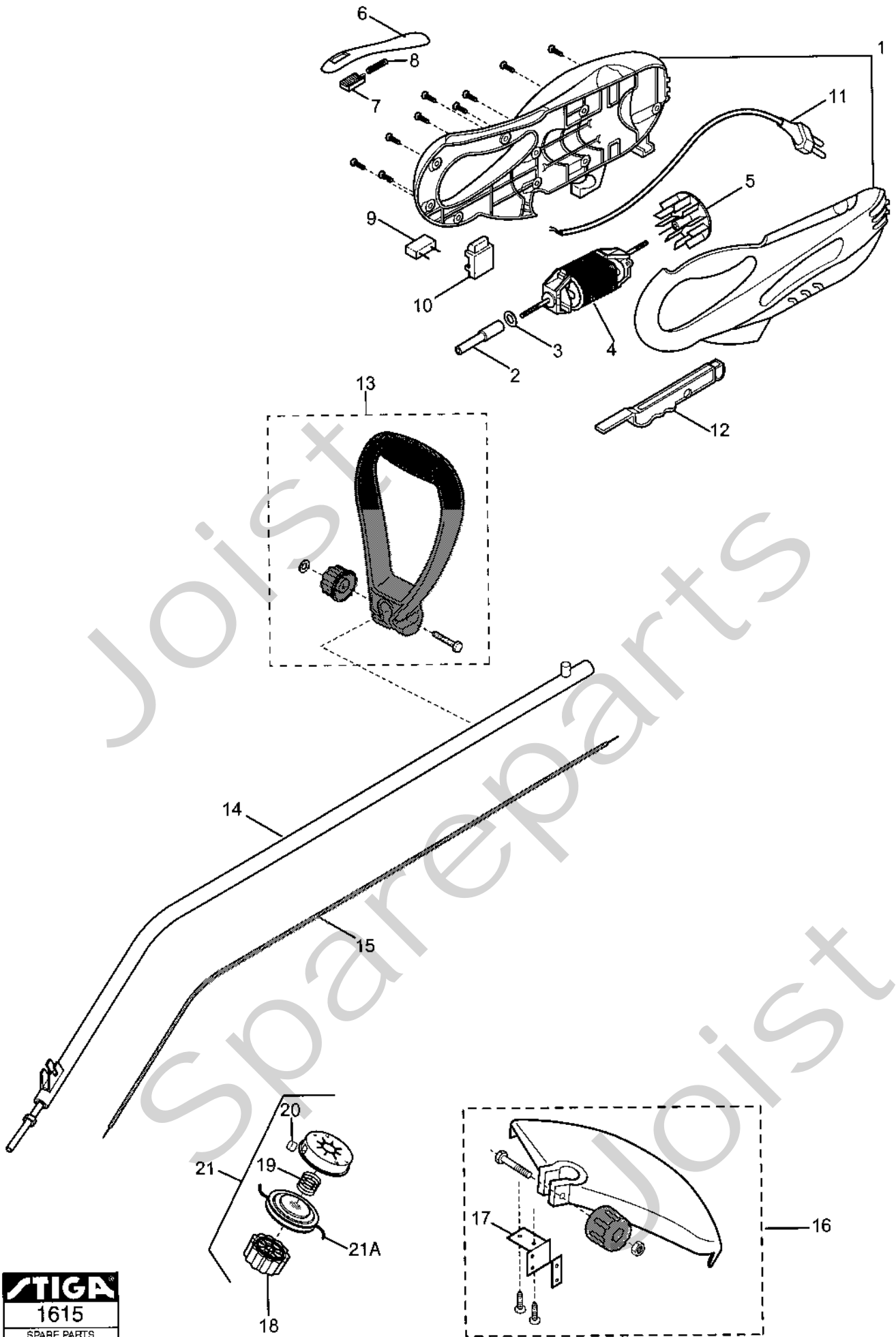


# Genuine Spare Parts

---



Joist  
Spareparts  
Joist



Utgåva Issue 2003-43		Bildnr Picture No 1615		ST 600 ELTRIMMER		ST 600 EL. TRIMMER		Sida Page 266	
Pos. Fig.	Antal/Quantity			Art nr Part No	Benämning	Description	Sats Kit	Anmärkning Notes	
	1160								
X 1	1			1911-3894-01	Hus kpl- gul .....	Housing assy- yellow .....			
X 2	1			1911-3879-01	Drivaxelförbindning .....	Drive shaft connector .....			
X 3	1			1911-3880-01	Anslutning .....	Connector .....			
X 4	1			1911-3881-01	Motor .....	Motor .....			
X 5	1			1911-3882-01	Fläkt .....	Fan .....			
X 6	1			1911-3883-01	Lock .....	Cover .....			
X 7	1			1911-3884-01	Tryckknapp .....	Button .....			
X 8	1			1911-3885-01	Fjäder .....	Spring .....			
X 9	1			1911-3886-01	Kondensator .....	Condensator .....			
X 10	1			1911-3887-01	Strömbrytare .....	Switch .....			
X 11	1			1911-3888-01	Anslutningssladd .....	Connecting cable .....			
X 12	1			1911-3889-01	Avtryckare .....	Trigger .....			
X 13	1			1911-3756-01	Handtag kpl .....	Handle assy .....			
X 14	1			1911-3890-01	Rör .....	Tube .....			
X 15	1			1911-3891-01	Flexaxel .....	Flexible shaft .....			
X 16	1			1911-3892-01	Stenskydd kpl .....	Stone guard assy .....		Inkl. pos 17	
X 17	1			1911-3893-01	• Kniv .....	• Blade .....			
X 18	1			1911-3757-01	• Raft .....	• Knob .....			
X 19	1			1911-3758-01	• Fjäder .....	• Spring .....			
X 20	2			1911-3759-01	• Trådhylsa .....	• Grommet .....			
X 21	1			1911-3760-01	Skärhuvud kpl .....	Cutterhead assy .....		Inkl. pos 18 - 20	
21A	1			1911-9007-04	Skärtråd (2.0 mm) .....	Cutting line (2.0 mm) .....		0.45 kg (130 m)	
21A	1			1911-9007-08	Skärtråd (2.0 mm) .....	Cutting line (2.0 mm) .....		15 m	