

Genuine Spare Parts

www.stiga.com

SB 425 H Model Year 2012

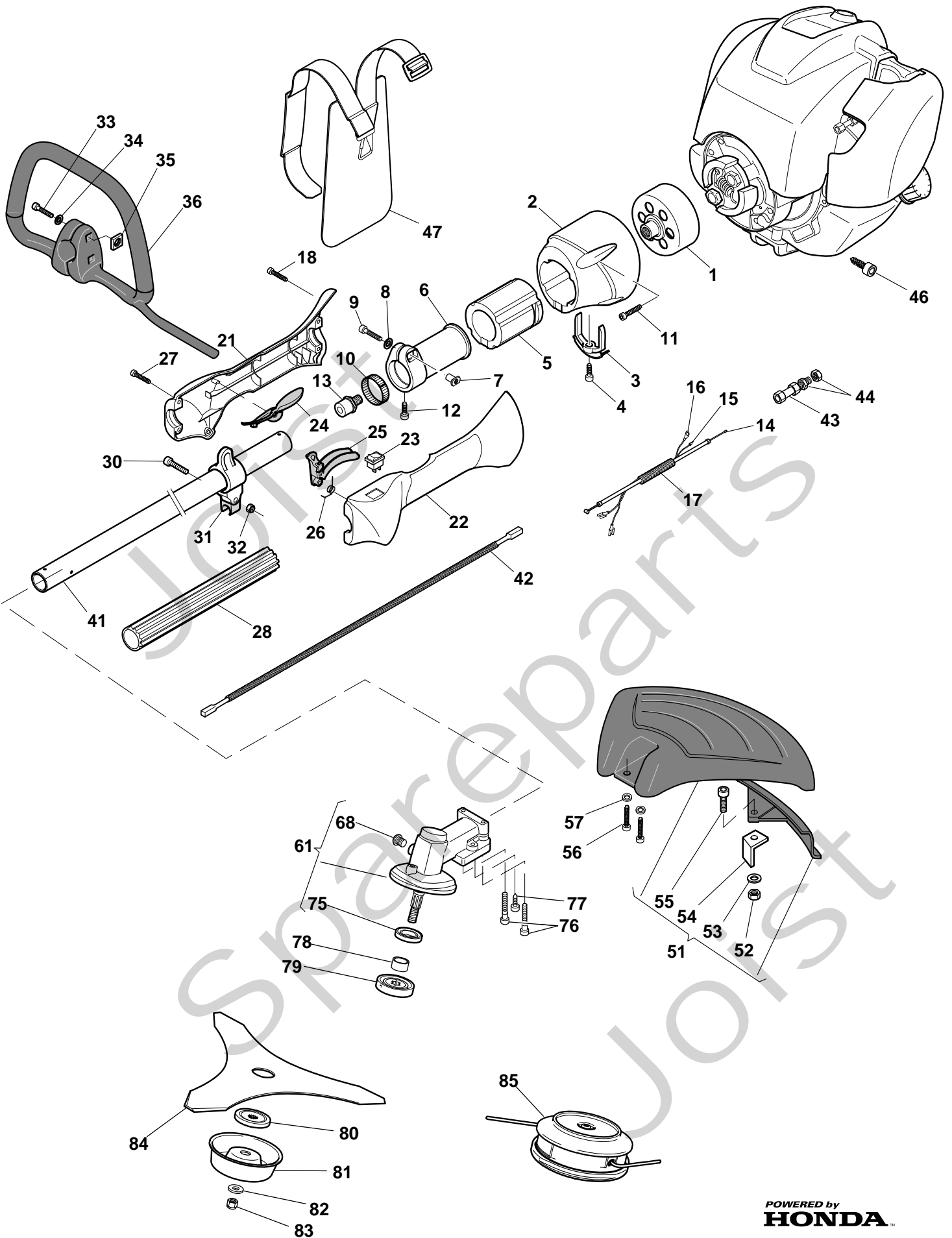
- Use GLOBAL GARDEN PRODUCT Genuine Spare Parts specified in the parts list for repair and/or replacement.
- The contents described in the parts list may change due to improvement.
- The drawings of the spare parts are only indicative and might not represent the part in question exactly.
- The indications "right" - "left" - "front" - "rear" refer to the position of the operator when using the machine.
- When placing orders of parts for repair and/or replacement, make sure that the illustrated parts list is the one applying to the machine's year of manufacture, as shown on the identification plate attached to the machine.

© Copyright 2012 Global Garden Products

All content is subject to copyright by Global Garden Products and may not be reproduced in whole or in part by any means, electronic or otherwise, without prior written approval.

THIS INFORMATION IS NOT INTENDED FOR SALE OR RESALE, AND THIS NOTICE MUST REMAIN ON ALL COPIES.

STIGA®





SB 425 H

| Pos. Fig. | Antal Quantity | Art No Part No | Benämning | Description | Anmärkning Notes |
|-----------|----------------|----------------|--------------------|---------------------------------|------------------|
| 1 | 1 | 83050004/0 | Kopplingshjul | Drum Ass'Y, Clutch | |
| 2 | 1 | 23782005/0 | Transmissionsstöd | Support Trasm.Assy | |
| 3 | 1 | 23232001/0 | Gaffel | Fork | |
| 4 | 1 | 2123100 | Skruv | Screw | |
| 5 | 1 | 23275000/0 | Hylsa | Grommet | |
| 6 | 1 | 23782003/0 | Stöd | Support | |
| 7 | 1 | 3643470 | Bussning | Bushing | |
| 8 | 1 | 2312020 | Bricka | Washer | |
| 9 | 1 | 2135040 | Skruv | Screw | |
| 10 | 1 | 3180560 | Reduktion | Reduction | |
| 11 | 4 | 2135150 | Skruv | Screw | |
| 12 | 1 | 2123100 | Skruv | Screw | |
| 13 | 1 | 23445258/0 | Lagernav | Bearing Hub | |
| 14 | 1 | 23066000/0 | Gaswire | Wire Ass.Y | |
| 15 | 1 | 23065000/0 | Kabel | Coil-Switch Cable | |
| 16 | 1 | 23065004/0 | Jordkabel | Earth Cable | |
| 17 | 1 | 23290000/0 | Kabelhöje | Wire Sheath | |
| 18 | 1 | 2123100 | Skruv | Screw | |
| 21 | 1 | 23700002/0 | Handtag-hö | Right Handgrip | |
| 22 | 1 | 23700003/0 | Handtag-vä | Left Handgrip | |
| 23 | 1 | 3210970 | Brytare | Stop Switch | |
| 24 | 1 | 23315055/0 | Säkerhetsspärr | Safety Lever | |
| 25 | 1 | 23315054/0 | Gasreglage | Throttle Lever | |
| 26 | 1 | 23430551/1 | Fjäder Arm Gaswire | Spring | |
| 27 | 4 | 2123030 | Skruv | Screw | |
| 28 | 1 | 23170000/0 | Distans | Spacer | |
| 30 | 1 | 2135040 | Skruv | Screw | |
| 31 | 1 | 23780000/0 | Batteristöd | Harness Support | |
| 32 | 1 | 2412030 | Mutter | Nut | |
| 33 | 2 | 2135050 | Skruv | Screw | |
| 34 | 2 | 2312090 | Bricka | Washer | |
| 35 | 2 | 2461030 | Mutter | Nut | |
| 36 | 1 | 23300001/0 | Handtag-främre | Front Handle | |
| 41 | 1 | 4252880 | Drivaxelrör | Transmission Pipe Ass.Y | |
| 42 | 1 | 4630101 | Transmissionsaxel | Transmission Shaft Ass.Y | |
| 43 | 1 | 3630600/1 | Kabe justering | Throttle Cable Adjuster | |
| 44 | 2 | 2412090 | Mutter | Nut | |
| 46 | 1 | 2135020 | Skruv | Screw | |
| 47 | 1 | 4253460 | Sele | Harness Mod.31 | |
| 51 | 1 | 3L8563570/1 | Skyddskåpa | Safety Cover Ass.Y (Incl.43-46) | |
| 52 | 1 | 2432040 | Mutter | Nut | |
| 53 | 1 | 2312150 | Bricka | Washer | |
| 54 | 1 | 3615000 | Kniv | Line Cutter | |
| 55 | 1 | 2135030 | Skruv | Screw | |
| 56 | 2 | 2135060 | Skruv | Screw | |
| 57 | 2 | 2312150 | Bricka | Washer | |
| 61 | 1 | 83820500/1 | Snäckväxel kpl | Gear Case Assy | |
| 68 | 1 | 2653460 | Skruv | Screw | |
| 75 | 1 | 3121180 | Tätningring | Oil Seal | |
| 76 | 2 | 2135050 | Skruv | Screw | |
| 77 | 1 | 2653090 | Skruv | Screw | |
| 78 | 1 | 3660680 | Hylsa | Collar | |
| 79 | 1 | 3641650 | Ringmutter-övre | Upper Ring Nut | |
| 80 | 1 | 3612650 | Ringmutter-nedre | Lower Ring Nut | |
| 81 | 1 | 3615300 | Stabilisator | Stabilizer | |
| 82 | 1 | 2321060 | Bricka | Washer | |
| 83 | 1 | 2452090 | Mutter | Nut | |
| 84 | 1 | 6031172 | Röjklina | 3 Teeth 25 Cm | |
| 85 | 1 | 23155000/0 | Skärhuvud kpl | 2 Hedges Nylon Head | |