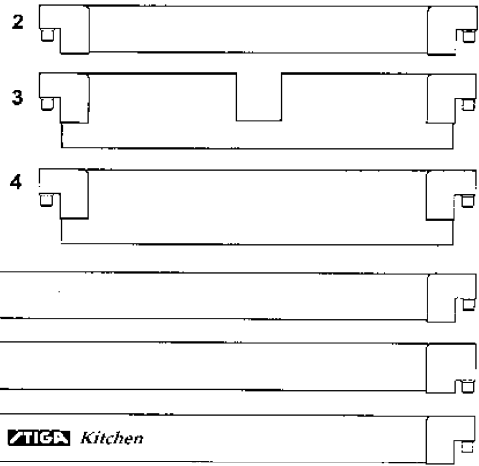
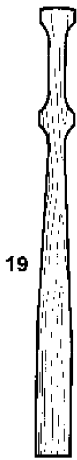


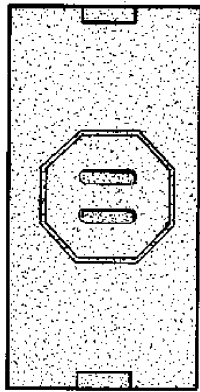
1



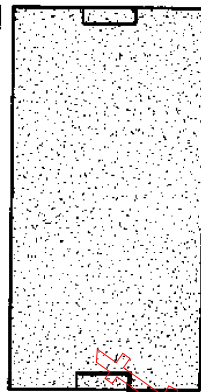
2
3
4
5
6
7



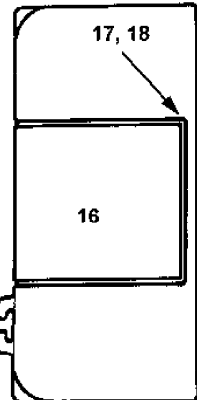
19



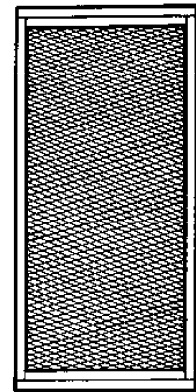
12



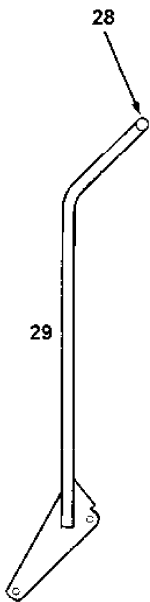
11



15

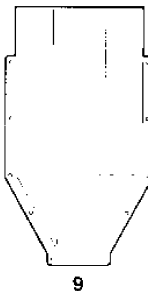


13

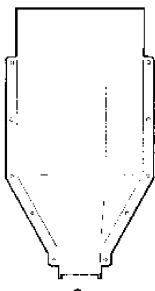


28

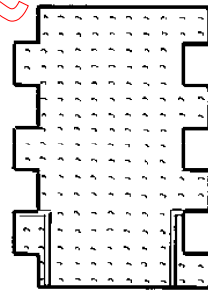
29



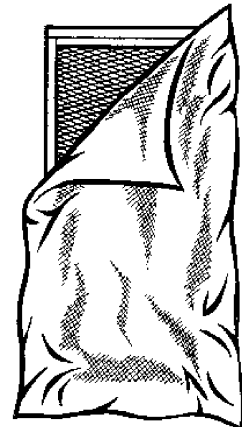
9



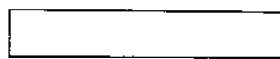
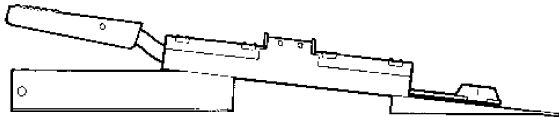
8



10



14



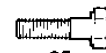
21



22



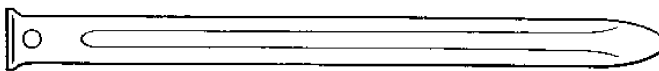
23



25



24



26



854

SPARE PARTS

Section: KITCHEN COMPOST

Pos.	Quantity	Spare part No	Description	Kit	Notes	New
	3111					
1	1	1717-0209-01	Net			
2	11	1717-0168-01	Board		L = 723 mm	
3	1	1717-0174-01	Board-front		L = 723 mm	
4	1	1717-0175-01	Board-rear		L = 723 mm	
5	10	1717-0168-03	Board		L = 1070 mm	
6	2	1717-0167-03	Board		L = 1070 mm	
7	2	1717-0171-03	Board (w.logo)		L = 1070 mm	
8	1	1717-0222-01	Hopper-rear			
9	1	1717-0221-01	Hopper-front			
10	10	1717-0211-01	Side insulator			
11	2	1717-0212-01	Top insulator			
12	1	1717-0213-01	Top insulator			
13	2	1717-0207-01	Earth filter			
14	2	1717-0218-01	Mat			
15	1	1717-0204-01	Cover			
16	1	1717-0205-01	Flap			
17	1	1717-0219-01	Shaft			
18	2	9675-0008-02	Locking washer			
19	1	1717-0208-01	Plunger			
20	1	1717-0206-01	Mounting kit		Ej ill/not ill.	
21	2	1717-0200-01	.Shaft			
22	8	9699-0060-02	.Flat washer		6,4 x 18 x 2	
22A	2	9699-0037-02	.Washer		13 x 24 x 2	
23	14	9747-0631-02	.Lock nut			
24	4	9897-0616-16	.Carriage bolt			
25	14	9997-0616-16	.Screw			
26	6	1717-0241-01	.Earth nail			
28	2	9403-0114-70	Handle			
29	1	1717-0185-01	Handlebar			

TEST