

NOTE: ALWAYS USE ORIGINAL EQUIPMENT PARTS.
Use of service/replacement parts other than original
equipment parts may void your warranty.

ALL UNNUMBERED
ITEMS ARE INTERCHANGEABLE
WITH OPPOSITE SIDE

344695A

FRONT CHASSIS ASSEMBLY

KEY NO.	PART NO.	DESCRIPTION	QTY
1	95413-821	BRACKET,HOOD RH	1
2	95414-821	BRACKET,HOOD LH	1
3	711606	SCREW, 5/16-18X.75	4
4	94907	DASH	1
5	711762	SCREW,1/4-14X.75	2
7	712480	WASHER, FLAT .475X.87 INSULATE	2
8	302628	SCREW, 1/4-20X .75	2
9	71067	WASHER, FLAT .286X .63X.065	4
10	73826	NUT, 1/4-20 REGHEXCTRLK	2
11	341569-860	ASSEMBLY, LOWER CONSOLE	1
11-1	95425	TOWER,LOWER DASH	1
11-2	95426	SUPPORT, STEERING	1
11-3	710264	SCREW, 1/4-20X .50	4
11-4	95406	ROD, DASH BRACE	1
11-5	710264	SCREW, 1/4-20X .50	2
12	711606	SCREW, 5/16-18X.75	4
15	94638-860	PANEL, ACCESS	1
16	711629	SCREW, 10-24X.500TRSEGI	2
17	94984	HOOD	1
18	302670	LENS, HEADLAMP	1
19	308492	FOIL,LENS DYNA HOOD REFLECTOR	1
21	301452	FOIL, HEAT REFLECTOR	4
22	711856	PIN,CLEVIS .375DIA.X .81 LG	2
23	711682	PIN,HAIR	2
24	712480	WASHER,FLAT-INSULATE	4
25	95404	BUSHING,STEERING SHAFT	1
	712561	OPERATOR'S MANUAL (NOT SHOWN)	1

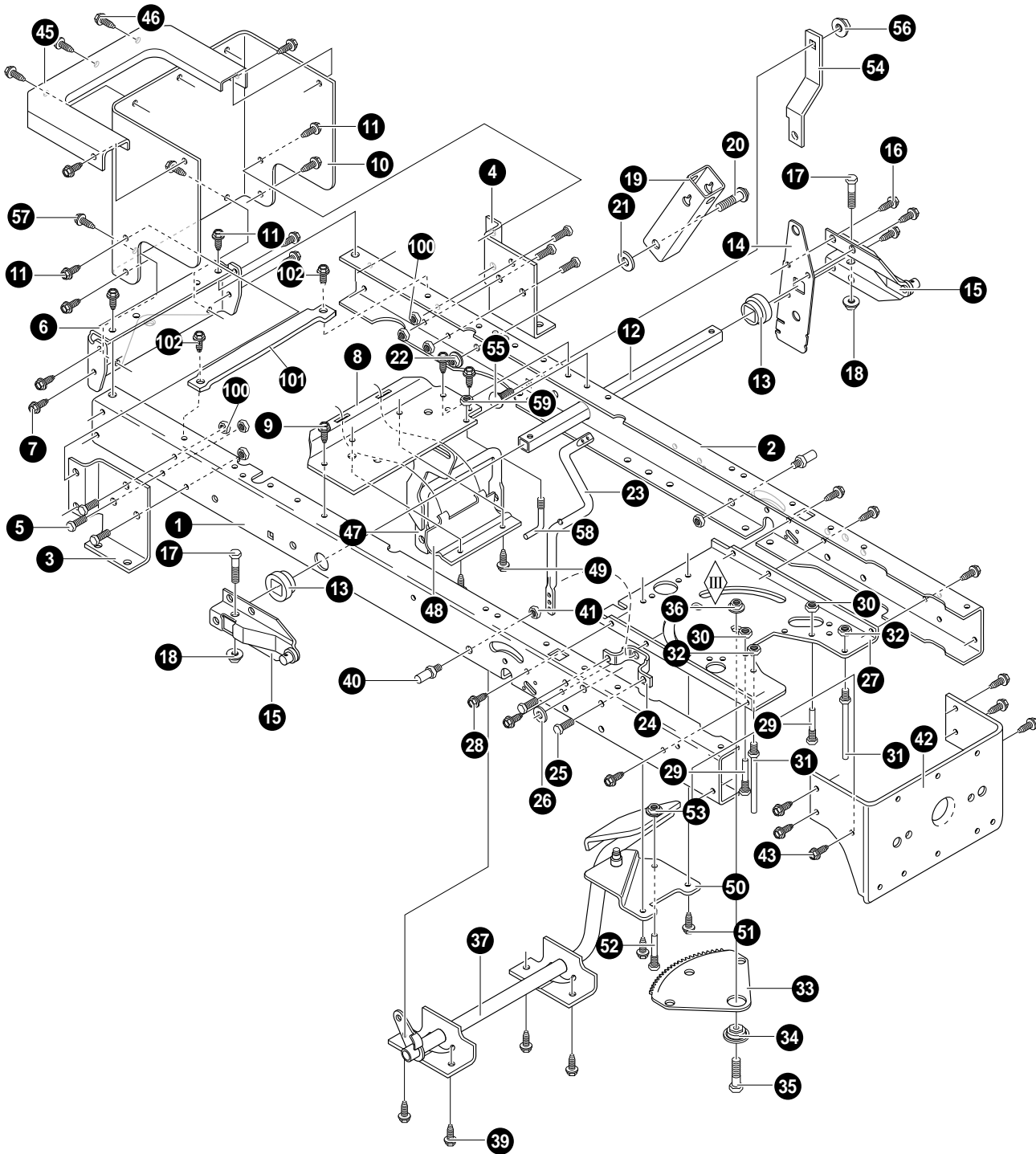
NOTE: ALWAYS USE ORIGINAL EQUIPMENT PARTS.
Use of service/replacement parts other than original
equipment parts may void your warranty.

ALL UNNUMBERED
ITEMS ARE INTERCHANGEABLE
WITH OPPOSITE SIDE

345046A

REAR CHASSIS ASSEMBLY

KEY NO.	PART NO.	DESCRIPTION	QTY
1	94628-860	SEAT DECK, LARGE	1
4	690424	CONTAINER, BATTERY	1
5	711642	SCREW, 1/4-20X .63	2
6	94886	PLATE , LIFT DETENT LG.	1
7	-	NOT USED ON THIS UNIT	
8	711629	SCREW,LIFT DETENT LOCKOUT	2
9	94154-860	SUPPORT, SEAT	1
10	95294	ZINC HINGE SEAT PIVOT	1
11	711627	NUT, PUSH CAP	2
12	710136	SPRING, COMPRESS 4.57LG X 1.17	1
13	711610	BOLT,SHOULDER 1/4-20	1
14	95293	WASHER CUP	1
15	302635	NUT, 1/4-20 CNTRLK	1
16	710109	SPRING, COMPRESS 2.43LG 164X30	2
17	711606	SCREW, 5/16-18X.75	2
20	711747	BOLT, WING 5/16-18X.50	2
21	711644	WASHER, FLAT.344X .62X.06	2
22	94491	COVER, DETENT W/CUP HOLDER	1
24	711671	SCREW, 1/4-15X.44/.53	3
25	94495	COVER, HYDRO	1
26	711671	SCREW, 1/4-15X.44/.53 HILO	2
27	71067	WASHER, FLAT .281X.63X.065	1
28	20107	CAP, HUB/SEAT SPRING	2
29	71067	WASHER, FLAT .281X.63X.065	2
30	94057	SPRING-LEAF	1
31	711592	SCREW, 1/4-20X .50 WAHHTAP	2
32	94153-860	BRACKET, PIVOT SEAT	1
33	711606	SCREW, 5/16-18X.75	4
34	711634	NUT, 5/16-18 WDFLLK	4
35	314159	NUT, #10-32	2



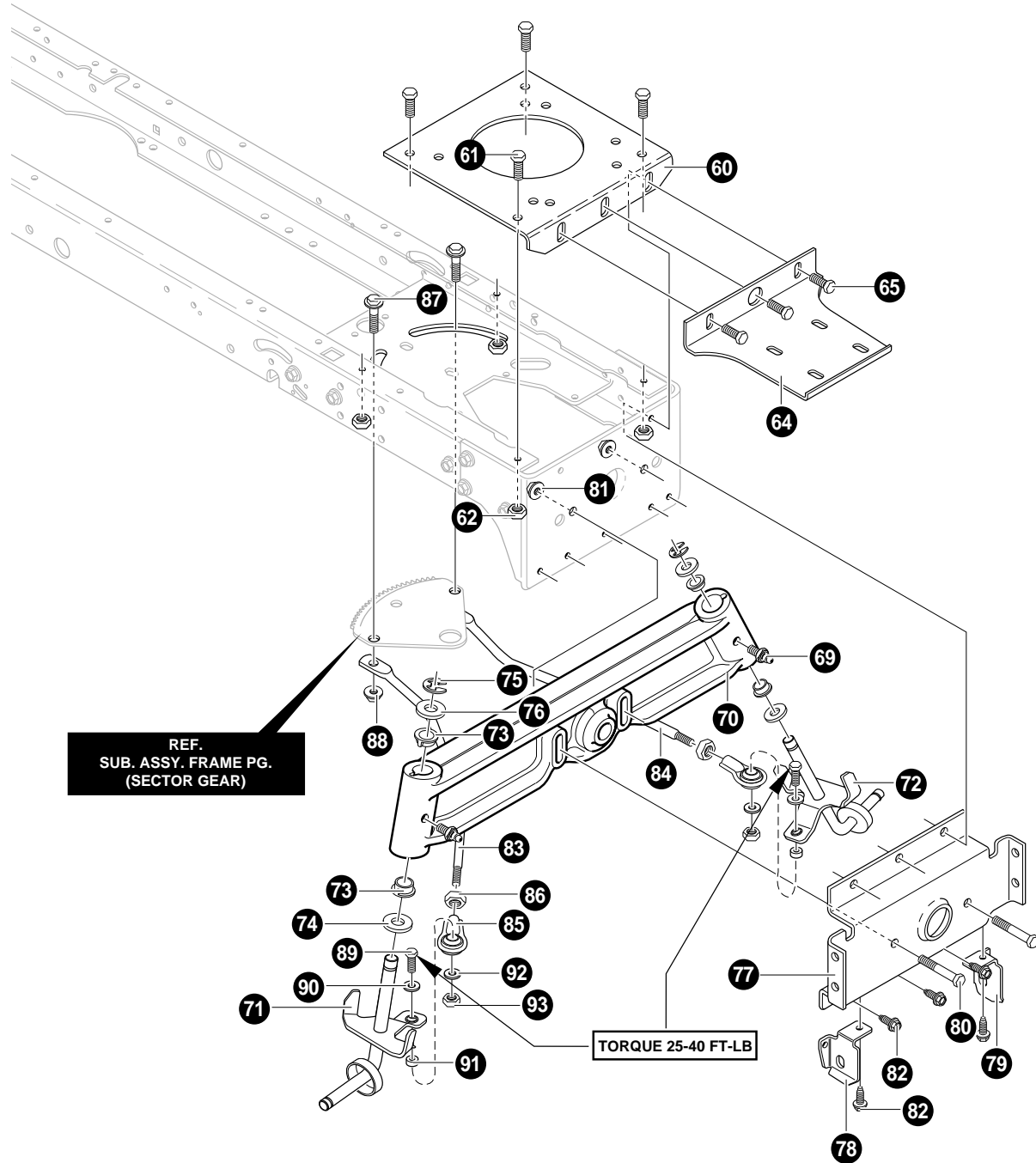
NOTE: ALWAYS USE ORIGINAL EQUIPMENT PARTS.
Use of service/replacement parts other than original equipment parts may void your warranty.

ALL UNNUMBERED
ITEMS ARE INTERCHANGEABLE
WITH OPPOSITE SIDE

343670D

FRAME ASSEMBLY

KEY NO.	PART NO.	DESCRIPTION	QTY
1	95110	RAIL, FRAME RH	1
2	95111	RAIL, FRAME LH	1
3	94184	BRACKET, TRANSAXLE RH	1
4	94185	BRACKET, TRANSAXLE LH	1
5	710079	SCREW, 5/16-18X.75	6
6	94002	HITCH PLATE	1
7	710079	SCREW, 5/16-18X.75	4
8	94431	BRACKET, IDLER	1
9	710079	SCREW, 5/16-18X.75	3
10	690218	PLATE, REAR	1
11	710079	SCREW, 5/16-18X.75	6
12	94063	TUBE, LIFTER	1
13	94065	BUSHING - LIFT TUBE	2
14	94030	PLATE-LIFT ARM	1
15	94180	ASSEMBLY, LIFT ARM LEVER	2
16	710106	SCREW,5/16-12X.50	3
17	710310	SCREW, 5/16-24X1.25	2
18	710080	NUT, 5/16-24	2
19	94015	BRACKET, PIVOT	1
20	710000	BOLT, .562X1.563	1
21	710130	WASHER, FLAT	1
22	710140	NUT,3/8-16	1
23	94019	CRANK, PTO	1
24	94005	BRACKET, BELL CRANK	1
25	710079	SCREW, 5/16-18X.75	2
26	120395	WASHER, FLAT	1
27	690504	PLATE,STEERING	1
28	710079	SCREW, 5/16-18X.75	6
29	93349	ZINC SCREW GUIDE 5/16-18	2
30	710204	NUT, 5/16-18	2
31	94066	SCREW - GUIDE	2
32	710204	NUT, 5/16-18	2
33	94121	GEAR, SECTOR	1
34	94123	BEARING, SECTOR GEAR	1
35	710312	SCREW, 5/16-18X1.00	1
36	710105	NUT, 5/16-18	1
37	94632	ASSEMBLY, CLUTCH/BRAKE PEDAL	1
39	710079	SCREW, 5/16-18X.75	4
40	94067	PIN,THREADED SHOULDER	2
41	45171	NUT, 3/8-16	2
42	94013	BRACKET, HANGER REAR	1
43	710079	SCREW, 5/16-18X.75	6
45	94186	TOP,REAR PLATE LARGE SEAT DECK	1
46	710196	SCREW, 10-24X.50	5
47	94791	YOKE ASSEMBLY-TRUNNION PEER	1
48	94434	CLAMP, TRUNNION PIVOT	1
49	710079	SCREW, 5/16-18X.75	2
50	94409	ASSY, IDLER INTERMEDIATE	1
51	710708	BOLT, 5/16-18X.50	2
52	93349	SCREW GUIDE 5/16-18	1
53	710204	NUT, 5/16-18	1
54	94433	TORQUE STRAP-LEFT	1
55	57072	BOLT, 5/16-18X.63	1
56	710205	NUT, 5/16-18 WDFLLK	1
57	710199	SCREW 3/8-16X1.25	2
58	94781	SCREW-GUIDE	1
59	710204	NUT, 5/16-18	1
100	710205	NUT, 5/16-18 WDFLLK	6
101	690482	BRACKET, BATTERY SUPPORT	1
102	710079	SCREW 5/16-18X.75 HHWATAP	2



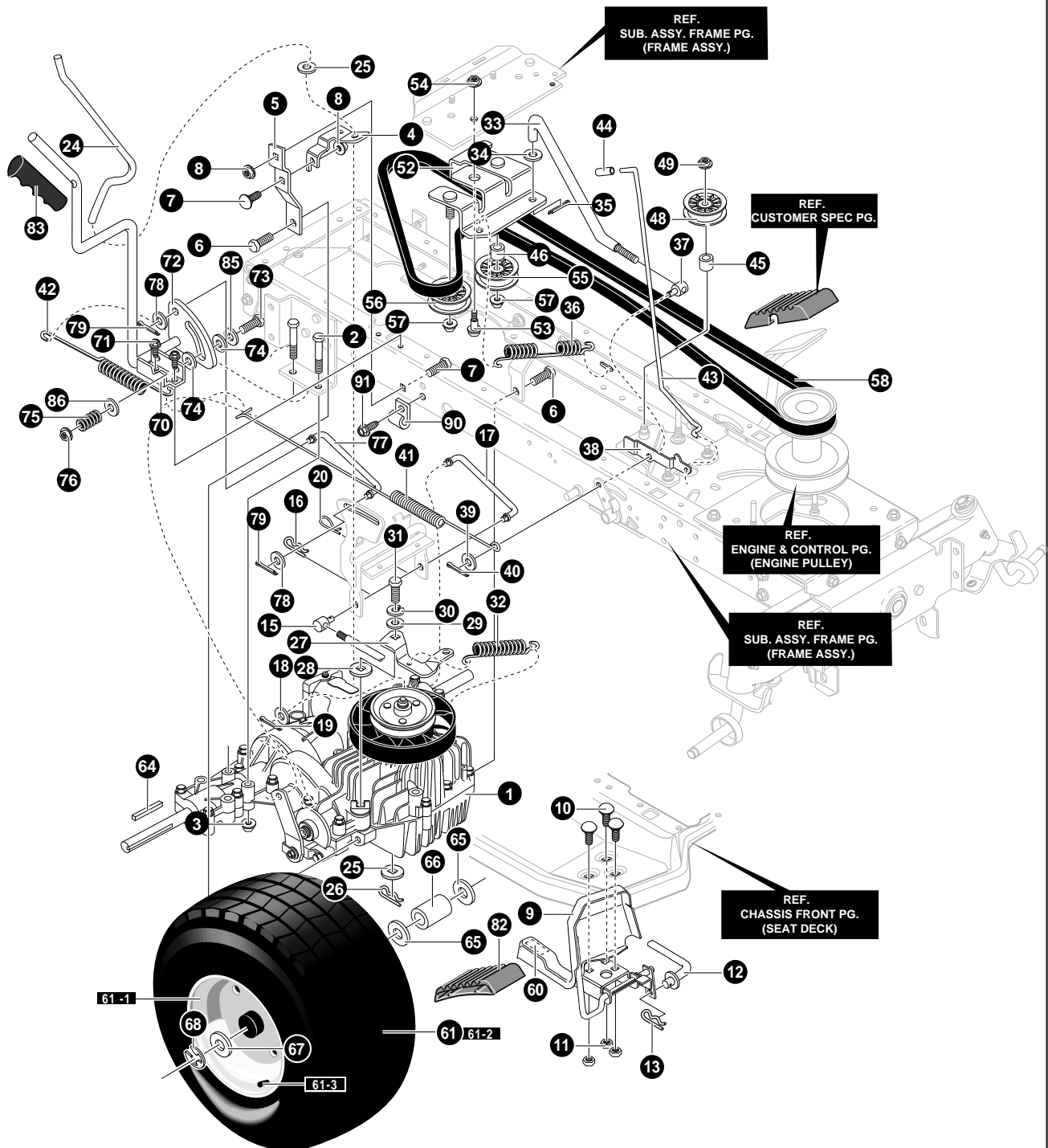
NOTE: ALWAYS USE ORIGINAL EQUIPMENT PARTS. Use of service/replacement parts other than original equipment parts may void your warranty.

ALL UNNUMBERED ITEMS ARE INTERCHANGEABLE WITH OPPOSITE SIDE

343670D

FRAME ASSEMBLY

KEY NO.	PART NO.	DESCRIPTION	QTY
60	94006	PLATE, ENGINE	1
61	710079	SCREW, 5/16-18X.75	4
62	710205	NUT, 5/16-18 WDFLLK	4
64	94306	BRACKET, 14.5-20	1
65	710079	SCREW, 5/16-18X.75	3.
69	706	ZERK, GREASE FITTING	2
70	343710	AXLE ASSEMBLY	1
71	94732	SPINDLE,RH	1
72	94733	SPINDLE LH,WELD ASSEMBLY	1
73	92527	BEARING, SPINDLE	4
74	710129	WASHER	2
75	710103	E-RING	2
76	710088	WASHER, FLAT .765X1.81X.059	2
77	94007	HANGER, AXLE	1
78	94026	HANGER DECK RH	1
79	94027	HANGER DECK LH	1
80	710081	SCREW, 5/16-24X2.75	2
81	710080	NUT, 5/16-24	2
82	710079	SCREW, 5/16-18X.75	5
83	94767	DRAG LINK RH	1
84	94768	DRAGLINK, LH	1
85	94766	TIE ROD END 1/2-20	2
86	7058	NUT, 1/2-20 HXJAM	2
87	710440	BOLT, HSH (9X57)	2
88	710140	NUT, 3/8-16 HWDFFLLK MACK 15X84	2
89	310364	BOLT, .500X1.18 HSH 3/8-16	2
90	711672	WASHER, FLAT .515X1.37X.119	2
91	319618	SPACER, SLEV .515X.70X.	2
92	301188	WASHER, FLAT .378X.75X.08	2
93	1499	NUT, 3/8-16 REGHXCTRLK	2



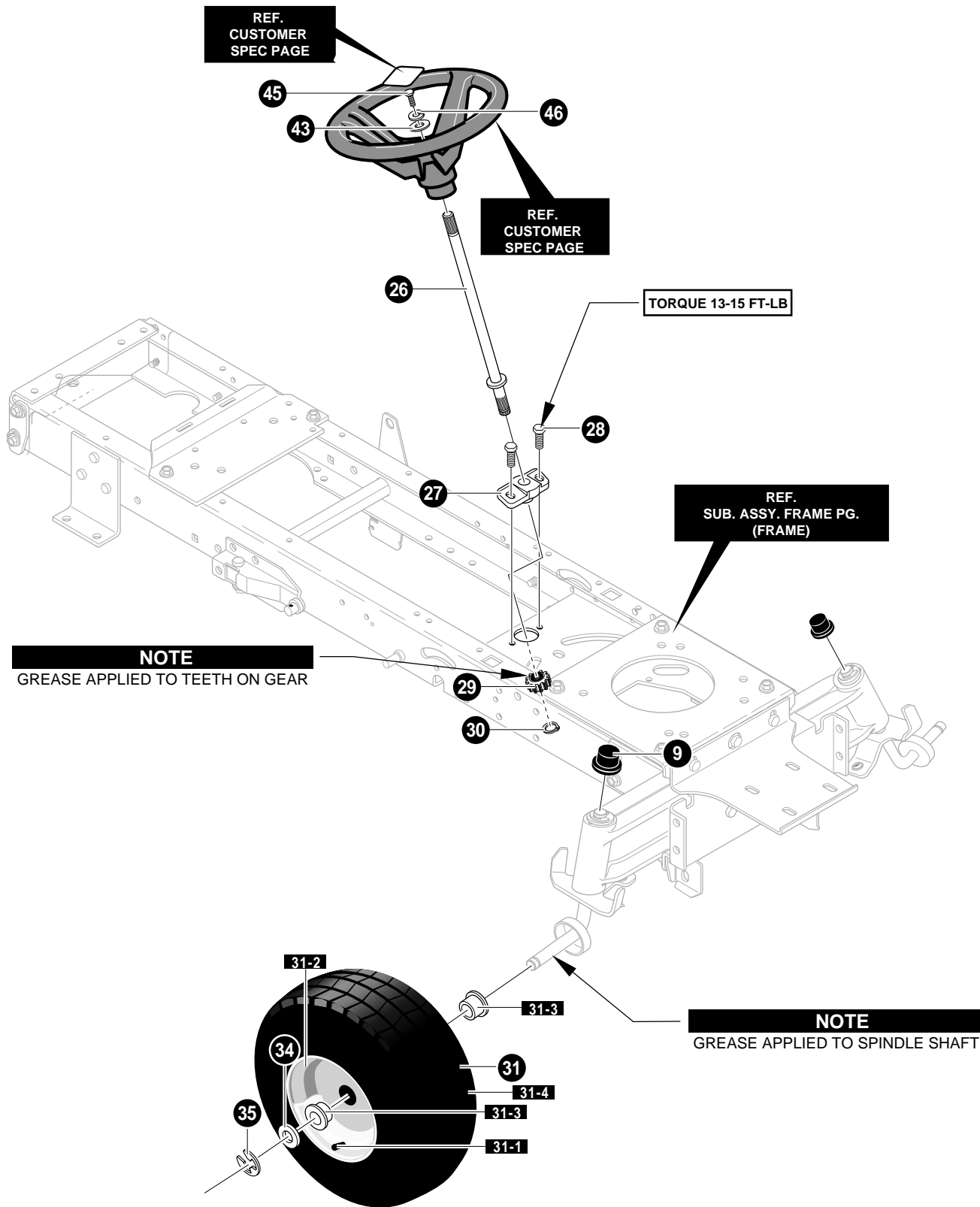
NOTE: ALWAYS USE ORIGINAL EQUIPMENT PARTS.
Use of service/replacement parts other than original equipment parts may void your warranty.

ALL UNNUMBERED
ITEMS ARE INTERCHANGEABLE
WITH OPPOSITE SIDE

MOTION DRIVE ASSEMBLY

KEY NO.	PART NO.	DESCRIPTION	QTY
1	*	HYDRO, PEERLESS	1
2	711669	SCREW, 5/16-18X2.50	4
3	711634	NUT, 5/16-18 WDFLLK	4
4	94429-821	BRACKET, DISCONNECT	1
5	94432-821	TORQUE STRAP -RIGHT	1
6	710268	SCREW, 5/16-18X.75	2
7	711661	BOLT, 5/16-18X .63	2
8	711634	NUT,5/16-18 WDFLLK	2
9	690013-821	ASSEMBLY, PEDAL	1
10	711688	BOLT, 5/16-18X .75	3
11	710026	NUT, 5/16-18 HEXWDFLLK WHIZ	3
12	95278	ZINC ROD,PEDAL LINK	1
13	711676	HAIR PIN	1
15	711594	ADJUSTING NUT 1/2-13	1
16	711682	PIN,HAIR.38 DIAx1.64LG	1
17	95279	ZINC, ROD HYDRO LINK	1
18	711617	WASHER, FLAT	1
20	711676	PIN, HAIR	1
24	95298	ROD, DISCONNECT	1
25	711644	WASHER, FLAT.344X .62X.06	2
26	71081	PIN,COTTER.090DIA.X.75	1
27	95299	ZINC ARM, DISCONNECT	1
28	710346	WASHER, .388,393SQX1.00X.065	1
29	710657	WASHER, FLAT .256X .75X.130Z	1
30	710249	WASHER	1
31	710345	SCREW, 1/4-28X .750HHCNYLK	1
32	710330	SPRING, EXTENSION	1
33	95297	ROD, CLUTCH	1
34	711644	WASHER, FLAT.344X .62X.06	1
35	71081	PIN,COTTER.090DIA.X.75	1
36	710707	SPRING,CLUTCH VST205 HYDRO NLT	1
37	711596	NUT, ADJUSTING	1
38	95290	ZINC LATCH, PARK BRAKE	1
39	711623	WASHER, FLAT.406X .81X16	1
40	71081	PIN,COTTER.090DIA.X.75	1
41	710333	SPRING, EXTENSION 23.10LG	1
42	710353	SPRING, TENS 3.984X .530	1
43	690046	PARK BRAKE CONTROL ROD	1
44	91079	GRIP	1
45	690369	SPACER, 1/2 TO 17MM	1
46	690369	SPACER, 1/2 TO 17MM	1
48	690409	PULLEY, IDLER 2.75 DIA	1
49	711920	NUT, 3/8-16 HWDFLLK MACK	1
50	690369	SPACER, 1/2 TO 17 MM	1
52	95305	ZINC ASM.BRACKET IDLER	1
53	711613	BOLT.50X.75 HSSH 3/8-16	1
54	711622	NUT, 3/8-16	1
55	690409	PULLEY, IDLER 2.75	1
56	91178	PULLEY, V-IDLER 3"	1
57	711920	NUT, 3/8-16 HWDFLLK MACK	2
58	710531	BELT, MOTION DRIVE HYDRO	1
59	94516	PAD, SPEED CTRL PEDAL	1
60	93249	PAD, TOE SANDPAPER	1
61	692511	TIRE & RIM	2
61-1	338512	VALVE STEM	2
61-2	338524	RIM	2
61-3	338525	TIRE 20X8-8	2
62	690369	SPACER 1/2 TO 17MM	1
64	52928	KEY, SQUARE .187SQX2.25LG	2
65	711648	WASHER, FLAT .760X1.25X.065	4
66	95274	SPACER.87X1.78	2
67	711758	WASHER, FLAT .765X1.81X.059	2
68	710103	E-RING .574IDX.050/.750SH 11X3	2
70	94793-821	BRACKET, MOUNT HAND CONTROL	1
71	711606	SCREW, 5/16-18X.75	2
72	95306	ASM., LEVER HAND CRUISE	1
73	711599	BOLT, .375X1.59 HSSH 5/16-18X.5	1
74	314944	WASHER, FRICTION	2
75	335689	SPRING-COMP	1
76	711634	NUT, 5/16-18 WDFLLK	1
77	690045	LINK, CRUISE CONTROL	1
78	711644	WASHER, FLAT .34X.62X.06	2
79	71081	PIN, COTTER	2
82	94516	PAD, SPEED CTRL PED	1
83	94507	GRIP, 7/16'	1
85	711589	WASHER, FLAT .390x1.25x.119	1
86	710083	WASHER, FLAT .391X1.00X.083	1
90	717742	RETAINER, .31IDX.62X.03 WIRE	1
91	711606	SCREW 5/16-18X.75 HHWATAP	1

* CONTACT YOUR LOCAL TRANSAXLE DEALER



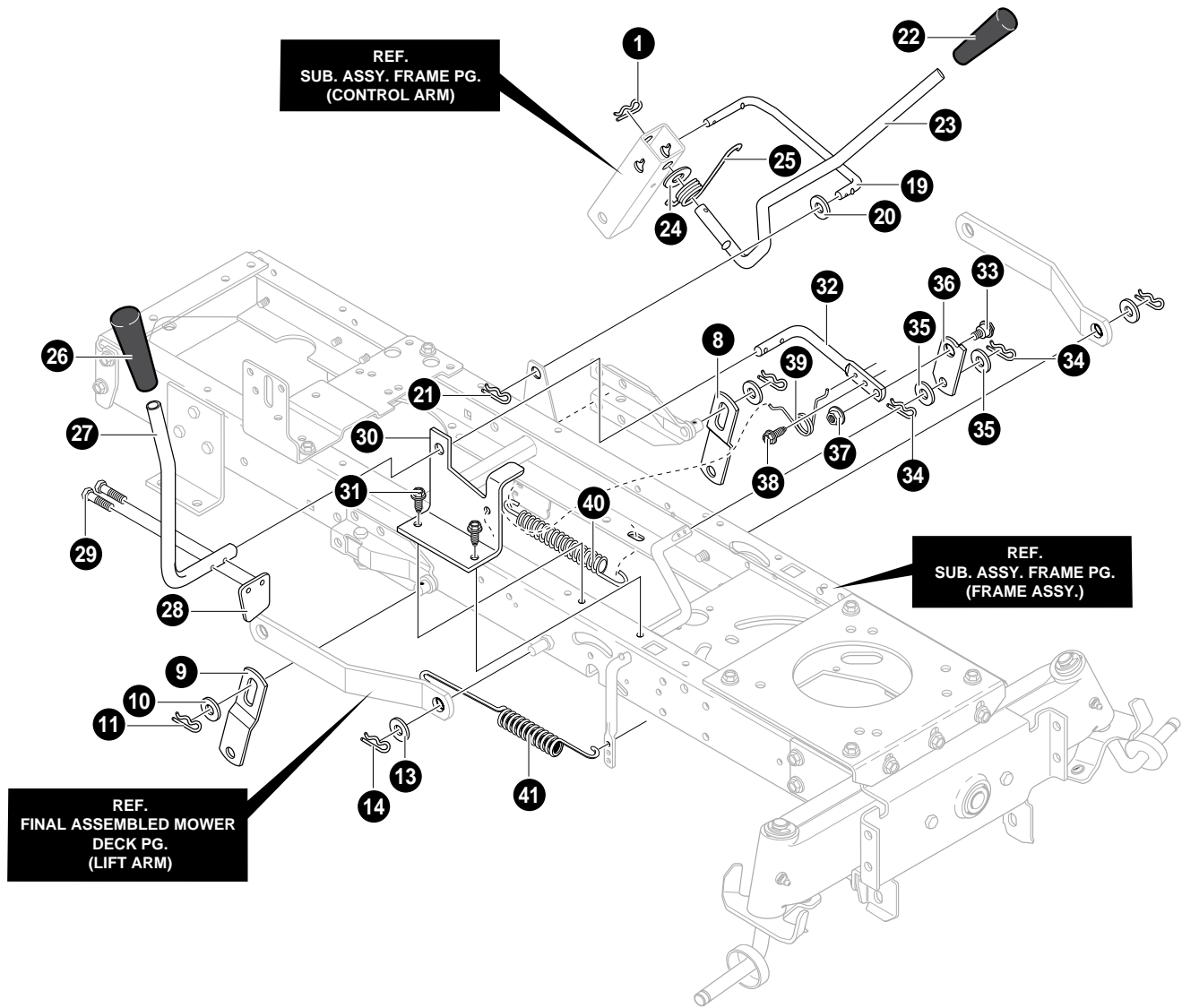
NOTE: ALWAYS USE ORIGINAL EQUIPMENT PARTS. Use of service/replacement parts other than original equipment parts may void your warranty .

ALL UNNUMBERED ITEMS ARE INTERCHANGEABLE WITH OPPOSITE SIDE

344787A

STEERING ASSEMBLY

KEY #	PART #	DESCRIPTION	QTY
9	94618	DUST HUB CAP	2
26	94520	SHAFT, STEERING BOLT-ON	1
27	94124	BEARING-LOWER	1
28	711606	SCREW, 5/16-18X.75	2
29	94122	GEAR PINNION	1
30	710102	RING, RET E	1
31	692641	TIRE&RIM, 15X6.0X6	2
31-1	338512	VALVE STEM	2
31-2	338517	RIM	2
31-3	338513	BEARING	2
31-4	338514	TIRE 15X6X6	2
34	711758	WASHER, FLAT .765X1.81X.059	2
35	710103	E-RING .574IDX.050/.750SH 11X3	2
43	711720	WASHER, FLAT .391X1.25X.115 YZ	1
45	711719	SCREW, 1/4-20X .75	1
46	710249	WASHER, (18X32)	1



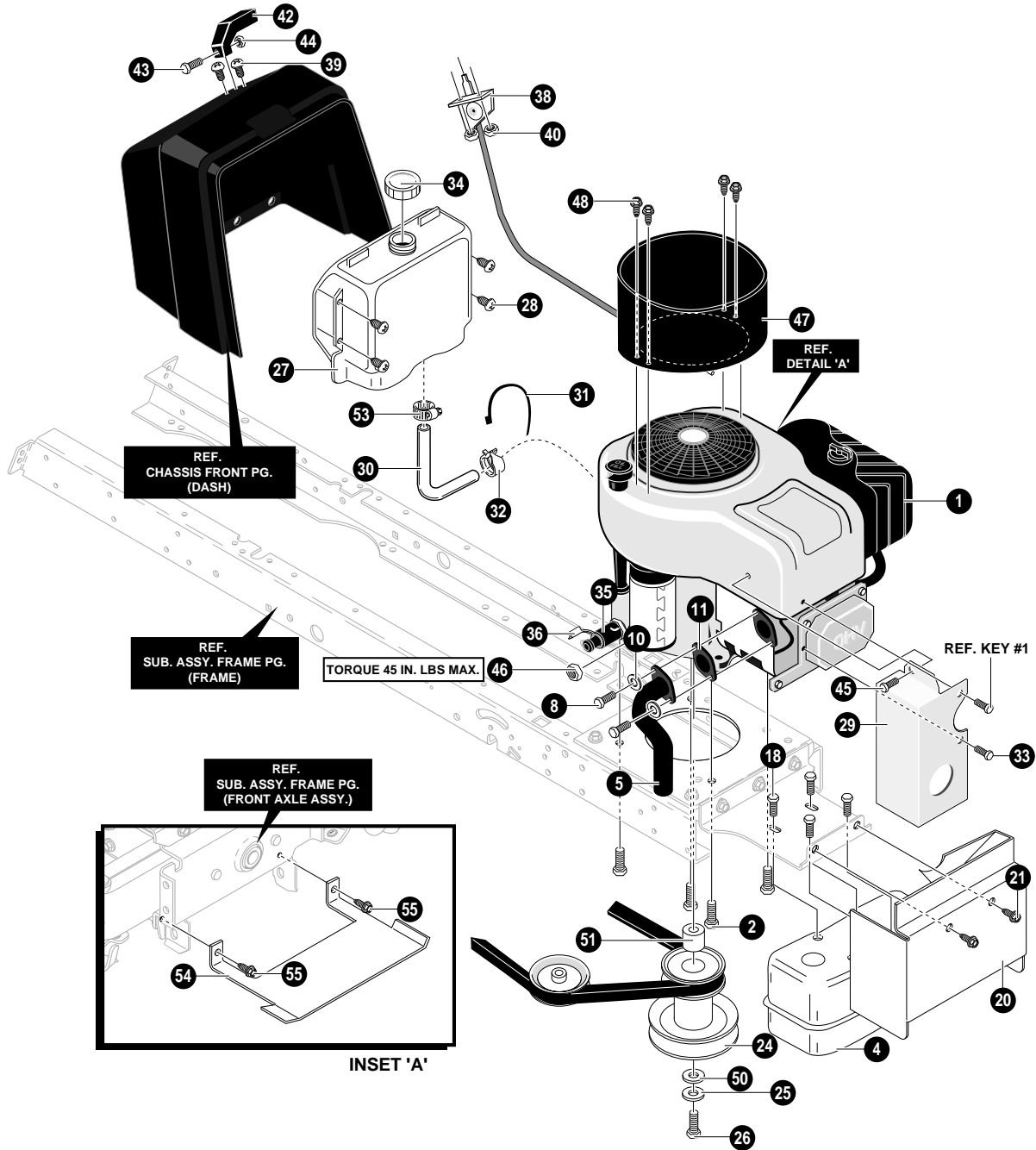
NOTE: ALWAYS USE ORIGINAL EQUIPMENT PARTS.
Use of service/replacement parts other than original
equipment parts may void your warranty.

ALL UNNUMBERED
ITEMS ARE INTERCHANGEABLE
WITH OPPOSITE SIDE

344308A

MOWER SUSPENSION ASSEMBLY

KEY NO.	PART NO.	DESCRIPTION	QTY
1	711676	PIN, HAIR	1
8	94611-821	LINK, LIFT LH	1
9	94053-821	LINK, LIFT RH	1
10	711617	WASHER, FLAT	2
11	711676	PIN, HAIR	2
13	711617	WASHER, FLAT	2
14	711676	PIN, HAIR	2
19	95285	LINK LIFT HANDLE	1
20	711617	WASHER, FLAT	1
21	711676	PIN, HAIR	1
22	94506	GRIP, LIFT	1
23	95296	HANDLE, LIFT	1
24	711616	WASHER, FLAT.550X1.00X11	1
25	710111	TORSION SPRING .657LG (166X40)	1
26	94505	GRIP, PTO 5/8"	1
27	690126	PTO HANDLE	1
28	95284	ZINC PADDLE, SWITCH	1
29	711621	SCREW, THD FORM.246X1.050LG	2
30	94018-821	BRACKET, PTO	1
31	780055	SCREW, 5/16-18X.50	2
32	95283	ZINC LEVER, PTO	1
33	711613	BOLT.50X.75HHSH3/8-16	1
34	711659	PIN, HAIR .072 DIAX1.13LG	2
35	711615	WASHER, FLAT.518X.87X16	2
36	95282	LINK PTO	1
37	711622	NUT, 3/8-16	1
38	711606	SCREW, 5/16-18X.75	1
39	710141	TORSION SPRING .33LG (166X39)	1
40	710311	SPRING, TENSION	1
41	710208	EXTENSION SPRING (165X119)	1



NOTE: ALWAYS USE ORIGINAL EQUIPMENT PARTS.
 Use of service/replacement parts other than original
 equipment parts may void your warranty.

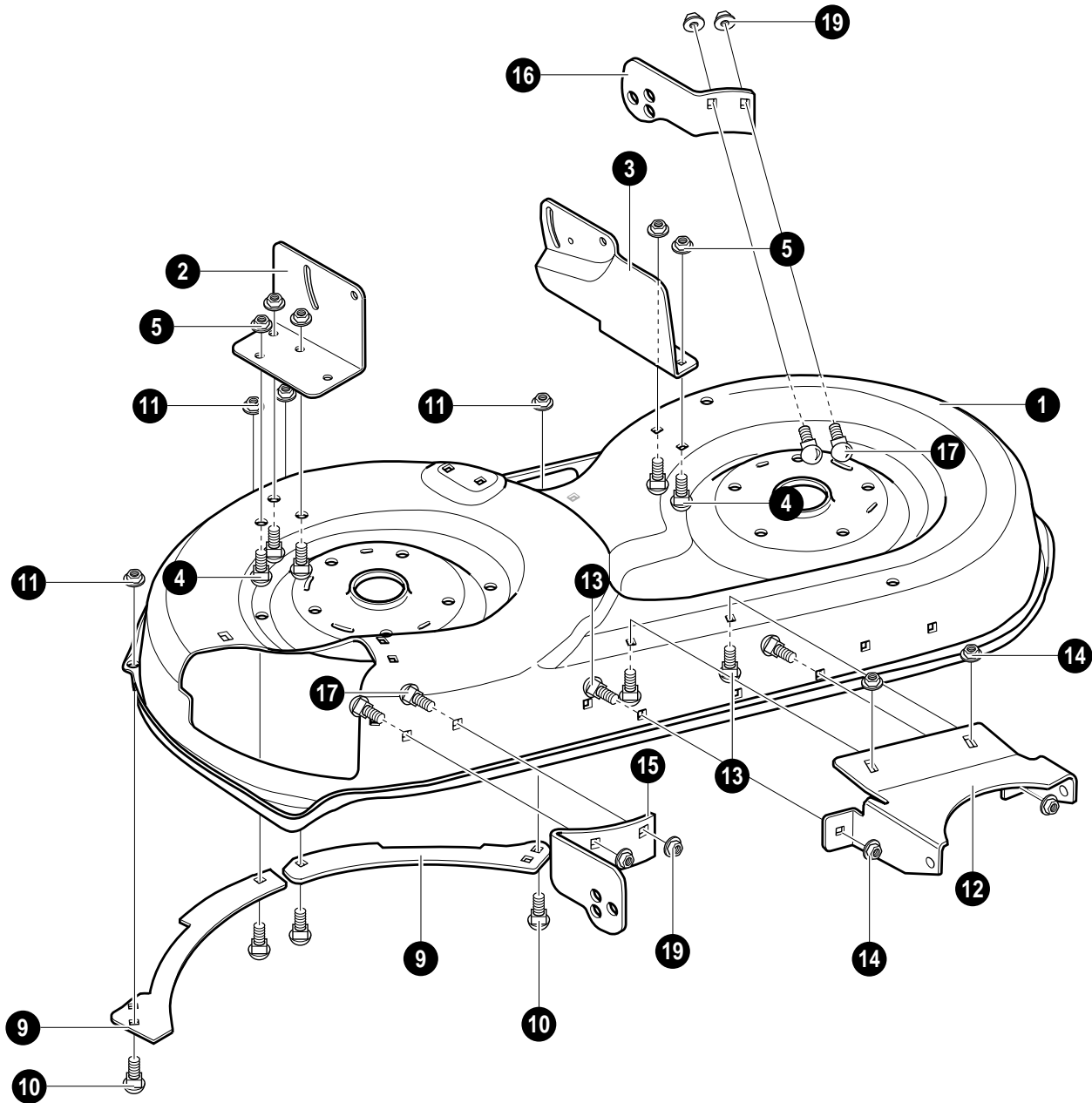
ALL UNNUMBERED
 ITEMS ARE INTERCHANGEABLE
 WITH OPPOSITE SIDE

344886A

ENGINE & CONTROL ASSEMBLY

KEY NO.	PART NO.	DESCRIPTION	QTY
1	*	ENGINE 17HP	1
2	710199	SCREW,3/8-16X1.25 WAHHSPTAP	4
4	94654	MUFFLER, SINGLE-CYLINDER	1
5	94657	EXHAUST TUBE B&S	1
8	313676	SCREW, 5/16-18X .75 HHC	2
10	313679	WASHER, HVSPTLK .328X.60X.09	2
11	91309	GASKET, MUFFLER	1
18	711642	SCREW, 1/4-20X .63 WAHHTAP	4
20	95439-821	SHIELD,HEAT LOWER FRONT	1
21	711606	SCREW, 5/16-18X.75	2
24	95259	PULLEY, STACK ASS'Y	1
25	120383	WASHER, REGSPTLK.459X.78X.12	1
26	710248	SCREW, 7/16-20NF1.50HHC	1
27	314991	TANK, FUEL 2-GALLON	1
28	711741	SCREW, #12 X .50 PHPNHTAP	4
29	333772-821	HEAT SHIELD, SIDE	1
30	42258	TUBING, .25X.50X BULK GAS LINE	12"
31	57444	TIE, CABLE BLACK NYLON 5.62L	1
32	336890	CLAMP, HOSE SCREW TYPE	1
33	711592	SCREW, 1/4-20X .50	1
34	300304	CAP, GAS - 2.0 THROAT	1
35	325547	OIL DRAIN VALVE ASSEMBLY	1
36	327422	CAP,OIL DRAIN VALVE	1
38	95370	THROTTLE CONTROL	1
39	711749	SCREW, 10-24X.63 PHPNMA	2
40	711754	NUT, #10-24	2
42	94931	KNOB,THROTTLE CONTROL	1
43	711750	SCREW, #8-32X .38 PHPNMA	1
44	711748	NUT, #8-32 REGHX	1
45	711593	SCREW, 10-16X .50	1
46	711601	NUT, 1/4-20 REGHXJAM	1
47	690059	PLENUM, H15, 17HP INTEK	1
48	710245	SCREW, #8-16X .38	4
50	710247	WASHER, FLAT .480X1.00X.25	1
51	93077	SPACER, SLEEVE	1
53	47345	CLAMP,HOSE SCREW TYPE	1
54	95192-821	SHIELD, ANTI-DEHYDRATION DEFLEC	1
55	711606	SCREW, 5/16-18X.75HHWATAP	2

* SEE ENGINE MANUAL



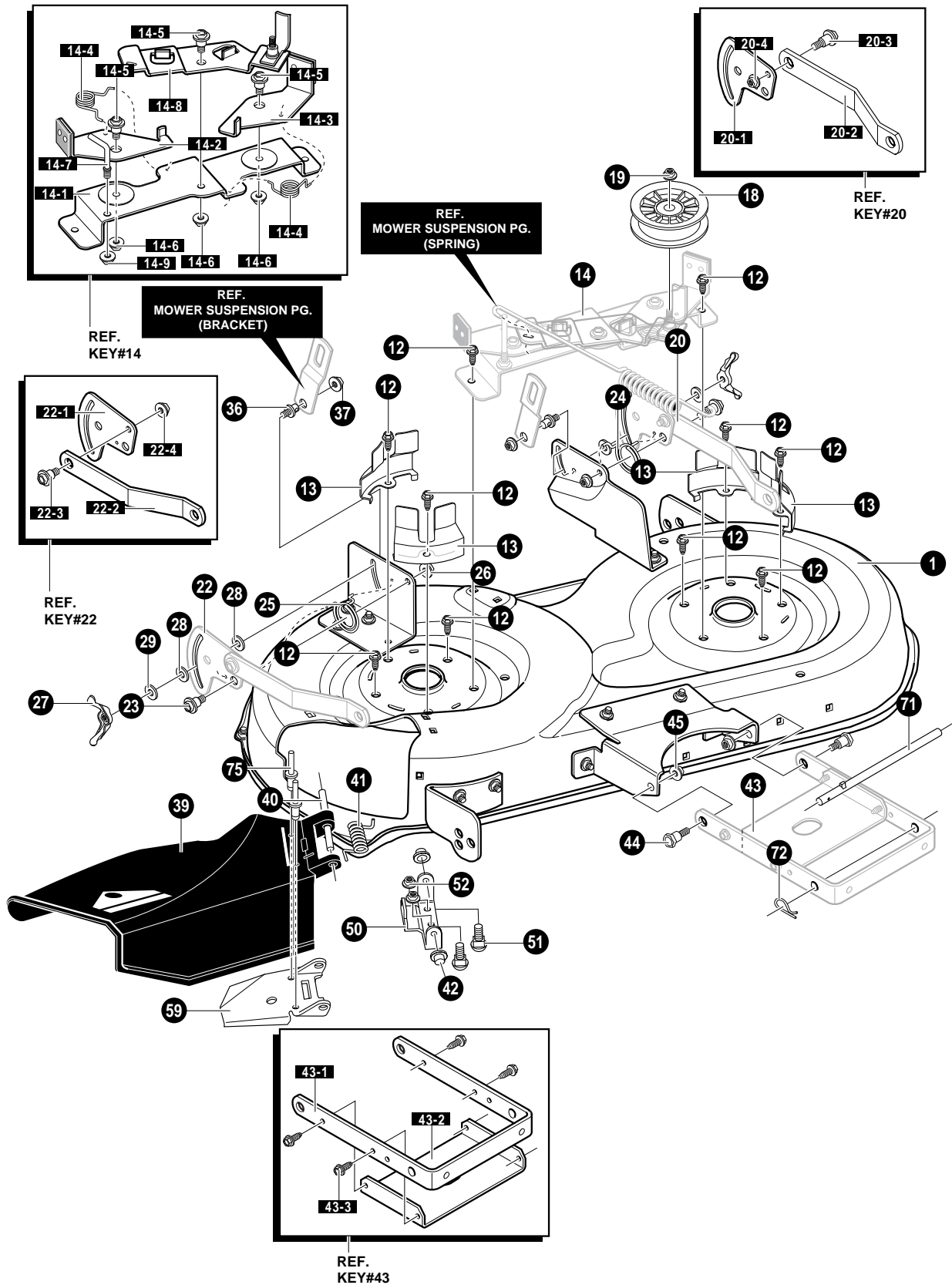
NOTE: ALWAYS USE ORIGINAL EQUIPMENT PARTS. Use of service/replacement parts other than original equipment parts may void your warranty .

ALL UNNUMBERED ITEMS ARE INTERCHANGEABLE WITH OPPOSITE SIDE

94189B

PRE-PAINTED DECK ASSEMBLY

KEY NO.	PART NO.	DESCRIPTION	QTY
1	94188	BLADE HOUSING - 42"	1
2	94191	BRACKET, DECK RH	1
3	94192	BRACKET, DECK LH 42"	1
4	57072	BOLT, 5/16-18X .63	5
5	710204	NUT,5/16-18	5
9	92426	PLATE, REAR, TOEGUARD, 42"DECK	2
10	57072	BOLT, 5/16-18X .63	4
11	710205	NUT, 5/16-18	4
12	94190	BRACKET, FRONT DECK 42"	1
13	57072	BOLT, 5/16-18X .63	4
14	710204	NUT,5/16-18	4
15	92422	BRACKET,42"DECK RH	1
16	92423	BRACKET,42"DECK	1
17	57072	BOLT, 5/16-18X .63	4
19	710205	NUT, 5/16-18 WDFLLK	4



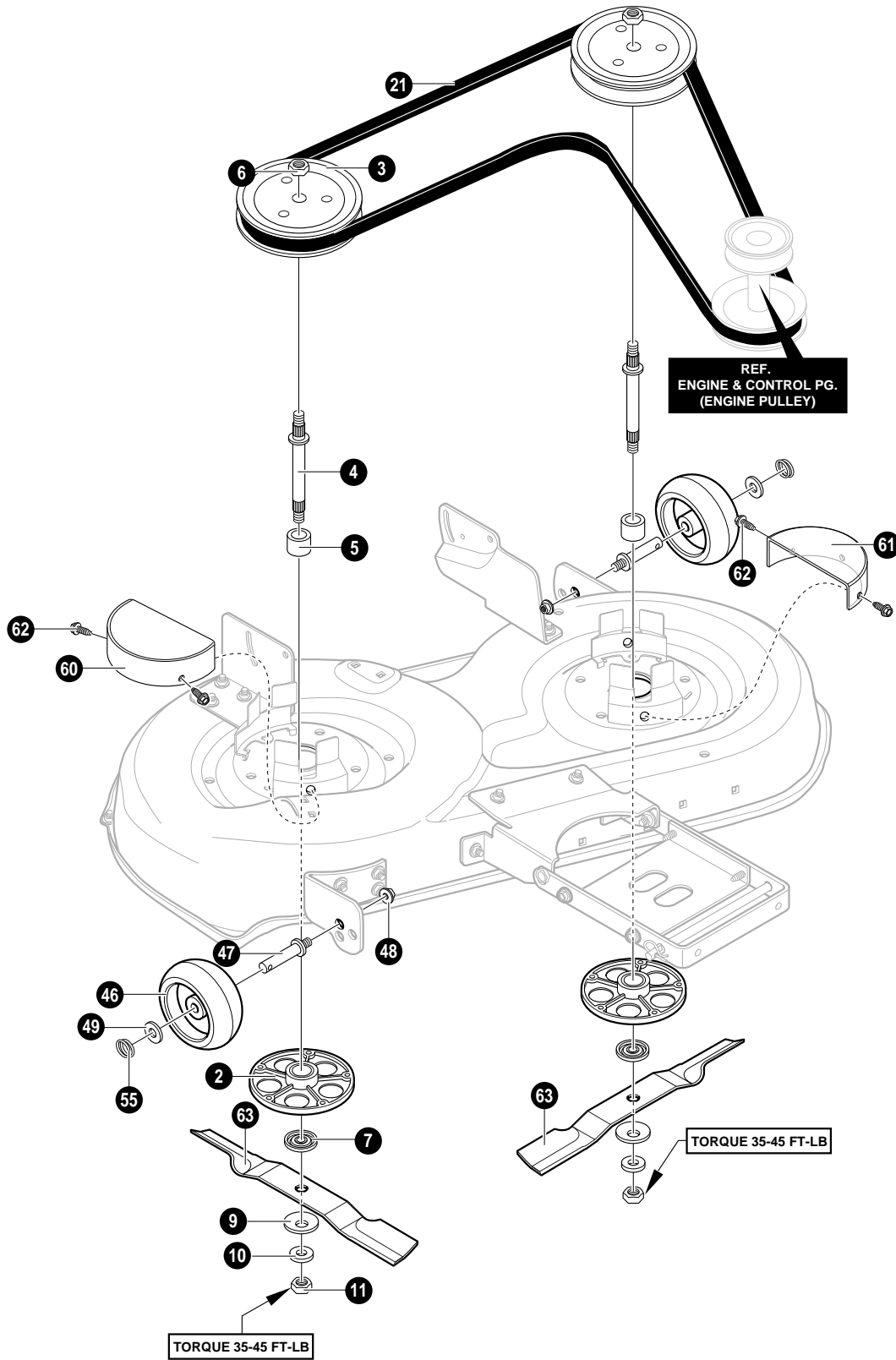
NOTE: ALWAYS USE ORIGINAL EQUIPMENT PARTS. Use of service/replacement parts other than original equipment parts may void your warranty .

ALL UNNUMBERED ITEMS ARE INTERCHANGEABLE WITH OPPOSITE SIDE

345038A

DECK ASSEMBLY

KEY NO.	PART NO.	DESCRIPTION	QTY
1	94189-821	ASS'Y, BLADE HOUSING 42"	1
12	710199	SCREW, 3/8-16X1.25 WAHHSPTAP	10
13	94051-821	COVER, SEGMENT BELT GUIDE	4
14	690138-821	ASSEMBLY., BRACKET	1
14-1	94193	BRACKET, BRAKE	1
14-2	94047	BRAKE RH	1
14-3	94049	BRAKE LH	1
14-4	710227	TORSION SPRING .55LG	2
14-5	710098	BOLT.50X.75 , 3/8-16	3
14-6	710140	NUT,3/8-16	3
14-7	94781	SCREW - GUIDE	1
14-8	690408	ASS'Y, IDLER ARM	1
14-9	710205	NUT, 5/16-18	1
18	91801	PULLEY, IDLER	1
19	711622	NUT,3/8-16HWDFLK	1
20	341594-821	ASSEMBLY PLATE, REAR SUS.BRKT.LH	1
20-1	94128	PLATE - SUSPENSION	1
20-2	94055	SUSPENSION BRACKET REAR	1
20-3	710095	BOLT, SHOULDER 3/8-16	1
20-4	710140	NUT,3/8-16HWDFLK MACK	1
22	341593-821	ASSEMBLY PLATE,REAR SUS.BRKT.RH	1
22-1	94128	PLATE - SUSPENSION	1
22-2	94055	SUSPENSION BRACKET REAR	1
22-3	710095	BOLT, SHOULDER 3/8-16	1
22-4	710140	NUT,3/8-16	1
23	711611	BOLT, SHOULDER .375	2
24	710113	SPRING, TORSION	1
25	710112	SPRING,TORSION .68LG RH	1
26	711622	NUT,3/8-16	2
27	711600	WINGNUT	2
28	94137	PAD, FRICTION	2
29	711628	WASHER	2
36	711595	PIN, HANGER	2
37	711676	PIN, HAIR	2
38	711616	WASHER, FLAT	2
39	94687	DEFLECTOR CHUTE	1
40	95303	ZINC ROD, CHUTE DEFLECTOR	1
41	710194	SPRING, TORSION	1
42	711627	NUT, PUSH CAP	2
43	690058-821	SUB. ASSEMBLY BRACKET. & STIFFNER	1
43-1	94058	BRACKET, FRONT SUSPENSION	1
43-2	95057	STIFFENER	1
43-3	710079	SCREW, 5/16-18X.75	4
44	711611	BOLT, SHOULDER .375	2
45	711622	NUT,3/8-16HWDFLK MACK	2
50	94956-821	BRACKET, CHUTE ATTACH	1
51	711661	BOLT, 5/16-18X .63	2
52	711634	NUT, 5/16-18 WDFLLK	2
56	95295	ZINC ROD, HANGER	1
59	94686-821	DEFLECTOR SUPPORT	1
60	94669-821	GUARD, BELT RH	1
61	94668-821	GUARD, BELT LH	1
62	711642	SCREW,1/4-20X .63	4
71	95295	ROD, HANGER	1
72	711676	PIN, HAIR	1
75	711624	RIVET-SEMI	2



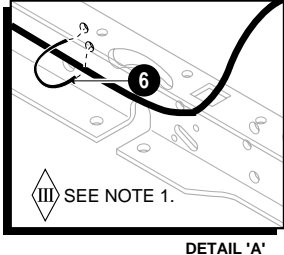
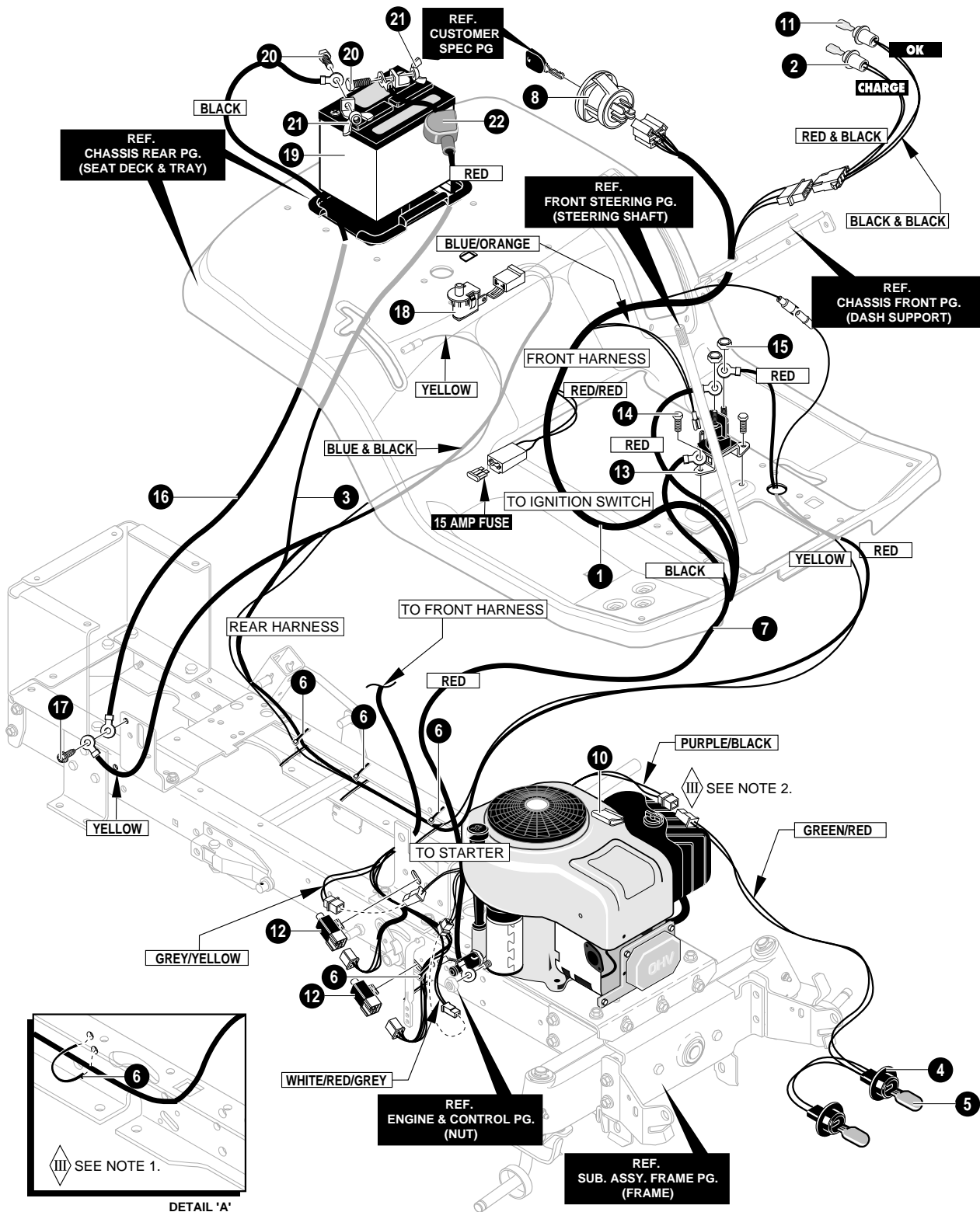
NOTE: ALWAYS USE ORIGINAL EQUIPMENT PARTS. Use of service/replacement parts other than original equipment parts may void your warranty.

ALL UNNUMBERED ITEMS ARE INTERCHANGEABLE WITH OPPOSITE SIDE

345038A

DECK ASSEMBLY

KEY NO.	PART NO.	DESCRIPTION	QTY
2	92574	ASSEMBLY., JACKSHAFT HOUSING 42"	2
3	95308	PULLEY,SPLIT STEEL 42" DECK	2
4	94129	JACKSHAFT 7.12LG	2
5	94130	SPACER,.625 X .875 X 1.858	2
6	711626	NUT, 9/16-18 UNF-2B(15X121)	2
7	92466	ADAPTER, DECK/BLADE 38"	2
9	710118	WASHER, BELLVIL.625X1.75 17X166	2
10	710117	WASHER,FLAT .625X1.00X.188	2
11	710104	NUT, 9/16 REGHEX (15X100)	2
21	710213	BELT, 42" DECK (37X88)	1
46	92683	GAUGE WHEEL	2
47	711746	BOLT, 3/8-16X.63	2
48	711622	NUT, 3/8-16 HWDFLK MACK	2
49	711615	FLATWASHER .518X.87X16	2
55	711764	PIN, CIRCLE	2
63	95102	BLADE, 42"LOW LIFT	2

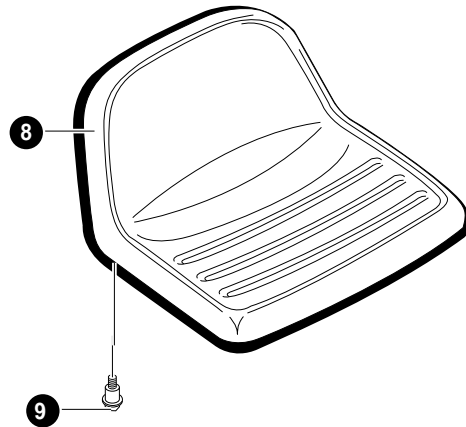
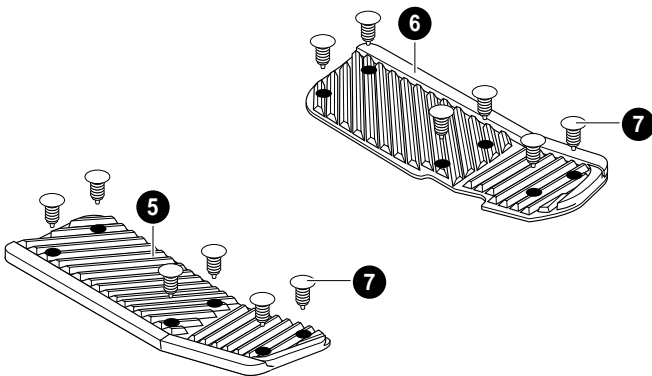
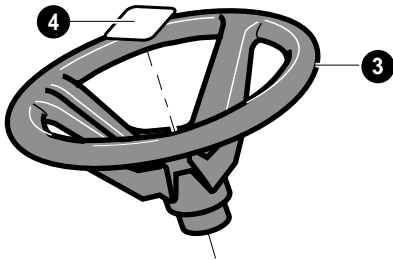
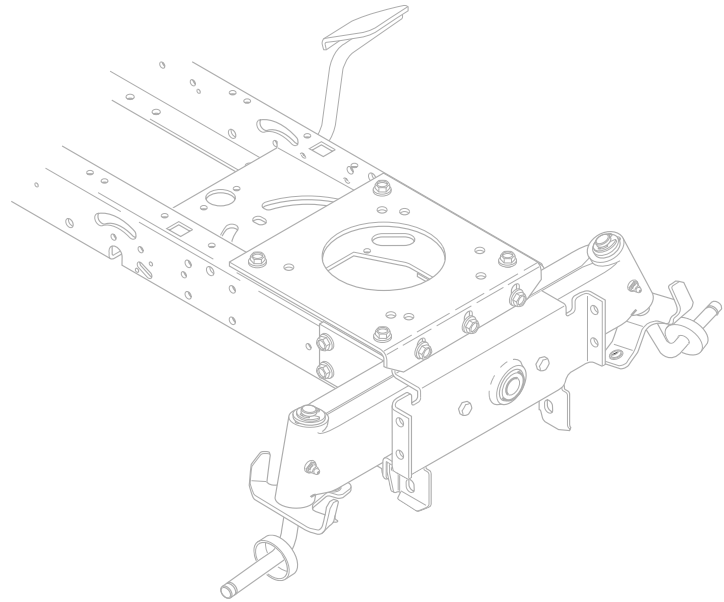
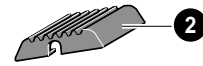


DETAIL 'A'

NOTE
 1. WIRE HARNESS AND WIRE TIE TUCK UNDER RAIL.
 2. LAY HEADLIGHT WIRES BETWEEN AIR CLEANER AND ENGINE COVER.

ELECTRICAL ASSEMBLY

KEY NO.	PART NO.	DESCRIPTION	QTY
1	95374	WIRE HARNESS,INTEK	1
2	690054	INDICATOR HARNESS, OIL&OK	1
3	340530	WIRE HARNESS, REAR	1
4	94103	WIRE HARNESS FOR HEADLIGHTS	1
5	52572	BULB, HEADLAMP	2
6	57444	TIE, CABLE BLACK NYLON 5.62L	5
7	711579	WIRE, LEAD SOLENOID TO STARTER	1
8	94762	SWITCH, IGNITION	1
10	55939	WIRE CLIP, ADHESIVE	1
11	57769	BULB, INDICATOR	3
12	94136	SWITCH LIMIT	2
13	94613	SOLENOID	1
14	711619	SCREW,HHWATAP1/4X.50	2
15	711632	NUT, 1/4-20 HEXNYL	2
16	710228	WIRE, GROUND	1
17	711760	SCREW,1/4-20X.75	1
18	94159	SWITCH, SEAT	1
19	92739	BATTERY, 5 PLATE	1
20	711680	BOLT,1/4-20X.63	2
21	711636	NUT, WING 1/4-20	2
22	335417	BOOT, BATTERY	1
	302031	FUSE 15 AMP	



KEY NO.	PART NO.	DESCRIPTION	QTY
1	327350	IGNITION KEY	2
2	94630	PAD, CLUTCH/BRAKE	1
3	95184	WHEEL, STEERING	1
4	711325	INSERT 4-SPOKE	1
5	95438	FOOTREST PAD RH	1
6	95437	FOOTREST PAD LH	1
7	311087	RATCHET FASTENER	12
8	95236	SEAT	1
9	711740	BOLT, SHOULDER 5/16-18	2