

REF. LEVER ONLY  
ON LEVER HEIGHT  
ADJUST UNITS

REF. FRAME ASSY.

REF. BELT ONLY  
ON SELF-PROPELLED  
UNITS

REF. SPACER ON REAR  
DRIVE W/REVERSIBLE  
BLADE UNITS,  
SEE DRIVE ASSY.

| KEY#  | PART#  | DESCRIPTION                      |
|-------|--------|----------------------------------|
| 10    | -      | SEE ENGINE MANUAL                |
| 12    | 47792  | SCREW, 3/8-16X1.00               |
| 14    | 785341 | WOODRUFF KEY                     |
| 50    | 71877  | BLADE, 21                        |
| 51    | 671058 | ADAPTER, BLADE 21"               |
| 53    | 710210 | WASHER, .39IDX2.25ODX.12 BELLVIL |
| 54    | 710207 | WASHER, FLAT.406X.812X.06        |
| 55    | 710163 | SCREW, 3/8-24X1.50 HHC           |
| 80-20 | 672266 | BRACKET, HANDLE RH               |
| 80-30 | 672267 | BRACKET, HANDLE LH               |
| 80-35 | 710277 | SCREW, 5/16-18X.63               |
| 80-36 | 710204 | NUT, 5/16-18 HEXWDFLLKWHIZ       |
| 80-40 |        | NOT USED ON THIS UNIT            |
| 600   | 43640  | DEFLECTOR, REAR                  |
| 601   | 710271 | SCREW, 10-16X.50                 |
| 610   | 71833  | DOOR, REAR                       |
| 611   | 672049 | SPACER, RR DOOR                  |
| 612   | 710273 | SCREW, 10-16X.50                 |
| 613   | 672282 | ROD, PIVOT RR DOOR               |
| 614   | 710285 | CAP, PUSH ON                     |
| 615   | 340823 | SPRING, TORSION                  |



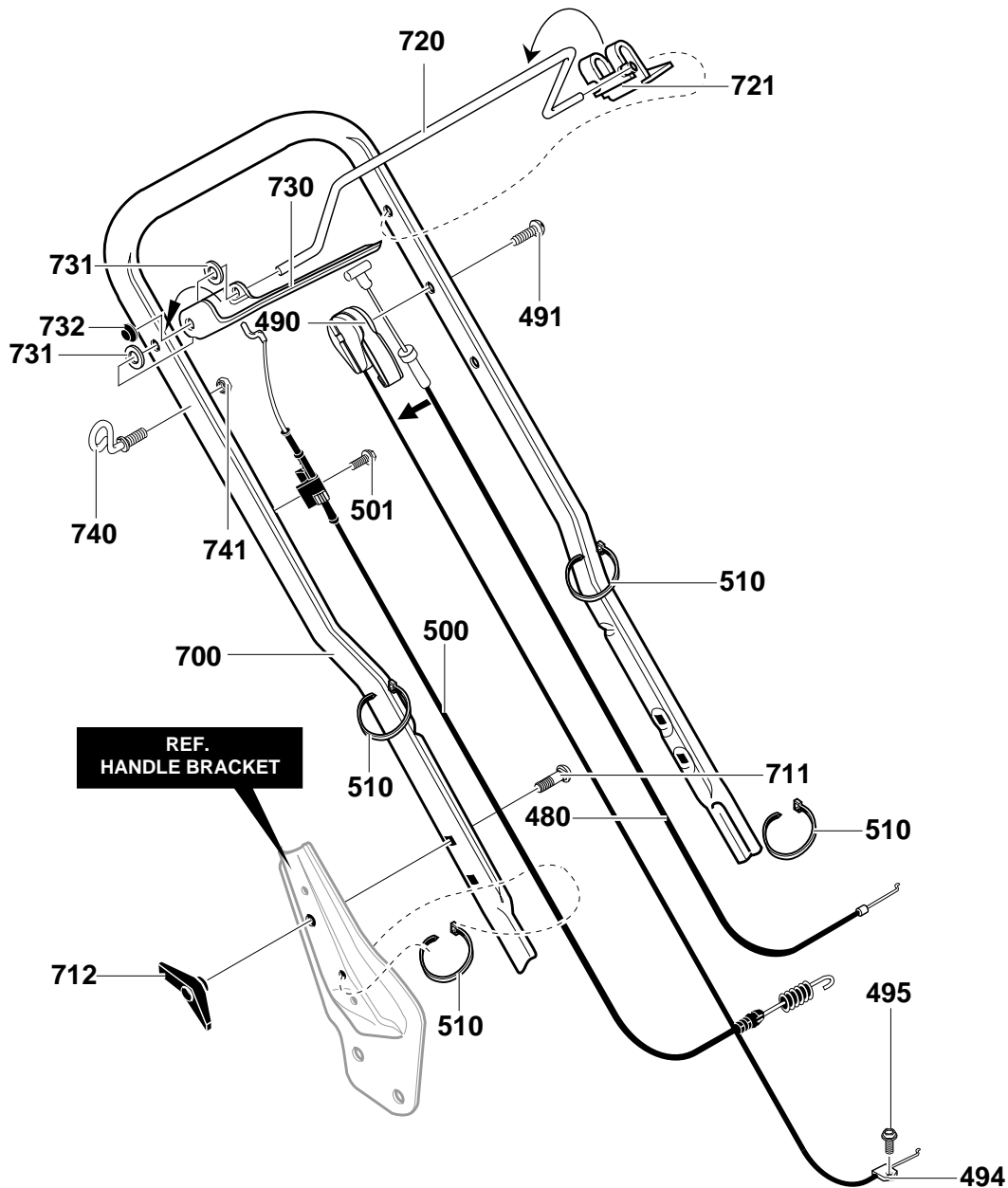
# MODEL 21815X50A

# REPAIR PARTS

| KEY# | PART#      | DESCRIPTION                  |
|------|------------|------------------------------|
| 80   | 672275-860 | ASSY, FRAME                  |
| 80-2 | 71238      | GUARD, BELT                  |
| 185  | 672765     | INDEX PLATE                  |
| 186  | 671142     | ASSY, AXLE & BRACKET         |
| 187  | 671444     | LEVER, HEIGHT ADJ W/GRIP     |
| 188  | 446363     | WASHER, FLAT .375X.88X.082   |
| 189  | 643387     | SPACER, PIVOT .385IDX1.00D   |
| 190  | 710258     | WASHER, SPRING .50X1.0X.021  |
| 191  | 180124     | SCREW, 3/8-16X1.25           |
| 200  | 672042     | TRANSMISSION                 |
| 201  | 643649     | SHIELD, AXLE                 |
| 215  | 71577      | ASSY, HEIGHT ADJ LR          |
| 216  | 71578      | ASSY, HEIGHT ADJ RR          |
| 220  | 710167     | SCREW, 3/8-16X.75            |
| 221  | 45171      | NUT, 3/8-16 HWDFL WHIZ-LOCK  |
| 222  | 710326     | NUT, WELD 3/8-16 .625X1.5    |
| 223  | 710273     | SCREW, 10-16X.50 WAHHSEMSAB  |
| 230  | 71481      | SUPPORT, SPRING              |
| 231  | 710274     | SCREW, 1/4-20 X.63 HHWATAP   |
| 232  | 71480      | BUSHING, SPRING SUPT.        |
| 233  | 43844      | SPACER, .508X.712X.563       |
| 234  | 710327     | SPRING, COMPRESSION          |
| 235  | 710205     | NUT, 5/16-18 WDFLLK 15X88    |
| 240  | 710270     | SCREW, 1/4-14X.50 HWATAP     |
| 241  | 671032     | DUSTCOVER 8" WHEEL           |
| 253  | 643629     | PIN, DRIVE                   |
| 254  | 671904     | GEAR, PINION RIGHT           |
| 255  | 671903     | GEAR, PINION LEFT            |
| 256  | 710190     | BELT, 2L V 15.75L            |
| 257  | 710254     | WASHER, FLAT .502 X .99 .031 |
| 258  | 20864      | RING, RET E                  |
| 260  | 43770-860  | COVER, LOWER BELT GUARD      |
| 261  | 71239-860  | COVER, FRONT BELT            |
| 262  | 710273     | SCREW, 10-16X.50             |
| 270  | 672269     | PULLEY                       |
| 271  | 710294     | PIN, SPRING                  |
| 275  | 671925     | BRACKET, TRANSMISSION CABLE  |
| 276  | 710264     | SCREW, 1/4-20X .50           |
| 284  | 71246-860  | COVER, REAR TRANSMISSION     |
| 287  | 711863     | SCREW, 1/4-20X.63            |
| 300  | 671132     | TIRE & RIM, 8X2              |
| 301  | 671133     | WHEEL, DRIVE 8"X2            |
| 302  | 710252     | WASHER, FLAT                 |
| 303  | 710140     | NUT, 3/8-16HWDFLLK MACK      |
| 304  | 672122     | HUBCAP, 8" BAR WHEEL         |
| 310  | 672122     | HUBCAP, 8" BAR WHEEL         |
| 591  | -          | OPTION NOT USED ON THIS UNIT |
| 592  | -          | OPTION NOT USED ON THIS UNIT |
| 593  | -          | OPTION NOT USED ON THIS UNIT |
| 594  | -          | OPTION NOT USED ON THIS UNIT |
| 595  | -          | OPTION NOT USED ON THIS UNIT |
| 620  | -          | OPTION NOT USED ON THIS UNIT |

**NOTE**

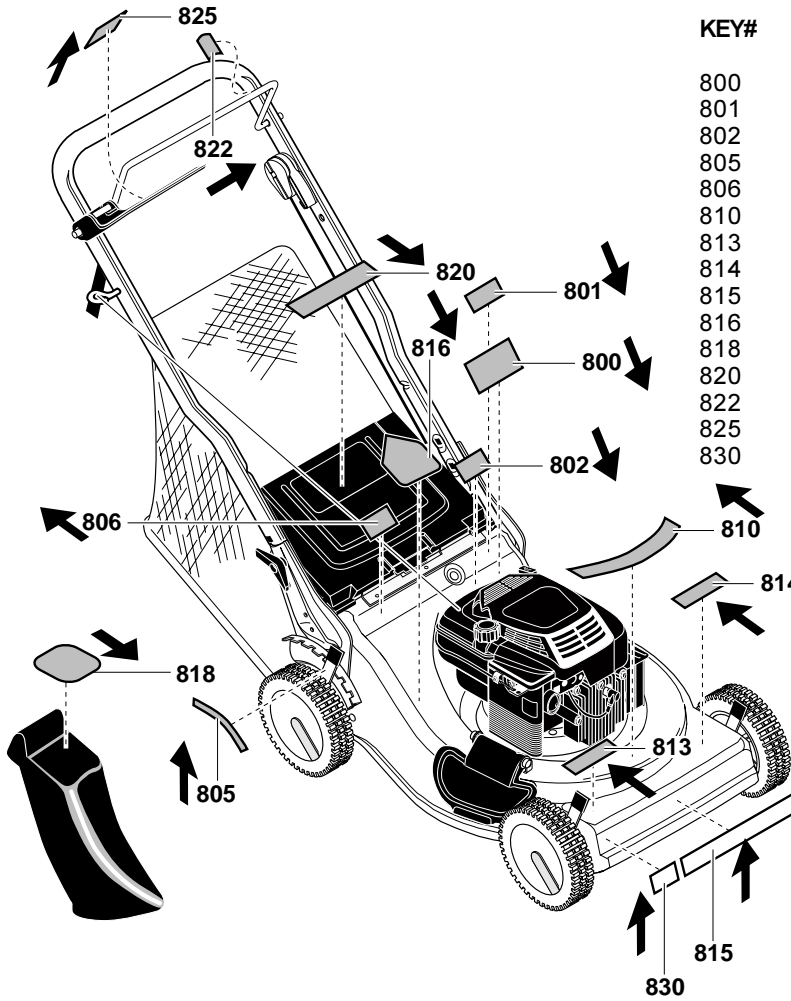
KEY# 480 & 490 SNAP TOGETHER



| KEY# | PART#      | DESCRIPTION               |
|------|------------|---------------------------|
| 480  | 672529     | CABLE STOP                |
| 490  | 672537     | T-CABLE                   |
| 491  | 710178     | SCREW, 1/4-20X2.00 RDHDM  |
| 494  | 12425      | CLAMP, THROTTLE           |
| 495  | 710275     | SCREW, 10-32X.62 SLWAHTAP |
| 500  | 672545     | CABLE, DRIVE              |
| 501  | 710269     | SCREW, #10-16X.75         |
| 510  | 712267     | TIE, BLACK CABLE          |
| 700  | 672286-806 | HANDLE, 21"               |
| 711  | 710175     | BOLT, 5/16-18X2.00        |
| 712  | 671294     | KNOB, WING 5/16-18        |
| 720  | 672429-860 | LEVER, STOP ENGINE WIRE   |
| 721  | 643628     | BRACKET, STOP LEVER       |
| 730  | 671566     | LEVER, DRIVE CONTROL      |
| 731  | 710491     | WASHER, NYLON             |
| 732  | 710285     | CAP, PUSH ON              |
| 740  | 672510     | GUIDE, ROPE               |
| 741  | 710203     | NUT, 1/4-20               |

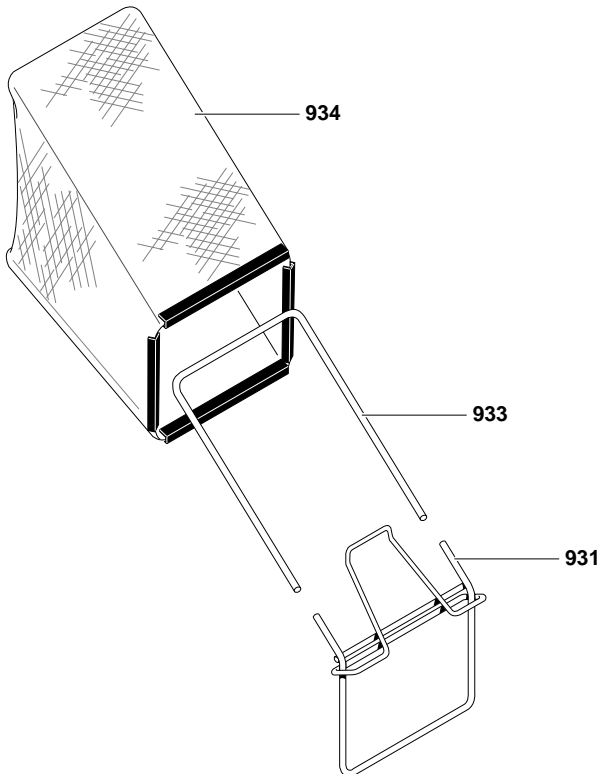
# MODEL 21815X50A

# REPAIR PARTS



| KEY# | PART#  | DESCRIPTION              |
|------|--------|--------------------------|
| 800  | -      | NOT A SERVICEABLE PART   |
| 801  | -      | NOT USED ON THIS UNIT    |
| 802  | 318010 | DECAL, TUV               |
| 805  | -      | NOT USED ON THIS UNIT    |
| 806  | -      | NOT USED ON THIS UNIT    |
| 810  | 710448 | DECAL, "SENTINEL"        |
| 813  | 710449 | DECAL, "MOW/BAG-53"      |
| 814  | 710356 | DECAL, "POWER-PROPELLED" |
| 815  | -      | NOT USED ON THIS UNIT    |
| 816  | 402701 | DECAL, CAUTION DECK RH   |
| 818  | -      | NOT USED ON THIS UNIT    |
| 820  | 710764 | DECAL, CAUTION EXPORT    |
| 822  | 339481 | DECAL, STOP LEVER        |
| 825  | 336279 | DECAL, DRIVE LEVER       |
| 830  | -      | NOT USED ON THIS UNIT    |

343646A



| KEY# | PART#  | DESCRIPTION            |
|------|--------|------------------------|
| 931  | 672293 | ASSY, BAG FRAME        |
| 933  | 71592  | FRAME, CATCHER BAG TOP |
| 934  | 672574 | BAG, SENTINEL          |

326165B