



*Green Passion*

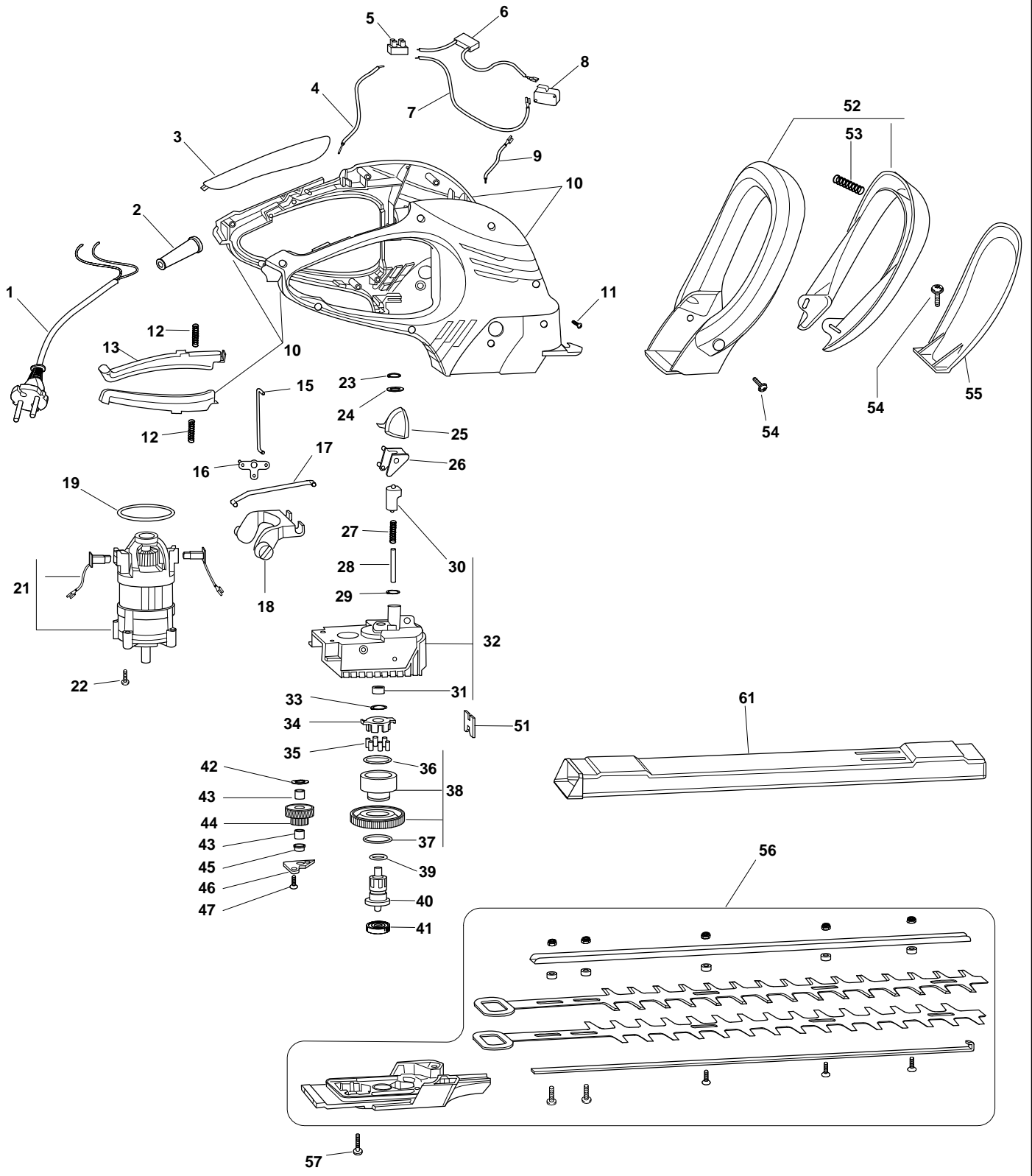
# Illustrated Parts List

## XH 600 E PRO - Model Year 2008

- Use GLOBAL GARDEN PRODUCT Genuine Spare Parts specified in the parts list for repair and/or replacement.
- The contents described in the parts list may change due to improvement.
- The drawings of the spare parts are only indicative and might not represent the part in question exactly.
- The indications "right" - "left" - "front" - "rear" refer to the position of the operator when using the machine.
- When placing orders of parts for repair and/or replacement, make sure that the illustrated parts list is the one applying to the machine's year of manufacture, as shown on the identification plate attached to the machine.

COPYRIGHT by GLOBAL GARDEN PRODUCTS

All rights reserved. No part of this material may be reproduced or transmitted, in any form or by any means, electronic or mechanical, including photocopying, recording or by any information storage and retrieval system, without permission in writing from GLOBAL GARDEN PRODUCTS.





XH 600 E PRO

**XH 600 E PRO - Model Year 2008**

Pos.	Part no.	Q.ty	Description	Remarks
1	1911-1488-01	1	Power Cord Assy	
2	1911-1066-01	1	Cord Protector	
3	1911-1508-01	1	Handle	
4	1911-1526-01	1	Cable	
5	1911-1104-01	1	Cable	
6	1911-1525-01	1	Capacitor	
7	1911-1523-01	1	Cable	
8	1911-1524-01	1	Switch	
9	1911-1619-01	1	Cable	
10	1911-1598-02	1	Handle Assy Red	
11	1911-1105-01	11	Screw	
12	1911-1083-01	2	Spring	
13	1911-1511-01	1	Switch Lever	
15	1911-1538-01	1	Rod	
16	1911-1516-01	1	Lever	
17	1911-1537-01	1	Rod	
18	1911-1514-01	1	Gearshift	
19	1911-1520-01	1	O Ring	
21	1911-1616-01	1	Motor	
22	1911-1105-01	11	Screw	
23	1911-1567-01	1	Washer	
24	1911-1529-01	1	Washer	
25	1911-1518-01	1	Switch	
26	1911-1515-01	1	Gearshift	
27	1911-1530-01	1	Spring	
28	1911-1539-01	1	Pin	
29	1911-1528-01	1	Washer	
30	1911-1621-01	1	Cap	
31	1911-1546-01	1	Bush	
32	1911-1564-01	1	Transmission Unit	
33	1911-1549-01	1	Snap Ring	
34	1911-1555-01	1	Shock Absorber	
35	1911-1531-01	6	Needle	
36	1911-1521-01	1	O Ring	
37	1911-1489-01	1	Snap Ring	
38	1911-1543-01	1	Sprocket	
39	1911-1522-01	1	O Ring	
40	1911-1618-01	1	Pinion	
41	1911-1554-01	1	Bearing	
42	1911-1550-01	1	Washer	
43	1911-1548-01	2	Bush	
44	1911-1565-01	1	Sprocket	
45	1911-1557-01	1	Spacer	
46	1911-1556-01	1	Plate	
47	1911-1552-01	2	Screw	
51	1911-1532-01	1	Shoe	
52	1911-1594-01	1	Handle Ass.Y	
53	1911-1551-01	2	Spring	
54	1911-1534-01	4	Screw	
55	1911-1517-01	1	Hand Guard	
56	1911-1615-01	1	Blades	
57	1911-1533-01	4	Screw	
61	1911-1519-01	1	Blade Guard	