

brand **Flymo**

date **05.12.2003** Sheet **1/2**

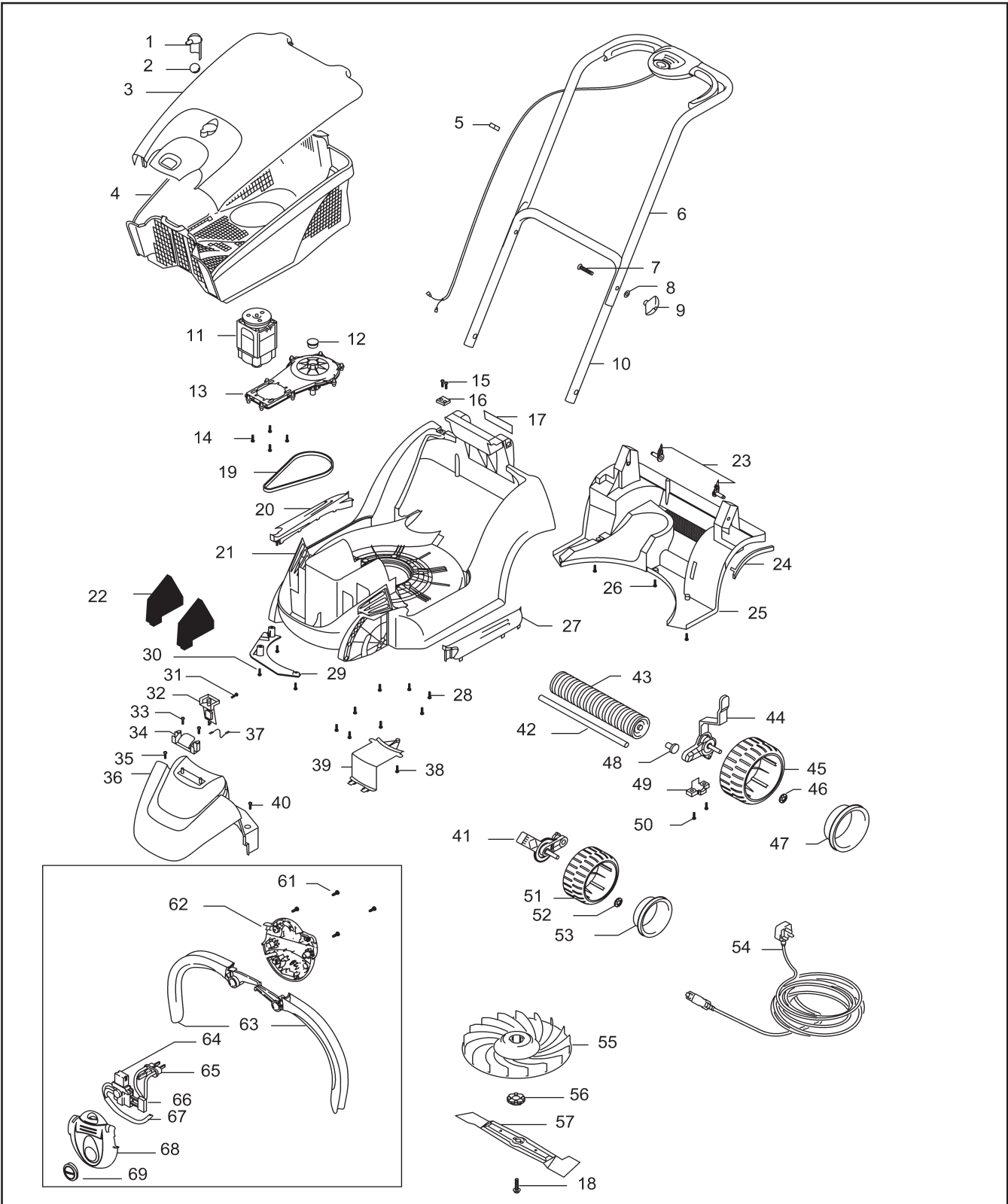
Publication No. **AP0312006**

Model

Flymo PC 330
Flymo PC 330
Flymo PC 330

Product Number

9643304-01 (UK)
9643304-67 - 9643304-86 (Eu)
9643304-22 (CH)



brand	Flymo
-------	-------

date	05.12.2003	Sheet 2/2
------	------------	-----------

Flymo PC 330

pos	Part No	Description	Qty	pos	Part No	Description	Qty
1	\$ 5127711-00/9	Lens indicator	1	35	5149753-01/3	Screw	1
2	\$ 5149277-00/5	Ball	1	36	5119130-00/2	Motor Cowl assy	1
3	5119652-00/5	Lid assembly	1			includes % items	
		includes \$ items		37	5130700-00/7	Cowl lead assy	1
4	5107130-00/6	Grassbox	1	38	5149197-01/3	Screw	1
5	5138574-00/8	Cable clip	2	39	5128226-00/7	Inspection hatch	1
6	5118303-00/6	Handle, upper	1	40	5149753-01/3	Screw	1
7	5149198-01/1	Bolt	2	41	5127680-00/6	Adjuster, front RH	1
8	5140266-00/7	Washer	2		5127683-00/0	Adjuster, front LH	1
9	5107091-64/6	Wing knob	2	42	EU,CH 5127920-00/6	Rear tube	1
10	5119253-00/2	Handle, lower	1	43	UK 5127678-00/0	Roller	1
11	5119653-00/3	Motor	1	44	5119204-00/5	Rear adjuster RH	1
12	5149655-00/2	Cover	1		5119205-00/2	Rear adjuster LH	1
13	5128225-00/9	Baseplate assy	1	45	5128122-00/8	Wheel	2
14	5139608-00/3	Screw	4	46	5149680-00/0	Starlock washer	2
15	5149753-01/3	Screw	2	47	5127671-00/5	Hub cap	2
16	5139049-00/0	Clamp cable	1	48	5130789-00/0	Roller pin	2
17	5138587-00/0	Label, warning	1	49	5119239-00/1	Axle clamp	1
18	5137608-00/5	Blade bolt	1			includes LH & RH	
19	5131129-00/8	Belt	1	50	5149753-01/3	Screw	4
20	^ 5128023-00/8	Cut width infill RH	1	51	5127666-00/5	Wheel	2
21	5119236-00/7	Deck kit	1	52	5149680-00/0	Starlock washer	2
		includes ^ items		53	5127670-00/7	Hub cap	2
22	5138528-00/4	Filter	2	54	UK 5127250-03/2	Cable	1
23	5130680-00/6	Handle fix	2	55	5107133-00/0	Impeller	1
24	+ 5119238-00/3	Infill kit	1	56	5128220-00/0	Spacer	1
		includes LH & RH		57	5119559-00/2	Blade	1
25	5119132-00/8	Rear valence assy	1	61	5130837-00/2	Screw	4
		includes + item		62	5119457-68/8	Switchbox Lower	1
26	5149753-01/3	Screw	3	63	5119459-64/1	Levers	2
27	^ 5128022-00/0	Cut width infill LH	1	64	5130504-00/3	Switch	1
28	5149197-01/3	Screw	8	65	5127696-00/2	Pin Retainer	1
29	^ 5119221-00/9	Deck guard	1	66	5148397-01/0	Capacitor	1
30	^ 5149753-01/3	Screw	3	67	5130710-00/6	Lead	1
31	5130755-00/1	Screw	1	68	5119456-68/8	Switchbox Upper	1
32	5130747-00/8	Switch/bracket	1	69	5131030-64/4	Button Lock off	1
		Assy					
33	% 5149753-01/3	Screw	2				
34	% 5127871-00/1	Lid latch	1				

Flymo

 Electrolux

Power Compact 330

Advanced electric wheeled lawnmower.

- The Powerful, Compact and Lightweight lawnmower with a 'unique' central grassbox for easy emptying.
- Collects and Compacts more grass for less emptyings.
- Powerful 1600W motor with belt drive system for cutting in tough conditions.
- Unique, advanced switch system for easy, comfortable right or left handed use.
- Compact design, for easy storage and manoeuvrability.
- Grassbox full indicator that tells you when to empty the grassbox.
- Electric interlock for extra safety.
- Plastic wheel tread.
- Quickset height adjuster.

Technical Specifications	Power Compact 330
Blade Length	33cm
Cutting System	Metal Blade
Motor Power	1600W
Cutting Heights	6 (20 - 75mm)
Grassbox Capacity	27 litres
Wheel Tread	Plastic
Adjuster	Quicksets
Carton Dimensions	729x467x490mm
Weight (unpacked)	11.5kg
Weight (packed)	15.5kg
Product Number	9643304-01
Bar Code	5011759 01242-3

Pre-Pack	Part No.	Bar Code	Flymo Ref.
Metal Blade 33cm	5118276-87	5011759 90380-6	FLY006