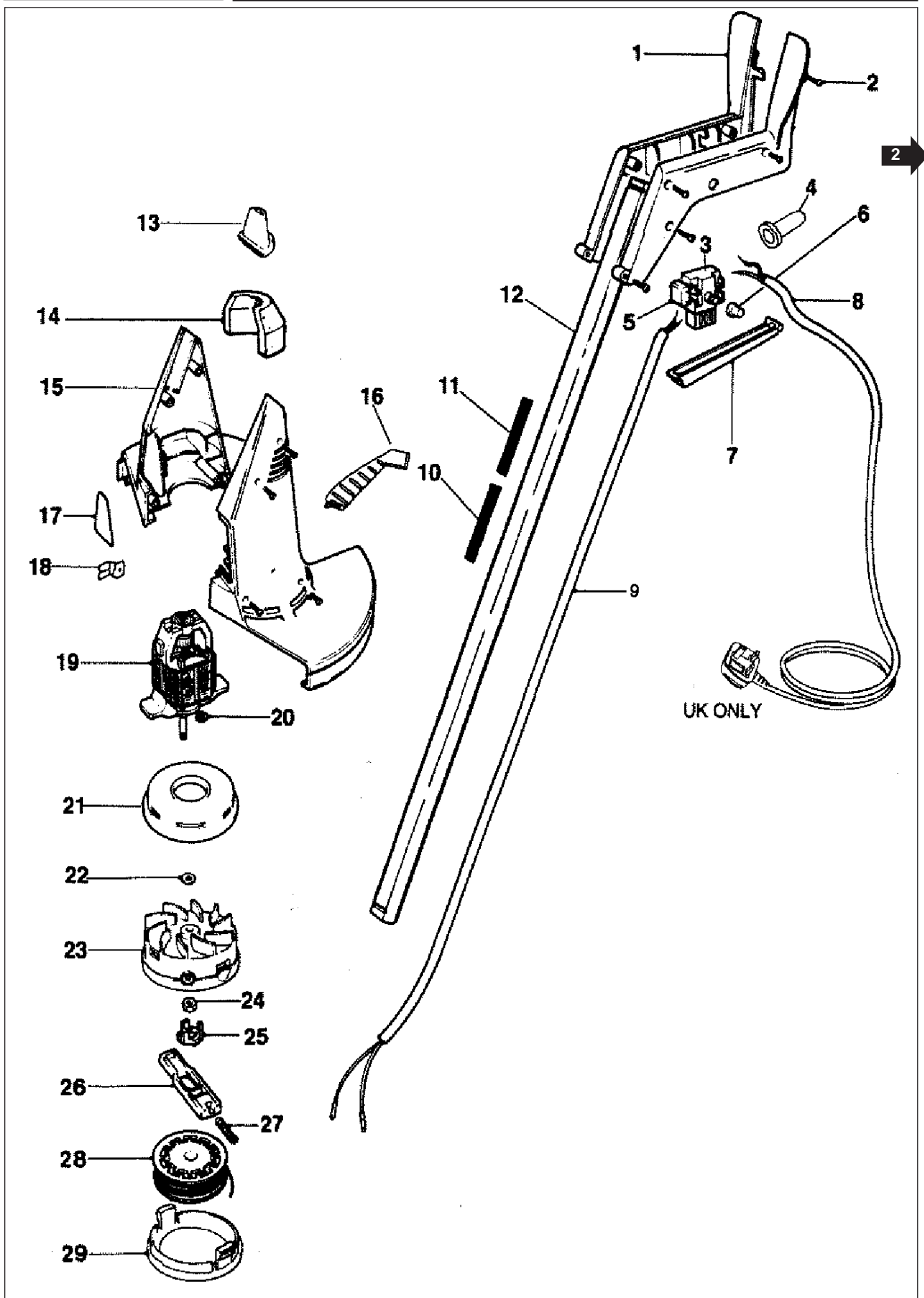


Flymo

MODEL
PRODUCT NO

Minitrim ET20-4
9648523, 9648524, 9648525



MODEL	Minitrim ET20-4
PRODUCT NO.	9648523, 9648524, 9648525



KEY	PART NUMBER	DESCRIPTION	QTY
01	5149208-03/4	HANDLES,PAIR OF	1
02	5148552-01/0	SCREW	9
03	5137630-03/3	SWITCH	1 GB.EI.F.B.NL.D.I.E.P.
	5138074-01/7	SWITCH	1 CH.N.A.DK.S.SF.
04	5148741-01/9	PROTECTION SLEEVE	1 CH
05	5148397-01/0	CAPACITOR	1
06	5148253-01/5	LOCK OFF COVER	1
07	5137609-02/9	SWITCH LEVER	1
08	5127251-01/4	LEAD C/W 3 PIN PLUG	1 GB.EI.
	5147000-03/7	LEAD	1 CH.
	5148282-02/2	LEAD	1 N.A.F.B.NL.D.DK.S.SF.I.E.P.
09	5137632-02/1	LEAD,INTERNAL	1 GB.EI.F.B.NL.D.N.A.DK.S.SF.I.E.P.
	5137632-05/4	LEAD,INTERNAL	1 CH.
10	5126906-01/4	LABEL,WARNING	1 GB.EI.
	5126906-03/0	LABEL,WARNING	1 CH.N.A.F.B.NL.D.
	5126906-06/3	LABEL,WARNING	1 DK.S.SF.
	5127351-04/6	LABEL,WARNING	1 F.I.E.P.
11	5127351-01/2	LABEL,WARNING	1 CHF.I.E.P.
	5127351-02/0	LABEL,WARNING	1 F.B.NL.D.
	5127351-03/8	LABEL,WARNING	1 DK.S.SF.
	5126906-05/5	LABEL,WARNING	1 N.A.
	5126906-07/1	LABEL,WARNING	1 DK.S.
12	5126981-68/6	HANDLE TUBE	1
13	5137694-00/5	INNER SHELL	1 N.A.
14	5137667-00/1	FILTER	1
15	5149349-00/2	CLAMSHELLS,KIT	1
16	5126913-00/2	SCRAPER	1
17	5148339-01/2	LABEL,MINITRIM	1
18	5148353-00/5	LINE CUTTER	1
19	5137840-00/4	MOTOR,240V	1 GB.EI.
	5137840-01/2	MOTOR,220V	1 CH.F.B.NL.D.N.A.DK.S.SF.I.E.P.
20	7353109-21/3	E-CLIP	1
21	5137693-01/5	SPLASHPROOF RING	1 N.A.
22	7341153-01/8	WASHER	3
23	5148621-01/3	HEAD FERRULE ASSY	1
24	5148683-00/5	NUT	1
25	5148631-00/4	INSULATION CAP	1
26	5127198-00/9	LINE FEEDER	1
27	5148940-00/9	SPRING	1
28	5137651-01/3	SPOOL & LINE	1
29	5126976-00/9	SPOOL COVER	1

PRODUCT APPLICATION

9648523-25	GB.EI.	9648524-82	N.A.	9648525-25	GB.EI.	9648525-83	F.B.NL.D.
9648524-22	CH.	9648524-83	F.B.NL.D.	9648525-32	F.I.E.P.		
9648524-32	F.I.E.P.	9648524-84	DK.S.	9648525-33	DK.S.SF.		
9648524-33	DK.S.SF.	9648525-22	CH.	9648525-82	N.A.		

WHERE NO APPLICATION DETAILS ARE SHOWN, PART APPLIES TO ALL COUNTRIES

A Austria; AUS Australia; B Belgium; CND Canada; CH Switzerland; D Germany; DK Denmark; E Spain; EI Eire; F France; GB Great Britain; I Italy; N Norway; NL Netherlands; NZ New Zealand; O/S Overseas; P Portugal; S Sweden; SF Finland; USA America; ZA South Africa