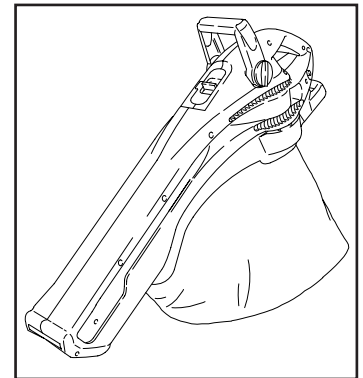
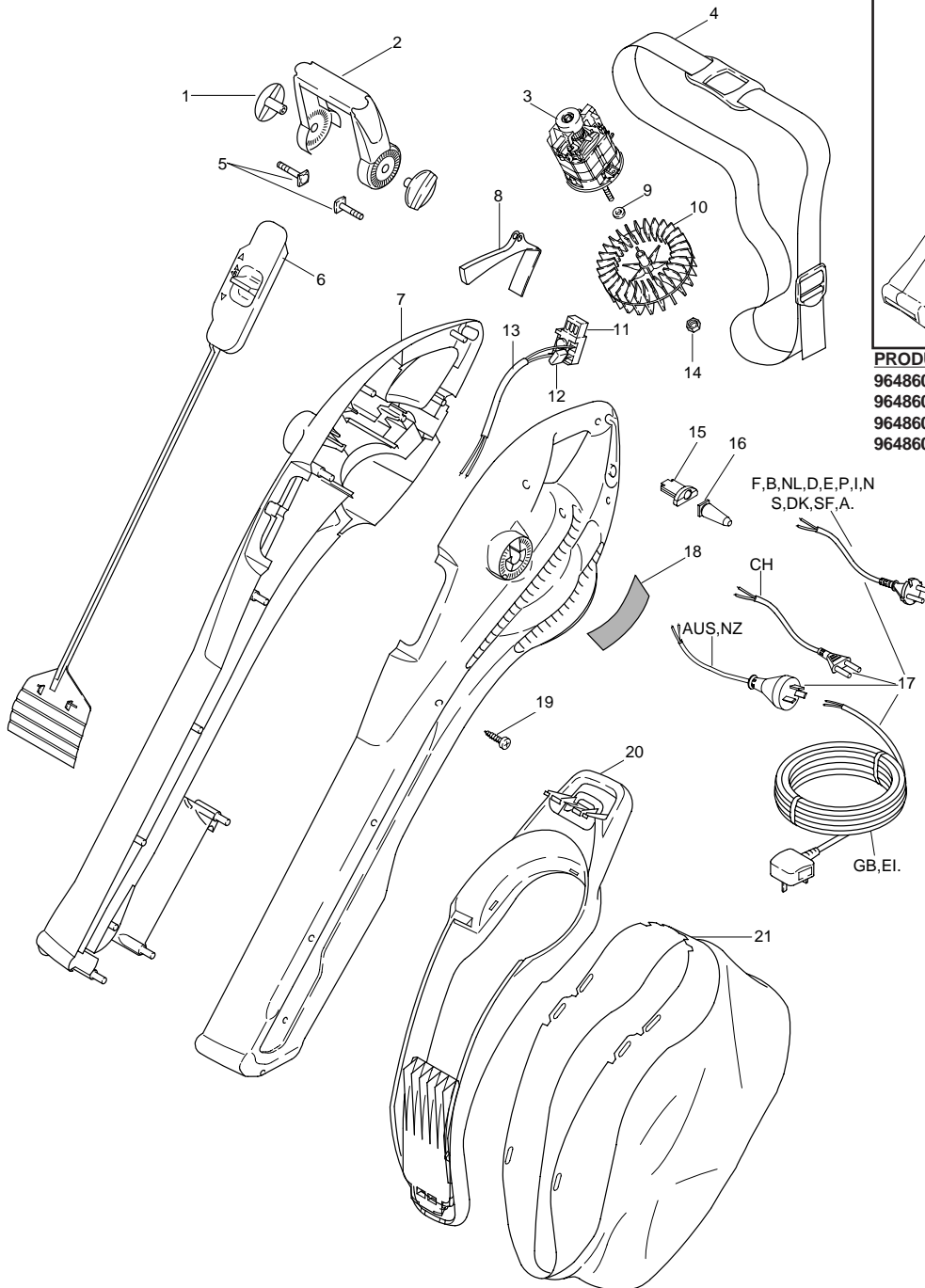




**THIS PARTS LIST REPLACES 5195940-00**

**PARTS LIST**



**PRODUCT APPLICATION**

9648608-01 GB  
 9648608-22 CH  
 9648608-86 F,B,NL,D,E,P,I,N,S,DK,SF,A.  
 9648608-99 AUS,NZ

F,B,NL,D,E,P,I,N  
 S,DK,SF,A.

CH

AUS,NZ

GB,EI.

Key	Part Number	Description	Qty
01	5127577-68/1	WING KNOB	2
02	5118099-68/7	HANDLE	1
03	5150018-00/9	MOTOR	1
04	5149457-00/3	STRAP	1
05	5148859-01/9	BOLT	2
06	5106674-68/1	VALVE MECHANISM	1
07	5149582-01/6	CLAMSHELLS, PAIR	1
08	5127579-68/7	SWITCH ACTUATOR	1
09	5149164-00/5	WASHER	1
10	5118017-67/1	FAN	1
11	5138401-00/4	SWITCH	1 GB,EI.
	5138403-00/0	SWITCH	1 CH,F,B,NL,D,E,P,I,N,S,DK,SF,A.

Key	Part Number	Description	Qty
12	5148397-01/0	CAPACITOR	1
13	5138179-01/4	LEAD	1
14	5149106-00/6	NUT	1
15	5117528-00/9	RETAINER, CABLE	1
16	5149370-00/8	PROTECTION SLEEVE	1
17	5127251-03/0	CABLE, MAINS	1 GB,EI.
	5147000-03/7	CABLE, MAINS	1 CH
	5147000-02/9	CABLE, MAINS	1 F,B,NL,D,E,P,I,N,S,DK,SF,A.
	5138330-00/5	CABLE, MAINS	1 AUS,NZ.
18	5138180-01/2	LABEL WARNING	1
19	5146672-00/0	SCREW	12
20	5149532-01/1	BAG FRAME & FLAP	1
21	5106765-00/0	DEBRIS BAG	1