

| PNC | Brand | Model | Market |
|--|--------------|---------------------------------|---------------|
| 9648629-01 9648629-62 | Flymo | Gardenvac 2200 Turbo | UK,EU |
| 9648630-22 9648630-62 9648630-99 | Flymo | Gardenvac 2200 Turbo + Wheel | CH,EU,Aus |

| | | |
|------------------------|------------------|--|
| | Blower, Electric | |
| Publication Number | | |
| P0208004 2002/09/03 | | |

brand **Flymo**

date **03.09.2002** Sheet **1/2**

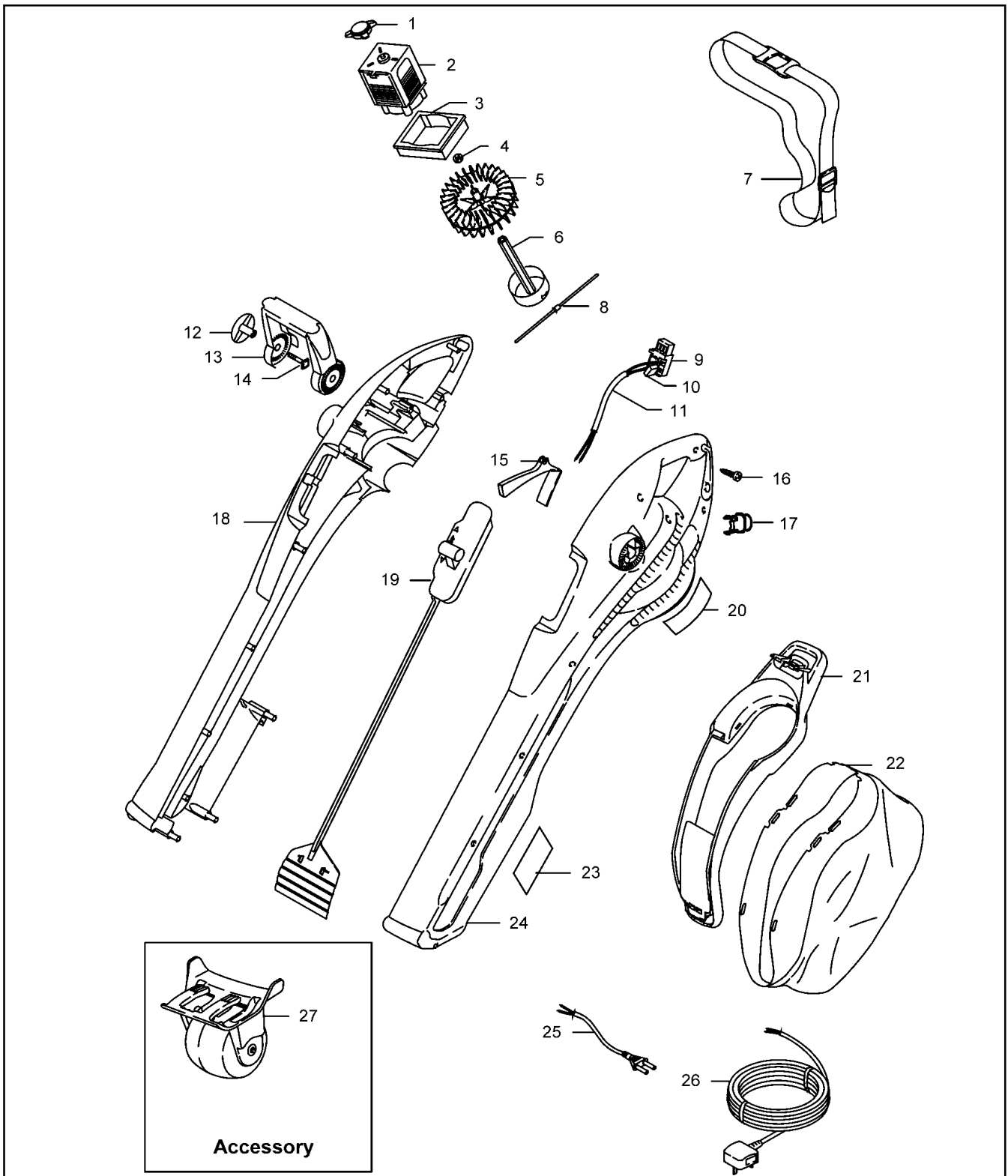
Publication No. **P0208004**

Model

| |
|------------------------------|
| Gardenvac 2200 Turbo |
| Gardenvac 2200 Turbo + Wheel |
| Gardenvac 2200 Turbo + Wheel |

Product Number

| |
|-----------------------------------|
| 9648629-01 (UK) 9648629-62 (Euro) |
| 9648630-22 (CH) 9648630-62 (Euro) |
| 9648630-99 (Aus) |



| | |
|-------|-------|
| brand | Flymo |
|-------|-------|

| | | |
|------|------------|-----------|
| date | 03.09.2002 | Sheet 2/2 |
|------|------------|-----------|

| |
|-------------------------------|
| Gardenvac 2200 Turbo (+wheel) |
|-------------------------------|

| pos | Part No | Description | Qty | pos | Part No | Description | Qty |
|-----|--|-----------------|-----|-----|---------|-------------|-----|
| 1 | 5138591-00/2 | Bush | 1 | | | | |
| 2 | 5117899-48/3 | Motor | 1 | | | | |
| 3 | 5138592-00/0 | Suspension ring | 1 | | | | |
| 4 | 5149164-00/5 | Washer | 1 | | | | |
| 5 | 5118377-60/4 | Fan | 1 | | | | |
| 6 | 5119308-68/1 | Cutting Head | 1 | | | | |
| 7 | 5139366-00/8 | Strap | 1 | | | | |
| 8 | 5138593-80/0 | Shredding Line | 1 | | | | |
| | | Pre Pack x5 | | | | | |
| 9 | 5138609-00/2 | Switch | 1 | | | | |
| 10 | 5149866-00/5 | Capacitor | 1 | | | | |
| 11 | 5138604-01/1 | Internal Lead | 1 | | | | |
| | | Assembly | | | | | |
| 12 | 5127577-68/1 | Wing Knob | 2 | | | | |
| 13 | 5118099-68/7 | Front Handle | 1 | | | | |
| 14 | 5148859-01/9 | Bolt | 2 | | | | |
| 15 | 5128037-68/5 | Switch Actuator | 1 | | | | |
| 16 | 5146672-00/0 | Screw | 12 | | | | |
| 17 | 5127732-68/2 | Cord Anchor | 1 | | | | |
| 18 | 5149841-04/0 | Clamshell Kit | 1 | | | | |
| 19 | 5106849-68/9 | Valve Mechanism | 1 | | | | |
| 20 | 5138370-00/1 | Warning Label | 1 | | | | |
| 21 | 5130587-68/5 | Bag Frame | 1 | | | | |
| | | Assembly | | | | | |
| 22 | 5106848-00/4 | Debris Bag | 1 | | | | |
| 23 | 5130942-00/5 | Model Label | 1 | | | | |
| 24 | 5149841-04/0 | Clamshell Kit | 1 | | | | |
| 25 | CH 5147000-03/7 | Lead | 1 | | | | |
| | EU 5147000-40/9 | Lead | 1 | | | | |
| | Aus 5138330-00/5 | Lead | 1 | | | | |
| 26 | UK 5127251-10/5 | Mains Lead | 1 | | | | |
| 27 | 5118400-00/0 | Wheel Assembly | 1 | | | | |
| | (Supplied with 9648630-22, 9648630-62 9648630-99) | | | | | | |