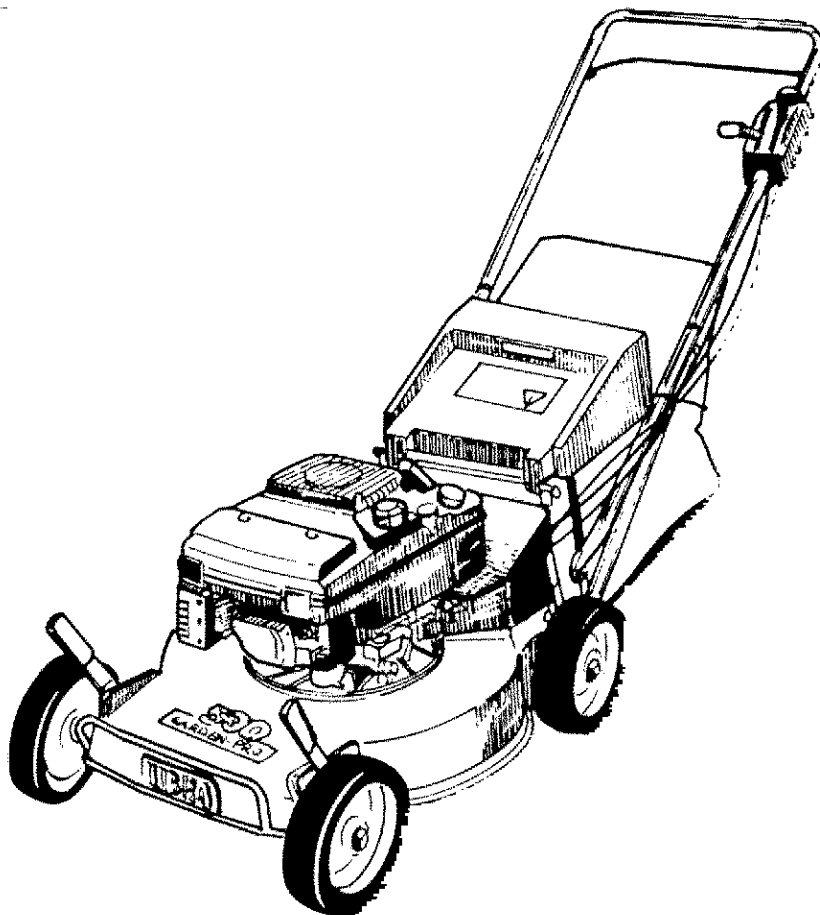


IBEA

Modello n. Serie: dal n.
5320 1001

Stampato n. P5090121

LISTA RICAMBI
SPARE PART LIST
ERSATZTEILLISTE
LISTE DES PIECES DE RECHANGE



530 GARDEN PRO 3M

REF. N°	PART. N°	QTY	DESCRIZIONE	DESCRIPTION	DESCRIPTION	BESCHREIBUNG
1	P5140202	1	DECALCO	DECAL	MARQUAGE	AUFKLEBER
2	P5140186	1	DECALCO	DECAL	MARQUAGE	AUFKLEBER
3	P5140503	1	DECALCO	DECAL	MARQUAGE	AUFKLEBER
4	P5140204	1	DECALCO	DECAL	MARQUAGE	AUFKLEBER
5	P5140203	1	DECALCO	DECAL	MARQUAGE	AUFKLEBER
*	P5110016	1	CHIAVE	KEY	CLEF	SCHLUESSEL
*	P5110008	1	CHIAVE TUBO	KEY	CLEF	SCHLUESSEL
*	P5090102	1	MANUALE	OPERATOR'S MANUAL	MODE D'EMPLOI	BEDIENUNGSANLEITUNG



3 Vor Arbeiten am
Schneidwerkzeug
Zündkerzenstecker
abnehmen.

**WARNING
DANGER!**

Blade rotates when engine is running. Only use the mower with grass catcher in place or with safety chute door closed. Disconnect high tension wire from spark plug before performing any repairs or maintenance to the machine.

**ATTENZIONE
PERICOLO**

La lama gira quando il motore è in moto. Usare il foderabosca soltanto con il sacco di raccolta montato oppure con il portello di sicurezza chiuso. Prima di ogni riparazione o manutenzione staccare il cavo di accensione dalla candela.

**ATTENTION
DANGER!**

La lame gira quand le moteur est en marche. Utilisez la tondeuse qu'avec le collecteur l'herbe montée ou avec le clapet de protection fermé avant de faire une réparation ou des travaux de service à la tondeuse. Il faut absolument séparer le câble d'allumage de la bougie.



IBEA S.p.A.

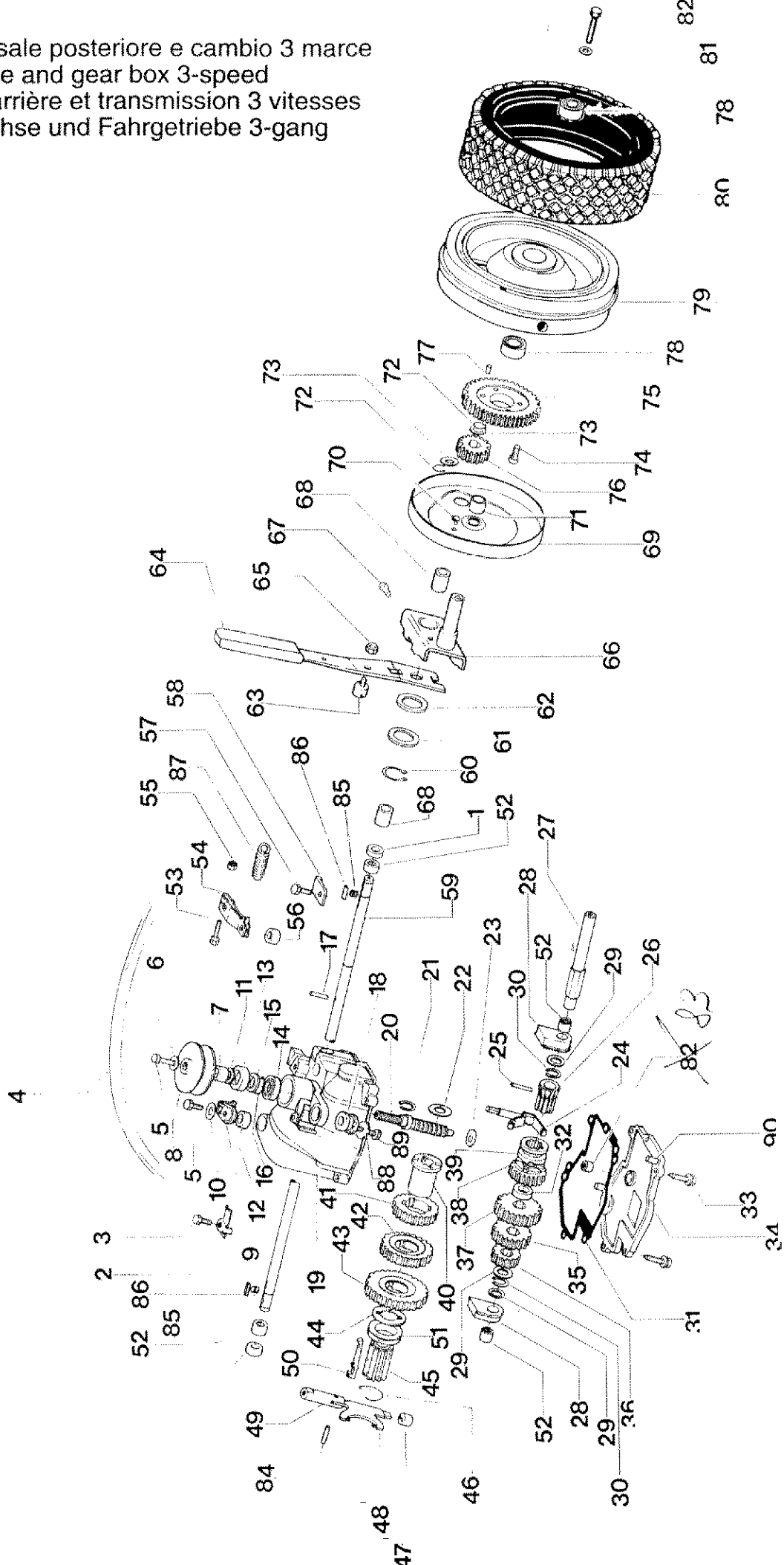
Via De Gasperi, 5 - 22070 LUISAGO (CO)

Tel.: 031/92.91.50 - Telex: 380870

Telefax: 031/92.94.07-88.99.85

REF. N°	PART. N°	QTY	DESCRIZIONE	DESCRIPTION	DESCRIPTION	BESCHREIBUNG
1	P2020187	1	SCIVOLO ERBA	CHUTE DOOR	DÉFLECTEUR	LEITBLECH
2	P00011098	1	TELAIO CESTELLO	BAG FRAME	MONTURE	GESTELL
3	P2020149	1	DEFLETTORE	GRASS DEFLECTOR	DÉFLECTEUR	SCHUTZ
4	P3160043	1	SACCO	GRASS BAG	SAC DE RAMASSAGE	GRASFANGSACK
5	P1050011	6	DADO	NUT	ECROU	MUTTER
6	P02070652	1	TUBO	TUBE	TUBE	ROHR
7	P2020142	2	TAPPO	PLUG	BOUCHON	PFROFFEN
8	P02070252	2	STEGOLA INF.	LOWER HANDLEBAR	GUIDON INFÉRIEUR	HOLMUNTERTEIL
9	P1010120	2	VITE	SCREW	VIS	SCHRAUBE
10	P3040145	2	DISTANZIALE	SPACER	DOUILLE	SCHIBE
11		1	MOTORE	ENGINE	MOTEUR	MOTOR
12	P02070752	1	TUBO	TUBE	TUBE	ROHR
13	P314023F	2	DISTANZIALE	SPACER	DOUILLE	ABSTANDSSTUECK
14	P3020027	2	MOLLA PORTELLO	SPRING	RESSORT	FEDER
15	P2020203	2	TUBO	STRIP	JOINT	DICHTUNG
16	P2020189	1	PORTELLO	SHIELD	PROTECTION	KLAPPE
17	P4010180ZT	1	PROTEZIONE	SHIELD	PROTECTION	SCHUTZ
18	P1020090	8	RIVETTO	RIVET	RIVET	NIET
19	P1010119	2	VITE	SCREW	VIS	SCHRAUBE
20	1020009A1	2	RONDELLA	WASHER	RONDELLE	SCHIBE
21	P2020146	2	COPERTONE	TYRE	PNEU	REIFEN
22	P01015152	2	RUOTA ANTERIORE	FRONT WHEEL	ROUE ANT.	RAD
23	P3030018	4	CUSCINETTO	BEARING	PALIER	LAGER
24	P1010123	2	VITE	SCREW	VIS	SCHRAUBE
25	P3040118	2	BUSSOLA	BUSHING	DOUILLE	BUECHSE
26	P4020030	2	PORTA RUOTA ANT.	FRONT WHEEL SUPPORT	SUPPORT ROUE ANT.	RADHALTER
27	P00046252	3	LEVA ANT. SX	LEFT WHEEL LEVER	LEVIER ROUE GAUCHE	RADHEBEL L.
28	P1010125	3	VITE	SCREW	VIS	SCHRAUBE
29	P1010085	1	VITE	SCREW	VIS	SCHRAUBE
30	5040001A1	1	FASCETTA	CLAMP	CLAMP	RAPBAND
31	P2020087	1	COLLARE	RING	BAGUE	RING
32	P01032452	2	PIASTRA	PLATE	PLAQUE	PLATTE
33	P1010064	1	PRIGIONIERO	SCREW	VIS	SCHRAUBE
34	P1010070	2	VITE	SCREW	VIS	SCHRAUBE
35	P1010082	2	VITE	SCREW	VIS	SCHRAUBE
36	P2020188	1	COPRICINGHIA	BELT COVER	PROTECTION	KEILRIEMEN
37	P1060004	2	FISSATORE	WASHER	RONDELLE	SCHIBE
38	P1080018	2	PERNO	PIN	GOUPILLE	STIFT
39	P000050101	1	SCOCCA	MOWERDECK	CHASSIS	GEHAEUSE
40	P01032552	1	PIASTRA	PLATE	PLAQUE	PLATTE
41	P3040199	2	PIOLINO	PIN	GOUPILLE	STIFT
42	P00046452	1	LEVA ANT. DX	RIGHT WHEEL LEVER	LEVIER ROUE DROITE	RADHEBEL R.
43	1050002A1	2	DADO	NUT	ECROU	MUTTER
44	P01032298	1	TRAVERSINO	BRACE	REINFORCEMENT	VERSTEIFUNG
45	1010025A1	4	VITE	SCREW	VIS	SCHRAUBE
46	P1020077	12	RIVETTO	RIVET	RIVET	NIET
47	P3040133	8	BUSSOLA	BUSHING	DOUILLE	BUECHSE
48	P3040220	4	DISTANZIALE	SPACER	DOUILLE	DISTANZBUECHSE
49	P02070852	1	PARAURTI	BUMPER	PARE-CHOC	STOSSSTANGE
50	P1050012	2	DADO	NUT	ECROU	MUTTER
51	P3040126	1	BRONZINA	BUSHING	DOUILLE	BUECHSE
52	P4010164ZN	1	FLANGIA GUIDA	SHAFT FLANGE	JOINT DE TRANSMISSION	FLANSCHWELLE
53	P1010116	3	VITE	SCREW	VIS	SCHRAUBE
54	P1010169	1	VITE	SCREW	VIS	SCHRAUBE
55	P1020067	4	RONDELLA	WASHER	RONDELLE	SCHIBE
56	1090001A1	1	CHIAVE	KEY	CLAVETTE	SCHIBENFEDER
57	P3040119	2	BUSSOLA	BUSHING	DOUILLE	BUECHSE
58	P1020095ZT	4	RONDELLA	WASHER	RONDELLE	SCHIBE
59	P1010018	6	VITE	SCREW	VIS	SCHRAUBE
60	P01082352	1	RINFORZO INTERNO	REINFORCEMENT	RENFORT	VERSTAERKUNG
61	P01082252	2	RINFORZO LATERALE	REINFORCEMENT	RENFORT	VERSTAERKUNG
62	P1130003	1	GRANO	DOWEL	CHEVILLE	DUEBEL
63	P1070012	1	SEEGER	CIRCLIP	SEEGER	SEEGER
64	P1020087	2	MOLLA	SPRING	RESSORT	FEDER
65	P1080017	2	SPINA	PIN	GOUPILLE	STIFT
66	P3170016	2	FERODO	WASHER	RONDELLE	SCHIBE
67	P3040243	1	RONDELLA	WASHER	RONDELLE	SCHIBE
68	P1010159	1	VITE LAMA	BLADE SCREW	VIS DE COUTEAU	MESSERSCHRAUBE
69	P1020067	1	RONDELLA	WASHER	RONDELLE	SCHIBE
70	P4050030	1	LAMA	BLADE	COUTEAU	MESSER
71	P3040242	1	BUSSOLA LAMA	BLADE BUSHING	DOUILLE DE COUTEAU	MESSERBUECHSE
72	P4010162	1	RONDELLA	WASHER	RONDELLE	SCHIBE
73	P4010163	1	RASAMENTO SAGOMATC	SPACER	DOUILLE	SCHIBE
74	P3040240	1	PULEGGIA	PULLEY	POULIE	RIEMENSCHIBE
75	P1060005	1	FISSATORE	WASHER	RONDELLE	SCHIBE
76	P00015652	2	RUOTA ANT.	FRONT WHEEL ASS. Y	ROUE ANT. COMPL.	RAD KOMP.
*	P000100101	1	CESTELLO COMPLETO	GRASS BAG ASS. Y	SAC DE RAMASSAGE COMF	GRASFANGSACK KOMP.

Vista assale posteriore e cambio 3 marce
Rear axle and gear box 3-speed
Essieu arrière et transmission 3 vitesses
Hinterachse und Fahrgetriebe 3-gang



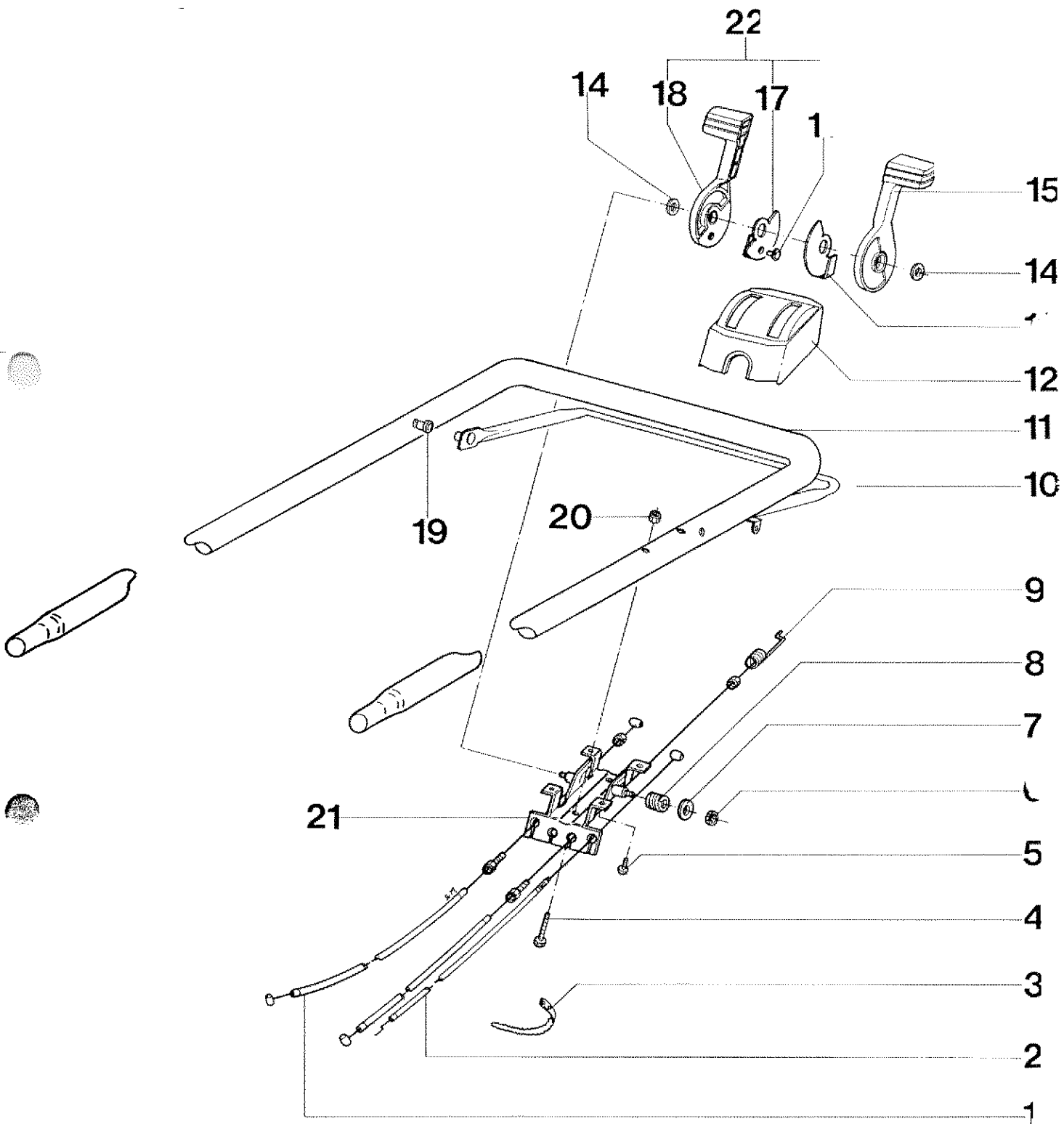
REF. N°	PART. N°	QTY	DESCRIZIONE	DESCRIPTION	DESCRIPTION	BESCHREIBUNG
1	P3170011	2	ANELLO DI TENUTA	OIL SEAL	JOINT D'ARBRE	WELLENDICHRING
2	P4010124	1	COPERCHIO	COVER	COUVERCLE	FEDERHALTER
3	1010018A1	1	VITE	SCREW	VIS	SCHRAUBE
4	P3010020	1	CINGHIA	TRANSMISSION BELT	COURROIRE DE TRANS.	RIEMEN
5	1010018A1	2	VITE	SCREW	VIS	SCHRAUBE
6	1020007A1	1	RONDELLA	WASHER	RONDELLE	SCHIBE
7	P3040049	1	BUSSOLA	BUSHING	DOUILLE	BUECHSE
8	P3040244	1	PULEGGIA	PULLEY	POULIE	RIEMENSCHIBE
9	P2020162	1	LEVA	LEVER	LEVIER	HEBEL
10	1020007A1	1	RONDELLA	WASHER	RONDELLE	SCHIBE
11	P3170013	1	O-RING	SPACER	DOUILLE	ABSTANDSSTUECK
12	P3170011	1	ANELLO DI TENUTA	OIL SEAL	JOINT D'ARBRE	WELLENDICHRING
13	P3170010	1	ANELLO DI TENUTA	OIL SEAL	JOINT D'ARBRE	WELLENDICHRING
14	P3030010	1	CUSCINETTO	BEARING	PALIER	LAGER
15	P1020079	1	RASAMENTO	SPACER	DOUILLE	ABSTANDSSTUECK
16	P1070004	1	SEEGER	CIRCLIP	SEEGER	SEEGER
17	P1080015	1	SPINA	PIN	GOUPILLE	STIFT
18	P2040010	1	GOMMINO	RUBBER TUBE	TUBE DE PROTECTION	SCHUTZHUELLE
19	P00039320	1	SCATOLA CAMBIO	GEAR BOX	BOITE DE VITESSE	GETRIEBE
20	P3040207	1	VITE	SCREW	VIS	SCHRAUBE
21	1070001A1	1	SEEGER	CIRCLIP	SEEGER	SEEGER
22	P1020079	1	RASAMENTO	SPACER	DOUILLE	ABSTANDSSTUECK
23	P1020053	1	RONDELLA	SPACER	DOUILLE	ABSTANDSSTUECK
24	P3040041	1	FORCELLA	FORK	FOURCHE	GABEL
25	P1080013	1	SPINA	PIN	GOUPILLE	STIFT
26	P00065452	1	BUSSOLA	BUSHING	DOUILLE	BUECHSE
27	P3040205	1	ALBERO	SHAFT	ARBRE	WELLE
28	P3050037	2	SUPPORTO	SUPPORT	SUPPORT	HALTER
29	1020020A1	2	RONDELLA	WASHER	RONDELLE	SCHIBE
30	1070001A1	2	SEEGER	CIRCLIP	SEEGER	SEEGER
31	P3170015	1	GUARNIZIONE	GASKET	JOINT	DICHTUNG
32	P3040206	1	DISTANZIALE	SPACER	DOUILLE	DISTANZBUECHSE
33	P1010155	6	VITE	SCREW	VIS	SCHRAUBE
34	P00039520	1	COPERCHIO	COVER	PROTECTION	ABDEKUNG
35	P3050041	1	INGRANAGGIO	GEAR	ENGRANAGE	STIRNRAD
36	P3050040	1	INGRANAGGIO	GEAR	ENGRANAGE	STIRNRAD
37	P3050042	1	INGRANAGGIO	GEAR	ENGRANAGE	STIRNRAD
38	P00038119	1	RUOTA DENT.	GEAR	ENGRANAGE	STIRNRAD
39	P00037952	1	INNESTO DESTRO	SELECTOR COLLAR	MANCHON	SCHALTBUECHSE
40	P3050038	1	BUSSOLA	BUSHING	DOUILLE	BUECHSE
41	P3050045	1	INGRANAGGIO	GEAR	ENGRANAGE	STIRNRAD
42	P3050044	1	INGRANAGGIO	GEAR	ENGRANAGE	STIRNRAD
43	P3050043	1	INGRANAGGIO	GEAR	ENGRANAGE	STIRNRAD
44	P4010121	1	DISCHETTO TEMPIRATO	TEMPERED RING	BAGUE EN ACIER	RING GEHAERTET
45	P2020161	1	BUSSOLA	BUSHING	DOUILLE	BUECHSE
46	P3020024	1	ANELLO	CIRCLIP	SEEGER	SEEGER
47	P3050046	1	GUIDA LEVA INF.	LOWER LEVER GUIDE	GUIDE INF. DE LEVIER	UNTERE FUEHRUNG
48	P4010122	1	LEVA SPING LINGUET.	THRUST LEVER	LEVIER DE BUTÉE	ANLAUFHEBEL
49	P3040216	1	GUIDA LEVA SUP.	UPPER LEVER GUIDE	GUIDE SUP. DE LEVIER	OBERE FUEHRUNG
50	P3050039	1	LINGUETTA SELETRICE	SELECTOR TAB	PATTE DE SELECTEUR	SCHALTFINGER
51	P3040204	1	ANELLO SPINGILINGUETTE	THRUST RING	BAGUE DE BUTÉE	ANLAUFRING
52	P3030020	4	CUSCINETTO	BEARING	PALIER	LAGER
53	P1010157	1	VITE	SCREW	VIS	SCHRAUBE
54	P4010123	1	LEVA DI TRAZIONE	TRACTION LEVER	LEVIER DE TRACTION	ANTRIEBSHEBEL
55	1050002A1	1	DADO	NUT	ECROU	MUTTER
56	P3170012	1	ANELLO DI TENUTA	OIL SEAL	JOINT D'ARBRE	WELLENDICHRING
57	1010018A1	1	VITE	SCREW	VIS	SCHRAUBE
58	P4010125	1	COPERCHIO	COVER	COUVERCLE	DECKEL
59	P3040213	1	ALBERO TRAZIONE	DRIVE SHAFT	ARBRE DE TRACTION	ANTRIEBSWELLE
60	P1070011	2	SEEGER	CIRCLIP	SEEGER	SEEGER
61	P3040121	2	DISTANZIALE	SPACER	DOUILLE	DISTANZBUECHSE
62	P1020057	2	RONDELLA	SPACER	DOUILLE	ABSTANDSSTUECK
63	P3040199	2	PIOLINO	PIN	GOUPILLE	STIFT
64	P00046352	1	LEVA POST. SX	LEFT REAR WHEEL LEVER	LEVIER ROUE POST. GAUCHE	RADHEBEL L.
65	P00046552	1	LEVA POST. DX	RIGHT REAR WHEEL LEVER	LEVIER ROUE POST. DROITE	RADHEBEL R.
66	1050002A1	2	DADO	NUT	ECROU	MUTTER
67	P4020122	2	PORTA RUOTA POST.	REAR WHEEL SUPPORT	SUPPORT ROUE POST.	RADHALTER
68	P1010143	2	INGRASSATORE	LUBRIFIER	GRAISSEUR	SCHMIERER
69	3030003A1	4	CUSCINETTO	BEARING	PALIER	LAGER
70	P01084952	2	COPRIRUOTA	WHEEL COVER	PROTECTION DE ROUE	RADABDECKUNG
71	P1020086	2	RIVETTO	RIVET	RIVET	NIET
72	P3040120	2	DISTANZIALE	SPACER	DOUILLE	DISTANZBUECHSE
73	1070001A1	4	SEEGER	CIRCLIP	SEEGER	SEEGER
74	1020020A1	4	RONDELLA	WASHER	RONDELLE	SCHIBE
75	P1010121	4	VITE	SCREW	VIS	SCHRAUBE
76	P3050033	2	RUOTA DENTATA	WORM GEAR	COURONNE	KRONRAD
77	P3050034	2	PIGNONE	PINION	PINION	RITZEL
78	P1080010	4	SPINA	PIN	GOUPILLE	STIFT
79	P3030018	4	CUSCINETTO	BEARING	PALIER	LAGER
80	P01015252	2	RUOTA POST.	REAR WHEEL	ROUE POST.	HINTERRAD
81	P2020146	2	COPERTONE	TYRE	PNEU	REIFEN
82	1020009A1	2	RONDELLA	WASHER	RONDELLE	SCHIBE
83	P1010119	2	VITE	SCREW	VIS	SCHRAUBE
84	P3030019	1	CUSCINETTO	BEARING	PALIER	LAGER
85	P1080016	1	SPINA	PIN	GOUPILLE	STIFT
86	P3020019	2	MOLLA	SPRING	RESSORT	FEDER
87	P1090005	2	CHIAVETTA	KEY	CLAVETTE	SCHIBENFEDER
88	P3020028	1	MOLLA RICHIAMO LEVA	TRACTION SPRING	CLAVETTE	SCHIBENFEDER
89	P1020054	1	RONDELLA	WASHER	RONDELLE	SCHIBE
90	P1010173	1	VITE	SCREW	VIS	SCHRAUBE
91	P1080014	2	SPINA	PIN	GOUPILLE	STIFT
92	P00015752	2	RUOTA POSTERIORE	REAR WHEEL ASS. Y	ROUE POST. COMPL.	HINTERRAD KOMP.
93	P00078720	1	CAMBIO 3 MARCE	GEAR BOX 3-SPEED	TRANSMISSION 3 VITESSES	FAHRGETRIEBE 3-GANG

Vista stegola superiore e comandi

Upper handle and controls

Mancheron partie supérieure et éléments de commande

Lenkeroberteil und Bedienungselemente



REF. N°	PART. N°	QTY	DESCRIZIONE	DESCRIPTION	DESCRIPTION	BESCHREIBUNG
1	P5010037	1	CAVO SELETTORE	SHIFT CABLE	CABLE DE COMMANDE	SCHALKABEL
2	P5020052	1	CAVO ACCELERATORE	THROTTLE CABLE	CABLE DE GAZ	GASKABEL
3	5040001A1	2	FASCETTA	CLAMP	CLAMP	RAPBAND
4	P1010102	2	VITE	SCREW	VIS	SCHRAUBE
5	P1010061	4	VITE	SCREW	VIS	SCHRAUBE
6	1050003A1	2	DADO	NUT	ECROU	MUTTER
7	1020007A1	2	RONDELLA	WASHER	RONDELLE	SCHEIBE
8	P3020026	2	MOLLA	SPRING	RESSORT	FEDER
9	P5010038	1	CAVO TRAZIONE	TRACTION CABLE	CABLE DE TRACTION	ANTRIEBSKABEL
10	P3120071VE	1	MANIGLIA TRAZIONE	TRACTION LEVER	POIGNÉE DE TRACTION	ANTRIEBSHEBEL
11	P3120072VE	1	STEGOLA SUPERIORE	UPPER HANDLE BAR	GUIDON SUPERIEUR	OB. FUEHRUNGSHOLM
12	P2020065	1	SCATOLA COMANDI	CONTROL HOUSING	BOITE DE COMMANDE	STEUERGEHAEUSE
13	P40201472N	1	PIASTRIINA	PLATE	PLAQUE	PLATTE
14	P1020085	2	RASAMENTO	SPACER	DOUILLE	ABSTANDSSTUECK
15	P2020168	1	LEVA NERA ACCELER.	THROTTLE LEVER	LEVIER DE GAZ	GASHEBEL
16	P1020091	1	RIVETTO	RIVET	RIVET	NIET
17	P4020126	1	PIASTRINA	PLATE	PLAQUE	PLATTE
18	P2020167	1	LEVA CAMBIO	SHIFT LEVER	LEVIER DE COMMANDE	SCHALTERHEBEL
19	P3040123	2	BUSSOLA	BUSHING	DOUILLE	BUECHSE
20	1050003A1	2	DADO	NUT	ECROU	MUTTER
21	P4020125	1	PORTA SCAT. COMAN.	CONTROL HOUSING SUP.	SUPPORT BOITE DE COM.	HALTER
22	P00744998	1	LEVA ROSSA CAMBIO COMPL.	SHIFT LEVER COMP.	ENS. LEVIER DE COMMANDE	HEBELSATZT KPL.

Vista generale
Complete machine
Vue d'ensemble
Gesamtansicht

